

LOC/DME H-GU	APP CRS	Rwy Idg	<b>9020</b>
<b>109.15</b>	<b>172°</b>	TDZE	<b>4457</b>
Chan <b>28(Y)</b>		Apt Elev	<b>4457</b>

# ILS or LOC/DME RWY 17

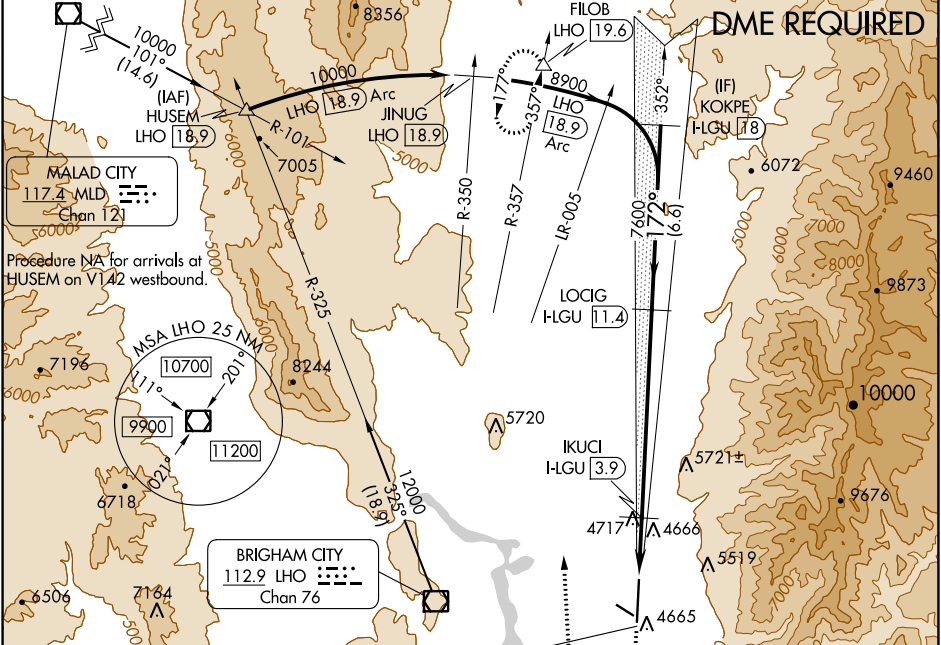
LOGAN-CACHE (L-GU)

**NA** Circling NA east of Rwy 17-35.  
**NA** Circling Rwy 10, 28 NA at night.  
**-15°C** Rwy 17 helicopter visibility reduction below 3/4 SM NA.

**MALSR**  

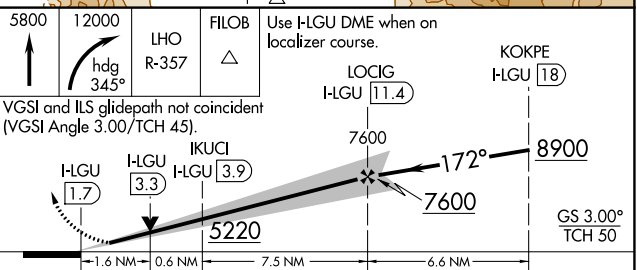
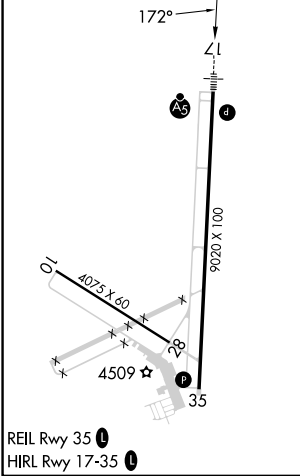

**MISSED APPROACH:** Climb to 5800 then climbing right turn to 12000 on heading 345° and on LHO VOR/DME R-357 to FILOB INT/LHO 19.6 DME and hold, continue climb-in-hold to 12000.

ASOS	SALT LAKE CENTER	UNICOM
<b>135.275</b>	<b>127.7 354.125</b>	<b>122.8 (CTAF)</b>



ELEV 4457	<b>D</b>	TDZE 4457
-----------	----------	-----------

**LOCALIZER, 109.15**  
 H-GU  
 Chan 28(Y)



CATEGORY	A	B	C	D
S-ILS 17	4771-3/4		314 (400-3/4)	
S-LOC 17	5020-3/4	563 (600-3/4)	5020-1/4	563 (600-1/4)
<b>C</b> CIRCLING	5020-1	563 (600-1)	5080-1/4 623 (700-1/4)	5080-2 623 (700-2)

SW-4, 26 DEC 2024 to 23 JAN 2025

SW-4, 26 DEC 2024 to 23 JAN 2025