

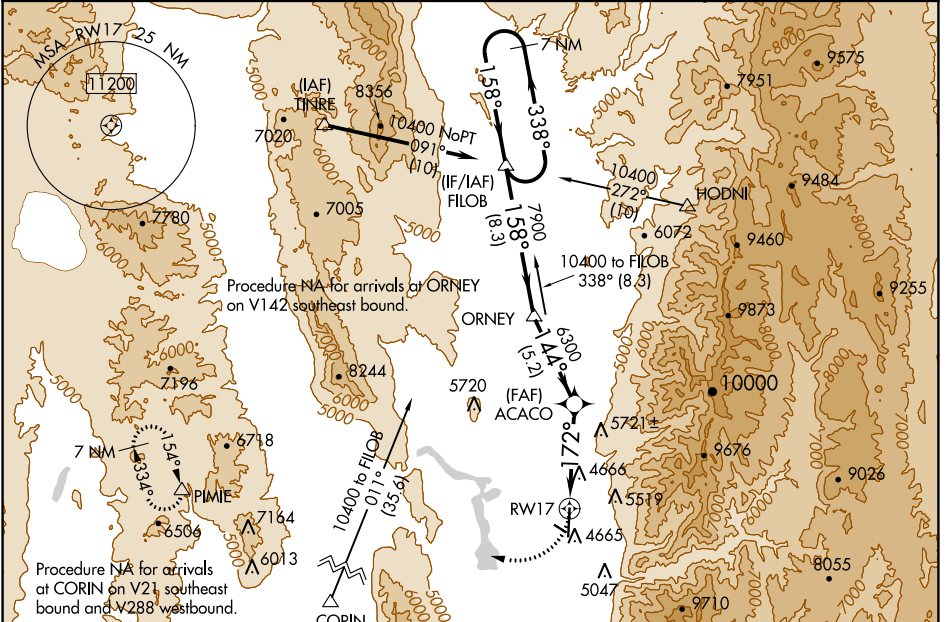
APP CRS	Rwy Idg	9020
172°	TDZE	4457
	Apt Elev	4457

RNAV (GPS) RWY 17

LOGAN-CACHE (LGU)

-15°C 	DME/DME RNP-0.3 NA. Circling NA east of Rwy 17-35. Night Landing: Rwy 10-28 NA. Inop table does not apply to LNAV Cats C/D. *Missed approach requires minimum climb of 310 feet per NM to 7700.	MALS R 	MISSED APPROACH: Climbing right turn to 10000 direct PIMIE and hold, continue climb-in-hold to 10000.
-----------	--	------------	--

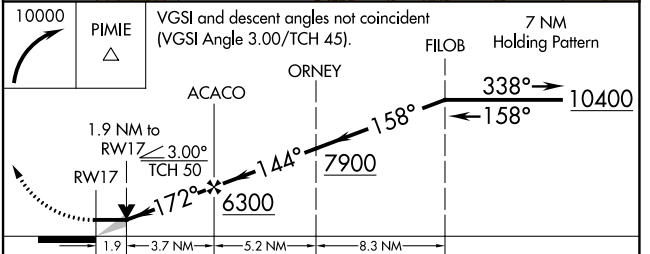
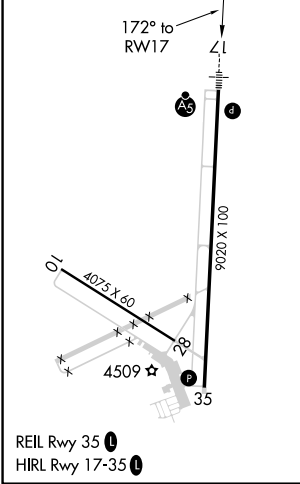
ASOS 135.275	SALT LAKE CENTER 127.7 354.125	UNICOM 122.8 (CTAF)
------------------------	--	-------------------------------



SW-4, 26 DEC 2024 to 23 JAN 2025

SW-4, 26 DEC 2024 to 23 JAN 2025

ELEV	4457	D	TDZE	4457
------	-------------	----------	------	-------------



CATEGORY	A	B	C	D
*LNAV MDA	5100-1/2	643 (700-1/2)	5100-1 3/8	643 (700-1 3/8)
LNAV MDA	5800-3/4 1343 (1400-3/4)	5800-1 1343 (1400-1)	5800-3	1343 (1400-3)
C CIRCLING	5800-1 1/4 1343 (1400-1 1/4)	5800-1 1/2 1343 (1400-1 1/2)	5800-3	1343 (1400-3)