

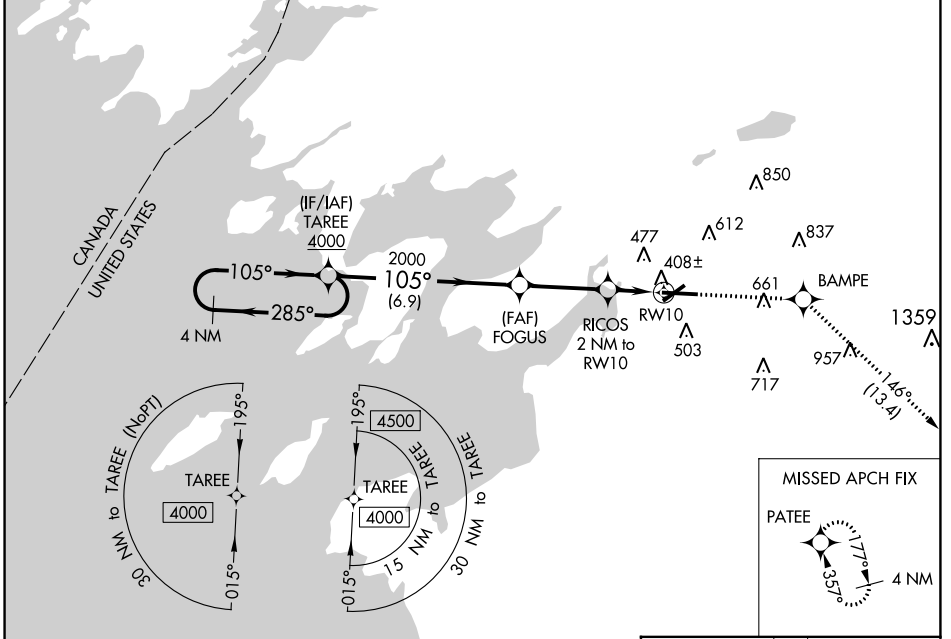
WAAS CH <b>53522</b> <b>W10A</b>	APP CRS <b>105°</b>	Rwy Idg TDZE Apt Elev	<b>7001</b> <b>318</b> <b>331</b>
--	------------------------	-----------------------------	---

# RNAV (GPS) RWY 10

WATERTOWN INTL (ART)

RNP APCH.	MISSED APPROACH: Climb to 3600 direct BAMPE and on track 146° to PATEE and hold.
<p><b>▽</b></p> <p><b>▲</b></p> <p>For uncompensated Baro-VNAV systems, LNAV/VNAV NA below -20°C or above 54°C. Rwy 10 helicopter visibility reduction below ¾ SM NA.</p>	

ASOS <b>132.325</b>	KGTB ATIS <b>119.525</b>	WHEELER-SACK APP CON <b>124.875 307.125</b>	CLNC DEL <b>120.8</b>	UNICOM <b>123.0 (CTAF) 0</b>
------------------------	-----------------------------	--	--------------------------	---------------------------------



NE-2, 26 DEC 2024 to 23 JAN 2025

NE-2, 26 DEC 2024 to 23 JAN 2025

4 NM Holding Pattern		ELEV 331		TDZE 318	
<p>TAREE</p> <p>FOGUS</p> <p>RICOS 2 NM to RW10</p> <p>* 1 NM to RW10</p> <p>RW10</p> <p>* 980</p> <p>* LNAV only.</p>		<p>3600</p> <p>BAMPE</p> <p>tr 146°</p> <p>PATEE</p>			
CATEGORY	A	B	C	D	
LPV DA		568-¾	250 (300-¾)		
LNAV/VNAV DA		578-¾	260 (300-¾)		
LNAV MDA		660-1	342 (400-1)		
CIRCLING	960-1	629 (700-1)	980-1¼ 649 (700-1¼)	1080-2½ 749 (800-2½)	HIRL Rwy 7-25 0 MIRL Rwy 10-28 0