

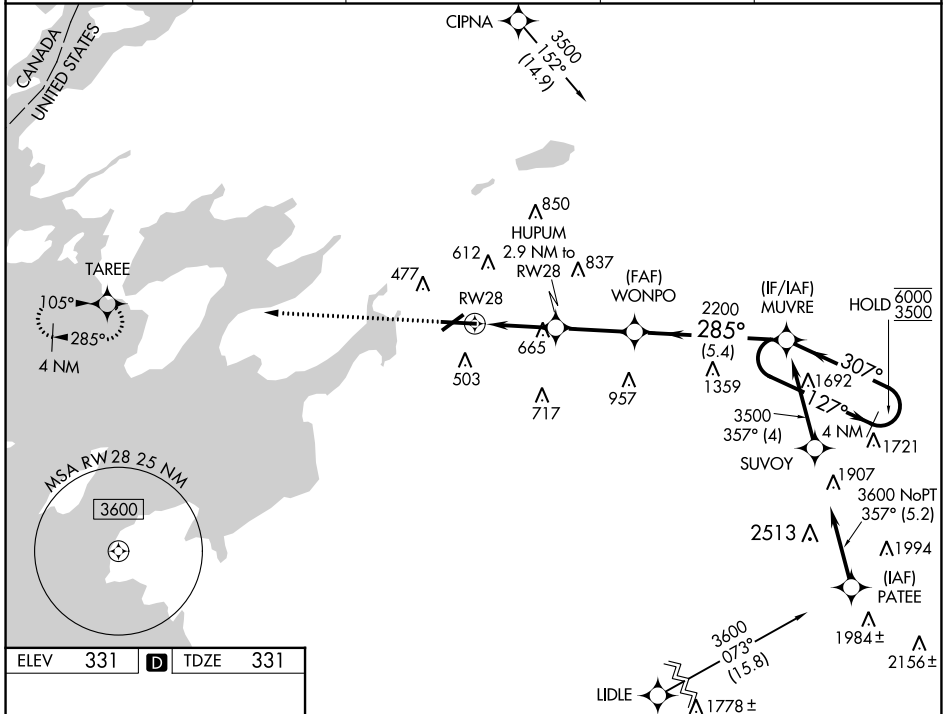
WAAS CH 82322	APP CRS 285°	Rwy Idg TDZE Apt Elev	7001 331 331
-------------------------	------------------------	-----------------------------	---

RNAV (GPS) RWY 28

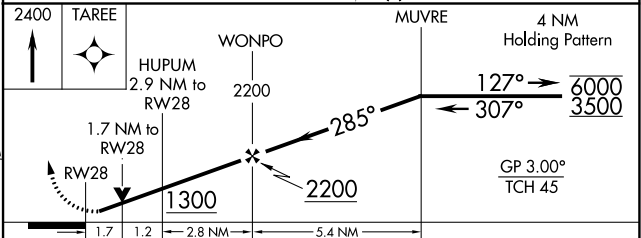
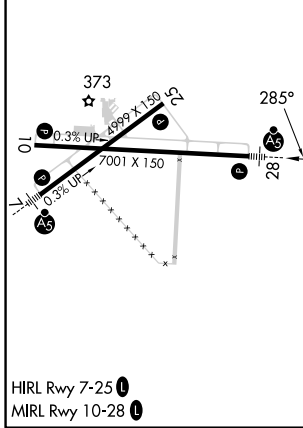
WATERTOWN INTL (ART)

RNP APCH - GPS.			MALSR	MISSED APPROACH: Climb to 2400 direct TAREE and hold.
<p>▼ Rwy 28 helicopter visibility reduction below ¾ SM NA. For uncompensated Baro-VNAV systems, LNAV/VNAV NA below -20°C or above 54°C. For inop ALS, increase LNAV Cats A/B visibility to 1 SM.</p>				

ASOS 132.325	KGTB ATIS 119.525	WHEELER-SACK APP CON 124.875 307.125	CLNC DEL 120.8	UNICOM 123.0 (CTAF)
------------------------	-----------------------------	--	--------------------------	-------------------------------



ELEV 331	D	TDZE 331
----------	----------	----------



CATEGORY	A	B	C	D
LPV DA		531-½	200 (200-½)	
LNAV/VNAV DA		852-1	521 (600-1)	
LNAV MDA	920-¾	589 (600-¾)	920-1¼	589 (600-1¼)
C CIRCLING	920-1 589 (600-1)	960-1 629 (700-1)	980-1¾ 649 (700-1¾)	1080-2½ 749 (800-2½)

NE-2, 26 DEC 2024 to 23 JAN 2025

NE-2, 26 DEC 2024 to 23 JAN 2025