

WAAS CH 93522 W36A	APP CRS 360°	Rwy Idg TDZE Apt Elev	6401 1193 1213
--	------------------------	-----------------------------	---

RNAV (GPS) RWY 36

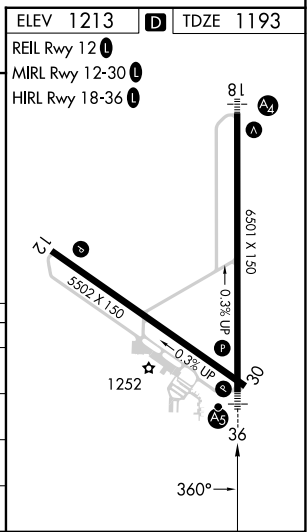
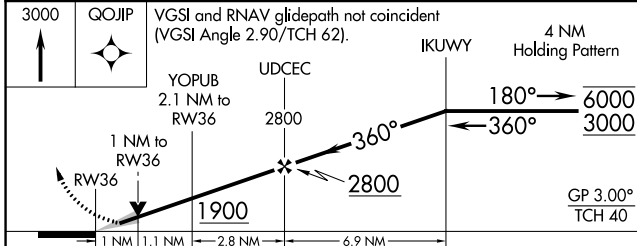
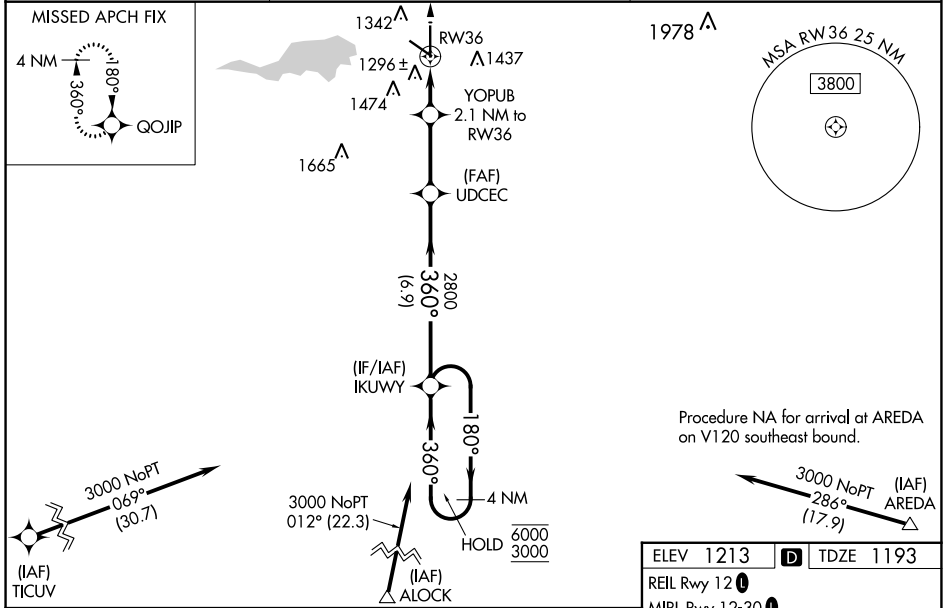
MASON CITY MUNI (MCW)

RNP APCH-GPS.

For uncompensated Baro-VNAV systems, LNAV/VNAV NA below -17°C or above 54°C. Baro-VNAV and VDP NA when using Charles City altimeter setting. For inop ALS, increase LNAV/VNAV visibility to ¾ SM and LNAV Cats C and D to 1 SM. When local altimeter setting not received, use Charles City altimeter setting: increase LPV DA to 1480 feet, LNAV/VNAV DA to 1562 and visibility all Cats ½ SM; increase all MDA 100 feet, LNAV Cats C and D visibility ¾ SM and Circling Cat C ¼ SM. For inop ALS when using Charles City altimeter, increase LPV visibility to ¾ SM, LNAV/VNAV visibility to 1 SM and LNAV Cats C/D to 1 ½ SM.

MALSRL MISSED APPROACH: Climb to 3000 direct QOJIP and hold.

ASOS 120.3	MINNEAPOLIS CENTER 127.3 257.675	UNICOM 123.0 (CTAF) 0
----------------------	--	---------------------------------



CATEGORY	A	B	C	D
LPV DA		1393-½	200 (200-½)	
LNAV/VNAV DA		1475-½	282 (300-½)	
LNAV MDA	1560-½	367 (400-½)	1560-5/8	367 (400-5/8)
CIRCLING	1680-1 467 (500-1)	1760-1 547 (600-1)	1780-1½ 567 (600-1½)	1780-2 567 (600-2)

NC-3, 26 DEC 2024 to 23 JAN 2025

NC-3, 26 DEC 2024 to 23 JAN 2025