

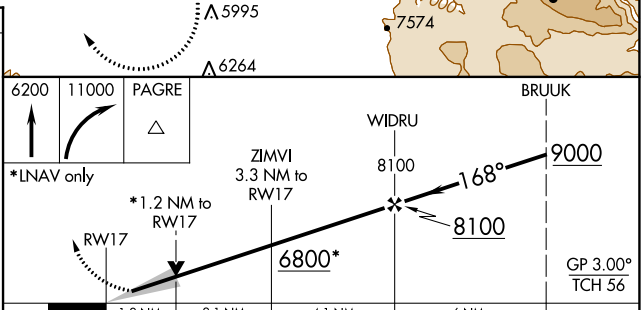
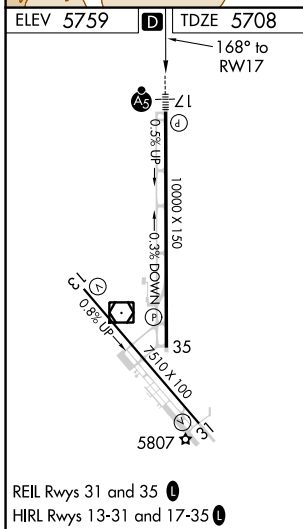
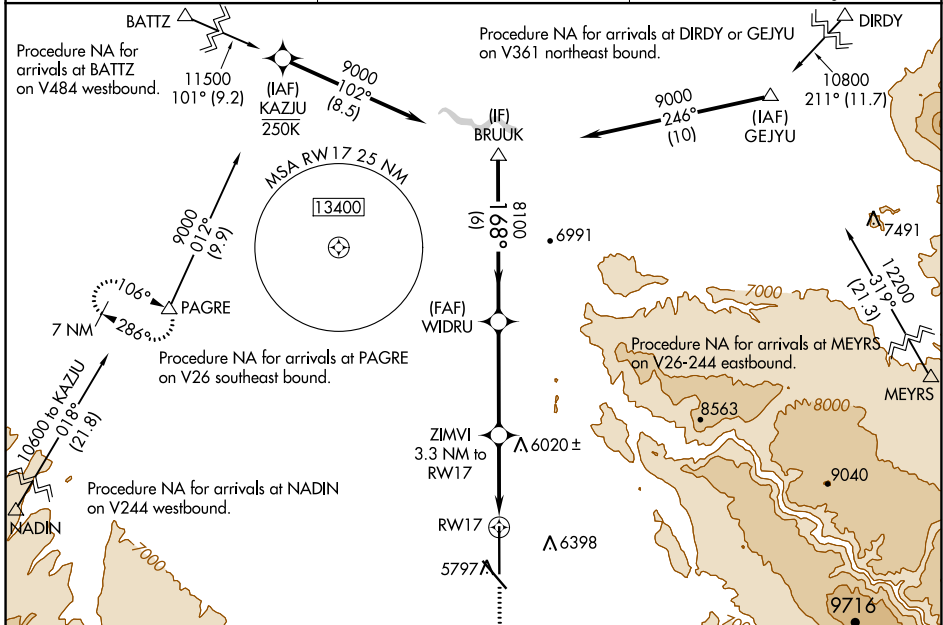
WAAS CH <b>40411</b> <b>W17A</b>	APP CRS <b>168°</b>	Rwy Idg TDZE Apt Elev	<b>10000</b> <b>5708</b> <b>5759</b>
--	------------------------	-----------------------------	--

# RNAV (GPS) RWY 17

MONTROSE RGNL (MTJ)

RNP APCH.	MALSR	MISSED APPROACH: (Do not exceed 250K until PAGRE) Climb to 6200 then climbing right turn to 11000 direct PAGRE and hold, continue climb in hold to 11000.
<p>⚠ Circling NA east of Rwy 17 and northeast of Rwy 31. Circling Rwy 31 NA at night. When Circling to Rwy 13 at night, operational VGSI required, remain on or above VGSI glidepath until threshold. Baro-VNAV NA. For inop ALS, increase LNAV Cat C/D visibility to 1 1/2 SM.</p>		

ASOS <b>135.225</b>	DENVER CENTER <b>127.1 343.65</b>	UNICOM <b>122.8 (CTAF)</b>
------------------------	--------------------------------------	-------------------------------



CATEGORY	A	B	C	D
LPV DA		5908-1/2	200 (200-1/2)	
LNAV/VNAV DA		6131-3/4	423 (400-3/4)	
LNAV MDA	6120-1/2	412 (400-1/2)	6120-3/4	412 (400-3/4)
<b>C</b> CIRCLING	6280-1 521 (600-1)	6320-1 561 (600-1)	6380-1 3/4 621 (700-1 3/4)	6800-3 1041 (1100-3)

SW-1, 26 DEC 2024 to 23 JAN 2025

SW-1, 26 DEC 2024 to 23 JAN 2025