

ATLANTIC CITY, NEW JERSEY

# HI-VOR or TACAN RWY 31

VORTAC ACY <b>117.15</b> Chan <b>118(Y)</b>	APCH CRS <b>302°</b>	Rwy Idg <b>10,000</b> TDZE <b>64</b> Arpt Elev <b>75</b>
---	-------------------------	--

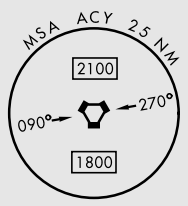
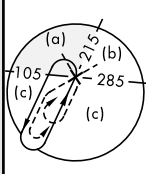
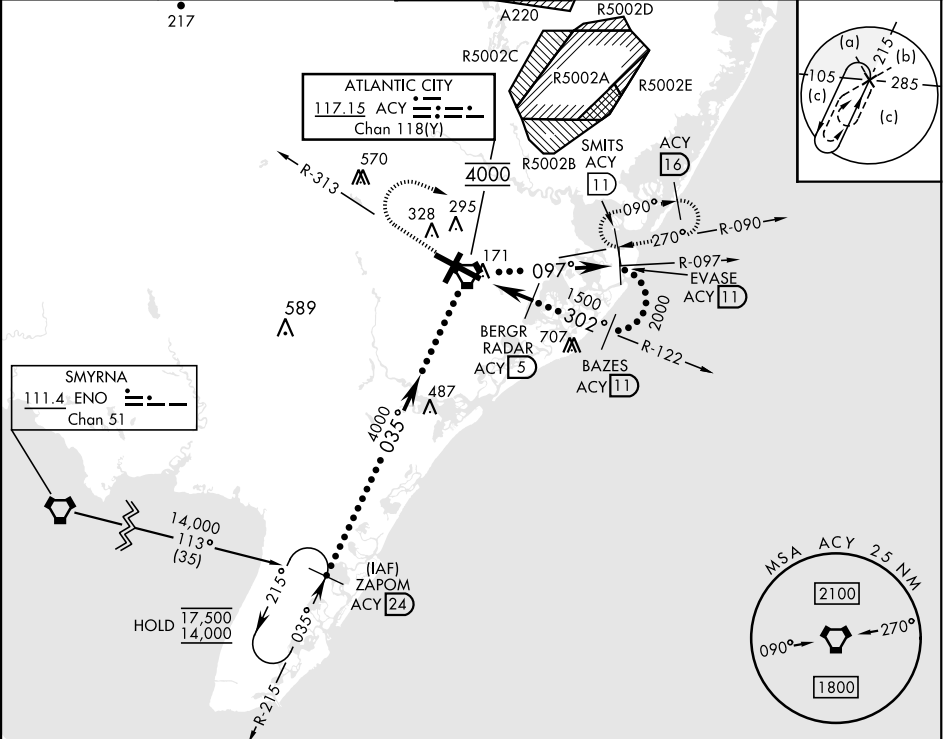
[USAF]

ATLANTIC CITY INTL (KACY)

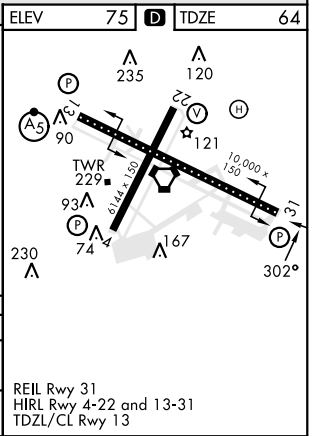
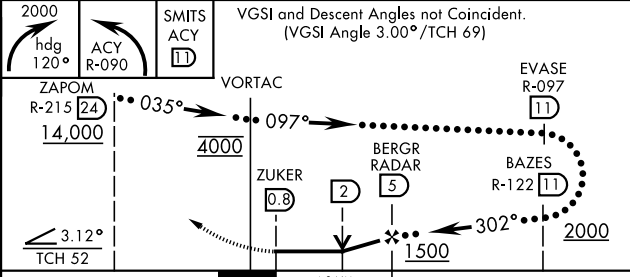
DME or RADAR required

MISSED APPROACH: Climbing right turn to 2000 on heading 120° and on ACY R-090 to SMITS/ACY 11 DME and hold.

ATIS <b>125.725 316.15</b>	APP CON <b>124.6 327.125</b> (130° - 309°) <b>134.25 292.2</b> (310° - 129°)	TOWER <b>120.3 239.0</b>	GND CON <b>121.9 284.6</b>	CLNC DEL <b>127.85 353.775</b>
-------------------------------	--	-----------------------------	-------------------------------	-----------------------------------



ELEV	75	TDZE	64
------	----	------	----



ATLANTIC CITY, NEW JERSEY  
Amdt 4C 25JAN24

39°27'N-74°35'W

ATLANTIC CITY INTL (KACY)

# HI-VOR or TACAN RWY 31

NE-2, 26 DEC 2024 to 23 JAN 2025

NE-2, 26 DEC 2024 to 23 JAN 2025