

# CAMARILLO SIX DEPARTURE

SW-3, 26 DEC 2024 to 23 JAN 2025

### TAKEOFF MINIMUMS

- Rwy 7: 2000-5 or Standard with minimum climb of 320' per NM to 4100.
- Rwy 25: 2100-5 or Standard with a minimum climb of 300' per NM to 4100.

NOTE: Aircraft proceeding on FILLMORE TRANSITION- If not at MCA/MEA prior to reaching FIM VORTAC, continue climbing in depicted holding pattern to MCA or assigned altitude.

NOTE: RADAR required.

### TOP ALTITUDE:

8000

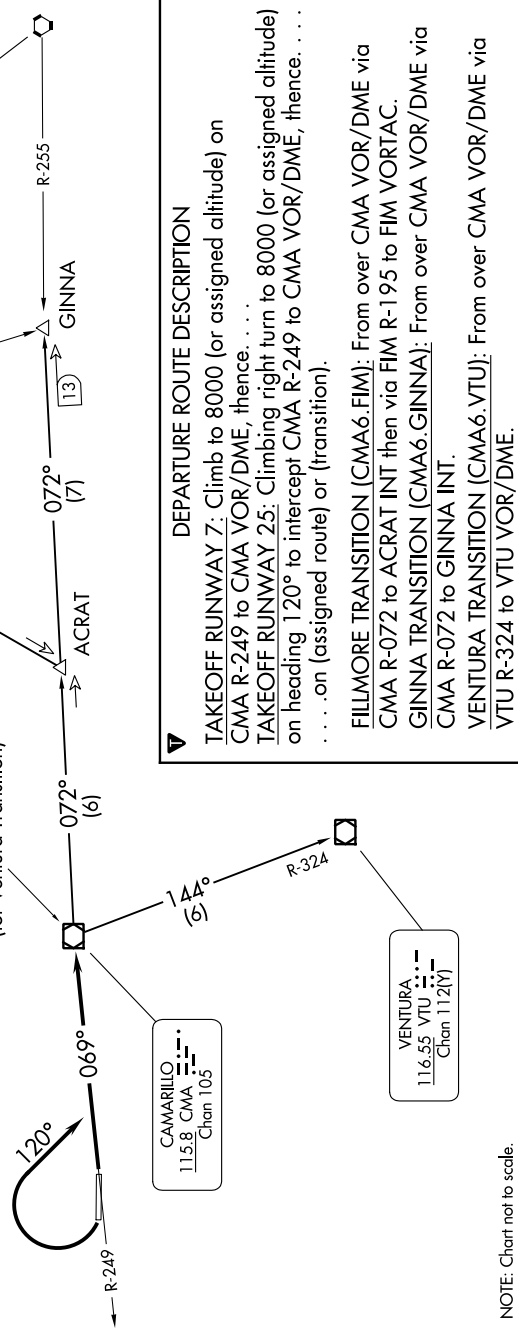
ATIS 118.05  
GND CON 121.9  
OXNARD TOWER ★ 134.95 (CTAF) 257.8  
POINT MUGU DEP CON ★ 124.7 335.5  
LOS ANGELES CENTER 135.5 327.1

VAN NUYS  
113.1 VNY  
Chan 78

FILLMORE  
112.5 FIM  
Chan 72

CAMARILLO  
115.8 CMA  
Chan 105

VENTURA  
116.55 VTU  
Chan 112(Y)



### DEPARTURE ROUTE DESCRIPTION

TAKEOFF RUNWAY 7: Climb to 8000 (or assigned altitude) on CMA R-249 to CMA VOR/DME, thence. . . .

TAKEOFF RUNWAY 25: Climb right turn to 8000 (or assigned altitude) on heading 120° to intercept CMA R-249 to CMA VOR/DME, thence. . . . on (assigned route) or (transition).

FILLMORE TRANSITION (CMA6.FIM): From over CMA VOR/DME via CMA R-072 to ACRA INT then via FIM R-195 to FIM VORTAC.

GINNA TRANSITION (CMA6.GINNA): From over CMA VOR/DME via CMA R-072 to GINNA INT.

VENTURA TRANSITION (CMA6.VTU): From over CMA VOR/DME via VTU R-324 to VTU VOR/DME.

NOTE: Chart not to scale.

SW-3, 26 DEC 2024 to 23 JAN 2025

# CAMARILLO SIX DEPARTURE