

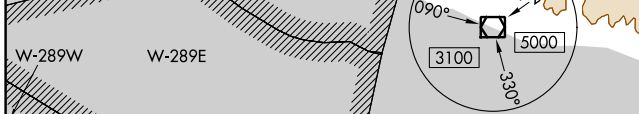
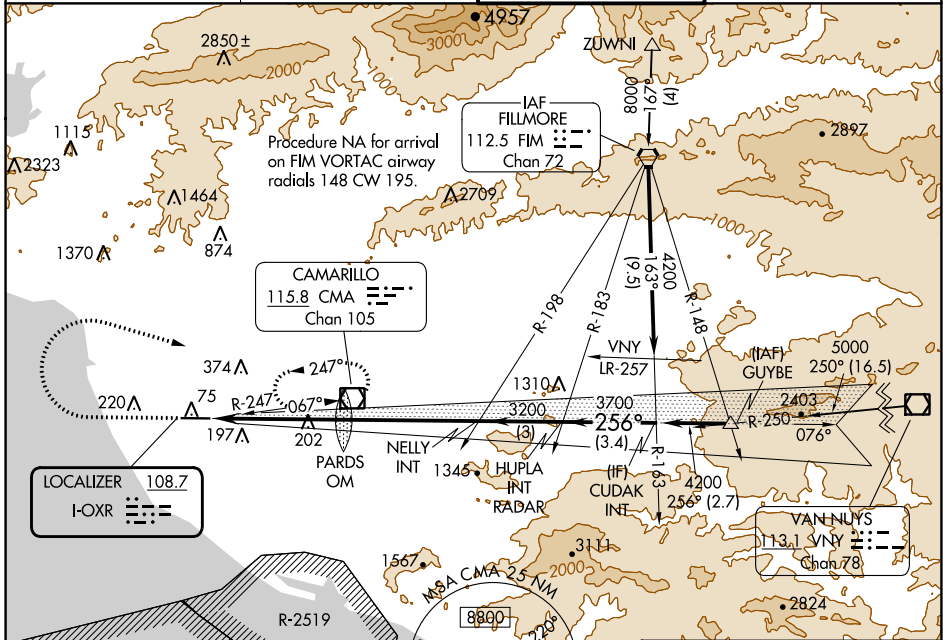
LOC I-OCR 108.7	APP CRS 256°	Rwy ldg TDZE Apt Elev	5500 44 45
---------------------------	------------------------	-----------------------------	---------------------------------------

ILS or LOC RWY 25

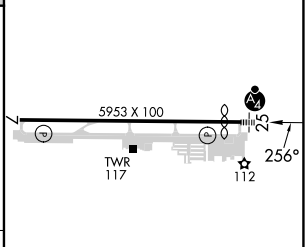
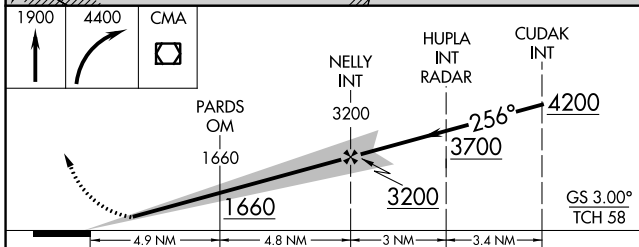
OXNARD (OXR)

<p>⚠ Rwy 25 helicopter visibility reduction below ¼ SM NA. Autopilot coupled approach NA below 1086. Inop table does not apply.</p>	<p>MALSF</p>	<p>MISSED APPROACH: Climb to 1900 then climbing right turn to 4400 direct CMA VOR/DME and hold, continue climb-in-hold to 4400.</p>
--	---------------------	--

<p>ATIS 118.05</p>	<p>POINT MUGU APP CON * 124.7 335.5</p>	<p>OXNARD TOWER * 134.95 (CTAF) 0 257.8</p>	<p>GND CON 121.9</p>
-------------------------------	--	--	---------------------------------



ELEV 45	D TDZE 44
---------	------------------



CATEGORY	A	B	C	D
S-ILS 25		424-1 380 (400-1)		
S-LOC 25		460-1 416 (500-1)		
CIRCLING	500-1 455 (600-1)	520-1 475 (500-1)	700-1¾ 655 (700-1¾)	720-2¼ 675 (700-2¼)

REIL Rwy 7 Ⓛ	
MIRL Rwy 7-25 Ⓛ	
FAF to MAP 9.7 NM	
Knots	60 90 120 150 180
Min:Sec	9:42 6:28 4:51 3:53 3:14

SW-3, 26 DEC 2024 to 23 JAN 2025

SW-3, 26 DEC 2024 to 23 JAN 2025