

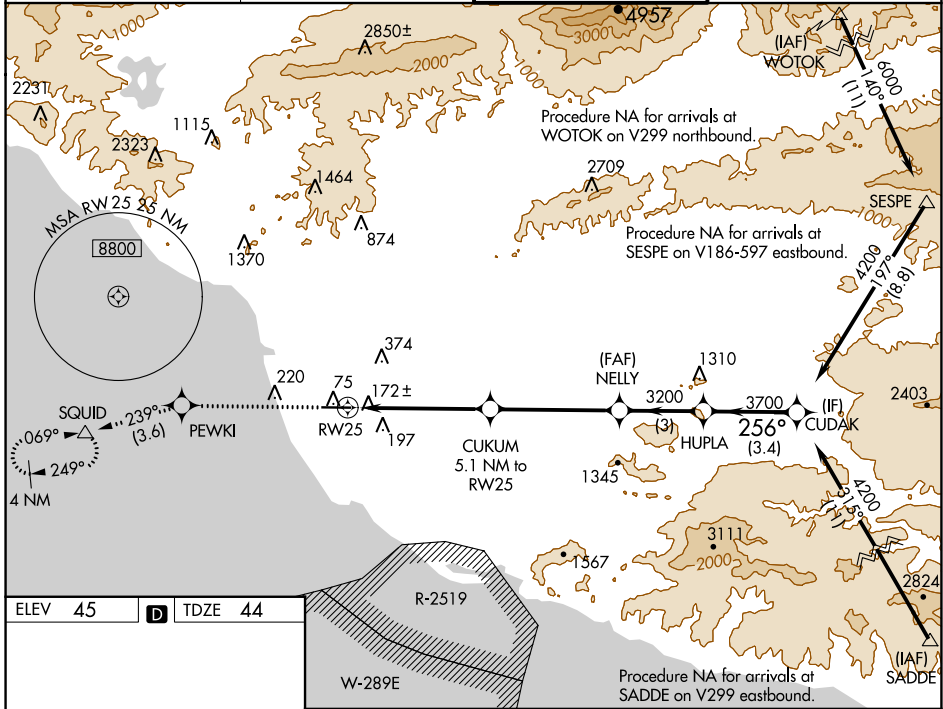
WAAS CH <b>86299</b> <b>W25A</b>	APP CRS <b>256°</b>	Rwy Idg <b>5500</b> TDZE <b>44</b> Apt Elev <b>45</b>
--	------------------------	---

# RNAV (GPS) RWY 25

OXNARD (OXR)

RNP APCH - GPS.	MALSF	MISSED APPROACH: Climb to 2000 direct PEWKI and on track 239° to SQUID and hold.
<p><b>⚠</b> Inoperative table does not apply. Baro-VNAV NA when using Camarillo altimeter setting. For uncompensated Baro-VNAV systems, LNAV/VNAV NA below -15°C or above 43°C. When local altimeter setting not received, use Camarillo altimeter setting and increase LPV DA to 440 feet, LNAV/VNAV DA to 437 feet. Increase all MDAs 20 feet and Circling Cat C visibility ¼ SM.</p>		

ATIS <b>118.05</b>	POINT MUGU APP CON* <b>124.7 335.5</b>	OXNARD TOWER* <b>134.95 (CTAF) 0 257.8</b>	GND CON <b>121.9</b>
-----------------------	---	---	-------------------------



ELEV 45	<b>D</b>	TDZE 44	<p>Procedure NA for arrivals at SADDE on V299 eastbound.</p>				
<p>2000</p>		PEWKI	tr 239°	SQUID	NELLY	HUPLA	CUDAK
<p>↑</p>		◆		△	◆	◆	◆
<p>5953 X 100</p>		<p>1.3 NM to RW25</p>		<p>CUKUM 5.1 NM to RW25</p>		<p>3200</p>	
<p>TWR 117</p>		<p>1720</p>		<p>3200</p>		<p>256°</p>	
<p>MIRL Rwy 7-25</p>		<p>1.3 NM</p>		<p>3.8 NM</p>		<p>3700</p>	
<p>112</p>		<p>4.6 NM</p>		<p>3 NM</p>		<p>4200</p>	
<p>256°</p>		<p>GP 3.00°</p>		<p>TCH 58</p>			
CATEGORY	A	B	C	D			
LPV DA	424-1				380 (400-1)		
LNAV/VNAV DA	421-1				377 (400-1)		
LNAV MDA	520-1	476 (500-1)	520-1 <sup>3</sup> / <sub>8</sub>	476 (500-1 <sup>3</sup> / <sub>8</sub> )			
CIRCLING	520-1	475 (500-1)	700-1 <sup>3</sup> / <sub>4</sub>	760-2 <sup>1</sup> / <sub>4</sub>	655 (700-1 <sup>3</sup> / <sub>4</sub> )	715 (800-2 <sup>1</sup> / <sub>4</sub> )	

SW-3, 26 DEC 2024 to 23 JAN 2025

SW-3, 26 DEC 2024 to 23 JAN 2025