

LOC I-PGQ <b>110.1</b>	APP CRS <b>165°</b>	Rwy ldg <b>10518</b> TDZE <b>100</b> Apt Elev <b>100</b>
---------------------------	------------------------	--

# ILS or LOC RWY 16

PORTSMOUTH INTL AT PEASE (PSM)

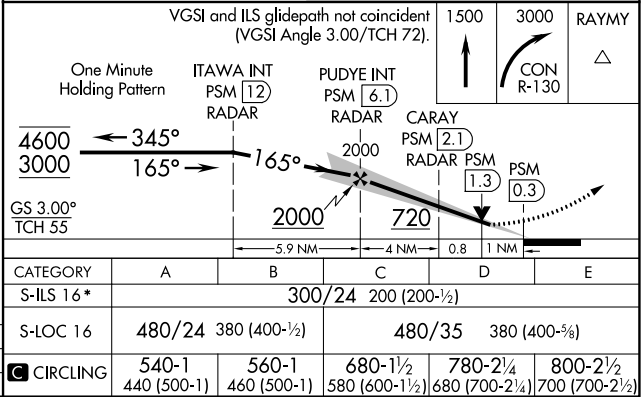
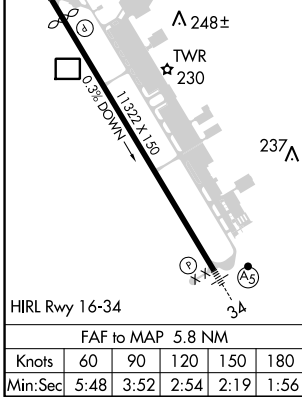
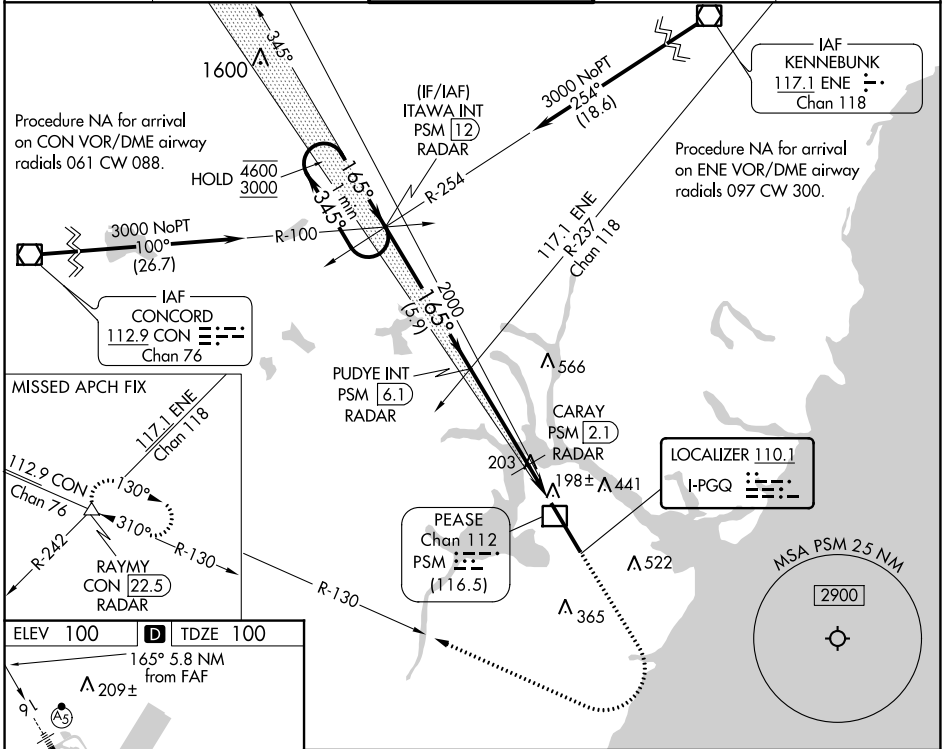
DME or RADAR required.

⚠ Circling NA east of Rwy 16-34. DME from PSM DME. Simultaneous reception of I-PGQ and PSM DME required. For inop ALS, increase S-ILS 16 Cat D visibility to RVR 4000; increase S-LOC 16 Cat C/D/E visibility to RVR 5500. \* RVR 1800 authorized with use of FD or AP or HUD to DA (NA when using Rochester altimeter setting).

MALSR

MISSED APPROACH: Climb to 1500 then climbing right turn to 3000 on CON VOR/DME R-130 to RAYMY INT/CON VOR/DME 22.5 DME/RADAR and hold.

ATIS <b>132.05 273.5</b>	BOSTON APP CON <b>125.05 269.4</b>	PORTSMOUTH TOWER <b>128.4 269.0</b>	GND CON <b>120.95 275.8</b>	CLNC DEL <b>335.8</b>
-----------------------------	---------------------------------------	--	--------------------------------	--------------------------



NE-1, 26 DEC 2024 to 23 JAN 2025

NE-1, 26 DEC 2024 to 23 JAN 2025