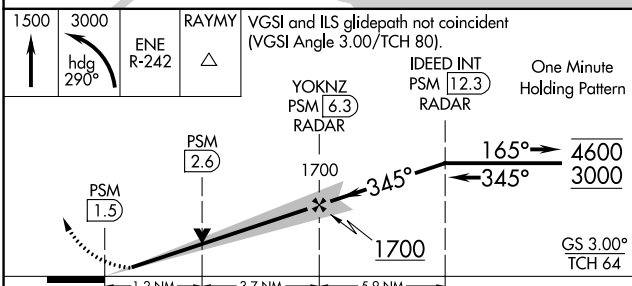
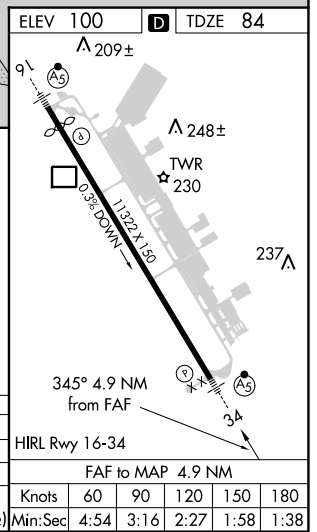
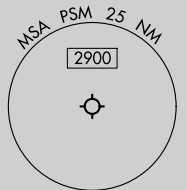
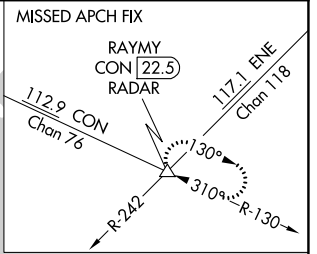
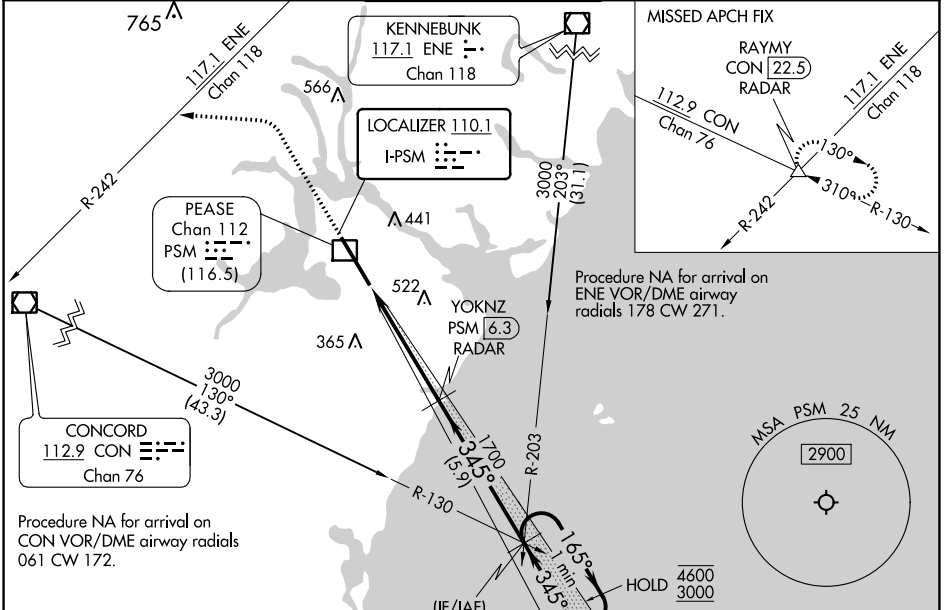


LOC I-PSM <b>110.1</b>	APP CRS <b>345°</b>	Rwy Idg TDZE Apt Elev	<b>11321</b> <b>84</b> <b>100</b>
---------------------------	------------------------	-----------------------------	---

# ILS or LOC RWY 34

PORTSMOUTH INTL AT PEASE (PSM)

DME or RADAR required.		MALSR 	MISSED APPROACH: Climb to 1500 then dimbing left turn on heading 290° to 3000 and ENE VOR/DME R-242 to RAYMY INT/CON VOR/DME 22.5 DME/RADAR and hold.	
ATIS <b>132.05 273.5</b>	BOSTON APP CON <b>125.05 269.4</b>	PORTSMOUTH TOWER <b>128.4 269.0</b>	GND CON <b>120.95 275.8</b>	CLNC DEL <b>335.8</b>



CATEGORY	A	B	C	D	E
S-ILS 34	284/24 200 (200-½)				
S-LOC 34	540/45 456 (500-¾)				
CIRCLING	540-1 440 (500-1)	560-1 460 (500-1)	680-1½ 580 (600-1½)	780-2¼ 680 (700-2¼)	800-2½ 700 (700-2½)

Knots	60	90	120	150	180
Min:Sec	4:54	3:16	2:27	1:58	1:38

NE-1, 26 DEC 2024 to 23 JAN 2025

NE-1, 26 DEC 2024 to 23 JAN 2025