

WAAS CH <b>40012</b> <b>W16A</b>	APP CRS <b>165°</b>	Rwy Idg TDZE Apt Elev	<b>10518</b> <b>100</b> <b>100</b>
--	------------------------	-----------------------------	--

# RNAV (GPS) RWY 16

PORTSMOUTH INTL AT PEASE (PSM)

RNP APCH - GPS.

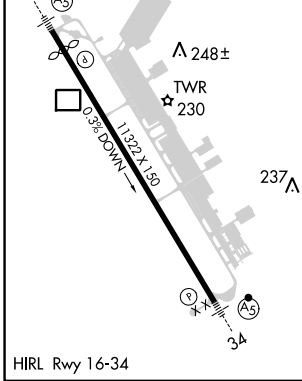
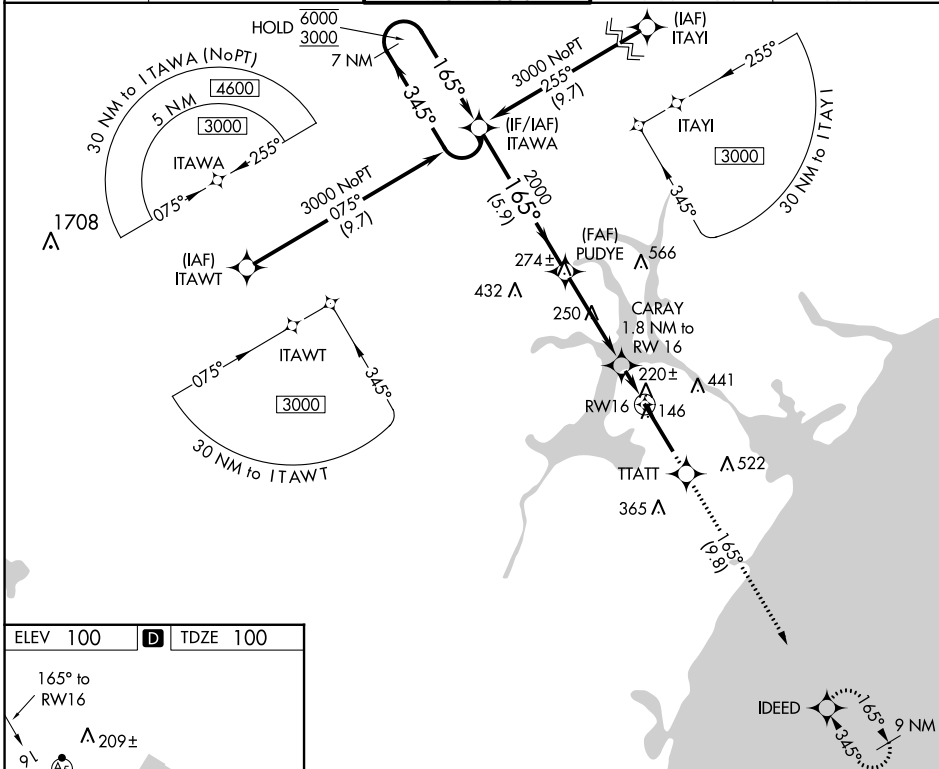
**⚠** For uncompensated Baro-VNAV systems, LNAV/VNAV NA below -15°C or above 54°C. Circling NA east of Rwy 16-34. For inop ALS, increase LPV Cat E visibility to RVR 4500; increase LNAV/VNAV all Cats visibility to RVR 4500; increase LNAV Cat C/D/E visibility to RVR 5500. \* RVR 1800 authorized with use of FD or AP or HUD to DA (NA when using Rochester altimeter setting).

MALSR



**MISSED APPROACH:**  
Climb to 3000 direct TTATT and track 165° to IDEED and hold, continue climb-in-hold to 3000.

ATIS <b>132.05 273.5</b>	BOSTON APP CON <b>125.05 269.4</b>	<b>PORTSMOUTH TOWER</b> <b>128.4 269.0</b>	GND CON <b>120.95 275.8</b>	CLNC DEL <b>335.8</b>
-----------------------------	---------------------------------------	---	--------------------------------	--------------------------



ELEV 100	<b>D</b>	TDZE 100			
VGSi and RNAV glidepath not coincident 7 NM (VGSi Angle 3.00/TCH 72). Holding Pattern ITAWA					
6000 3000	345° ← 165° →	PUDYE 2000 CARAY 1.8 NM to RWY 16 720 1 NM to RWY 16 RWY 16	3000 TTATT tr 165° IDEED		
GP 3.00° TCH 55		5.9 NM 4 NM 0.8 NM 1 NM			
CATEGORY LPV DA* LNAV/VNAV DA LNAV MDA CIRCLING	A 300/24 397/24 480/24 500-1 400 (400-1)	B 200 (200-½) 297 (300-½) 380 (400-½) 560-1 460 (500-1)	C 200 (200-½) 297 (300-½) 480/35 680-1½ 580 (600-1½)	D 380 (400-½) 780-2¼ 680 (700-2¼)	E 800-2½ 700 (700-2½)

NE-1, 26 DEC 2024 to 23 JAN 2025

NE-1, 26 DEC 2024 to 23 JAN 2025