

NDB RWY 23

NDB FK 273	APCH CRS 225°	Rwy ldg 10,926 TDZE 571 Arprt Elev 571
----------------------	-------------------------	-------------------------------------------------------

[USA]

CAMPBELL AAF (KHOP)

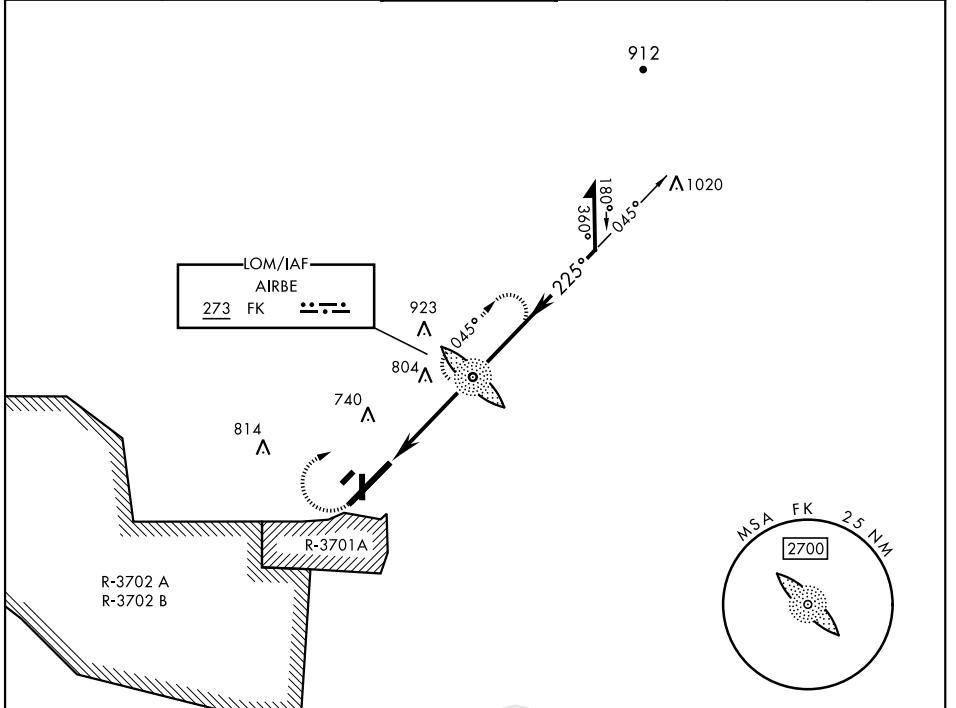
RADAR required

▼ * When ALS inop, increase CAT AB RVR to 55, vis to 1mile; CAT CD vis to 1½ miles.
** Circling not authorized SE of Rwy 5-23.



MISSED APPROACH: Climb to 1200, then climbing right turn to 2500 direct to FK LOM and continue climb-in-hold (max 230 KIAS).

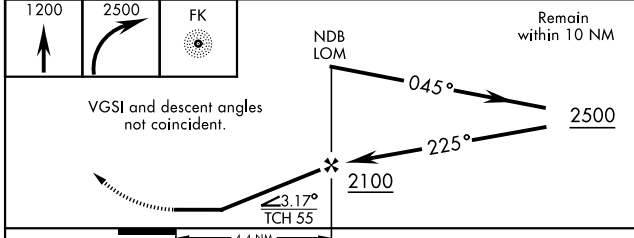
ATIS 125.175 308.4	APP CON 118.1 269.525	TOWER 120.9 278.8	GND CON 121.8 266.8	CLNC DEL 138.8	ASR/PAR
------------------------------	---------------------------------	-----------------------------	-------------------------------	--------------------------	---------



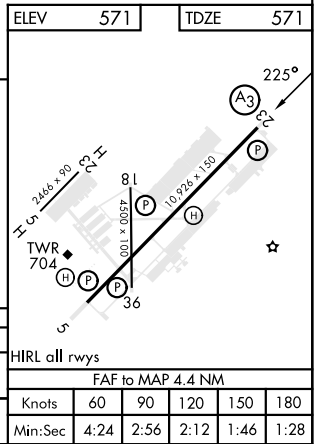
SE-1, 26 DEC 2024 to 23 JAN 2025

SE-1, 26 DEC 2024 to 23 JAN 2025

ELEV	571	TDZE	571
------	-----	------	-----



CATEGORY	A	B	C	D
S-23*	1120/40 549 (600-¾)		1120/60 549 (600-1½)	
CIRCLING**	1120-1 549 (600-1)		1120-1½ 549 (600-1½)	1140-2 569 (600-2)



FORT CAMPBELL, KENTUCKY
Amdt 13 20APR23

36°40'N-87°30'W

CAMPBELL AAF (KHOP)

NDB RWY 23

FAF to MAP 4.4 NM					
Knots	60	90	120	150	180
Min:Sec	4:24	2:56	2:12	1:46	1:28