

FORT CAMPBELL, KENTUCKY

RNAV (GPS) RWY 23

WAAS Chan 56203 W23A	APCH CRS 225°	Rwy Idg 10,926 TDZE 571 Arprt Elev 571
--	-------------------------	---

[USA]

CAMPBELL AAF (KHOP)

RNP APCH - GPS

* When ALS inop, increase RVR to 40, vis to 3/4 mile.
 ** When ALS inop, increase RVR to 55, vis to 1 mile.
 *** When ALS inop, increase CAT AB RVR to 55, vis to 1 mile,
 CAT CDE RVR to 60, vis to 1 1/8 miles.
 **** Circling NA SE of Rwy 5-23.

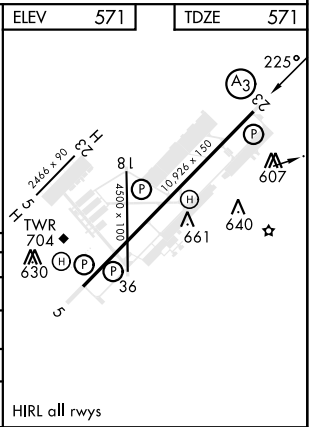
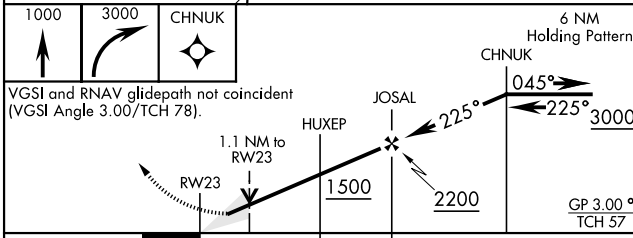
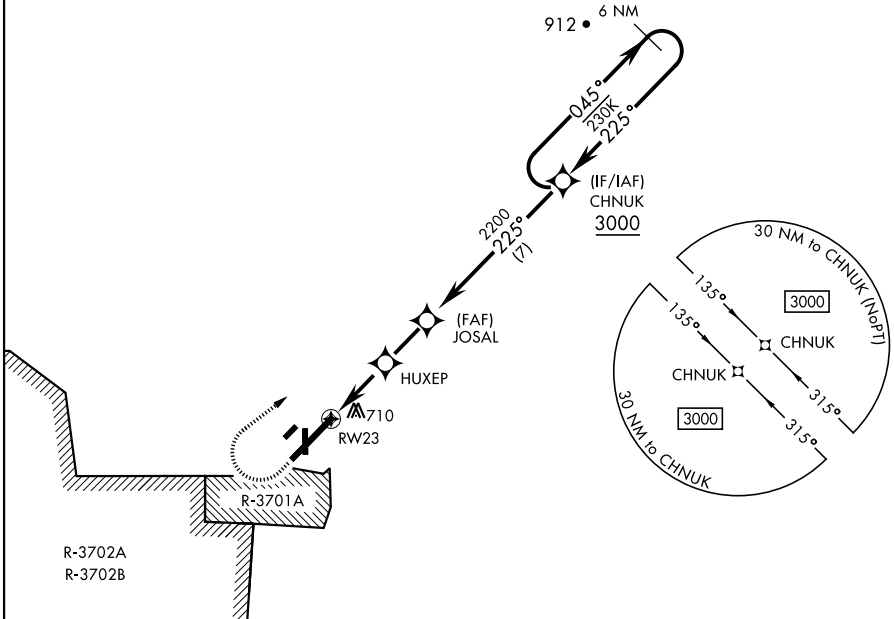
SSALR



MISSED APPROACH: Climb to 1000 then climbing right turn to 3000 direct CHNUK and hold.

ATIS 125.175 308.4	APP CON 118.1 269.525	TOWER 120.9 278.8	GND CON 121.8 266.8	CLNC DEL 138.8	ASR/PAR
------------------------------	---------------------------------	-----------------------------	-------------------------------	--------------------------	---------

For uncompensated BARO-VNAV systems, LNAV/VNAV NA below -19°C (-2°F) or above 54°C (130°F).



CATEGORY	A	B	C	D	E
LPV DA *	771/24		200	(200-1/2)	
LNAV/VNAV DA **	949/35		378	(400-3/8)	
LNAV MDA ***	960/24	389 (400-1/2)	960/35		389 (400-3/4)
**** CIRCLING	1060-1	489 (500-1)	1060-1 1/2 489 (500-1 1/2)	1140-2	569 (600-2)

FORT CAMPBELL, KENTUCKY

36° 40' N - 87° 30' W

CAMPBELL AAF (KHOP)

Amdt 2 18MAY23

RNAV (GPS) RWY 23

SE-1, 26 DEC 2024 to 23 JAN 2025

SE-1, 26 DEC 2024 to 23 JAN 2025