

LOC I-JMS 109.3	APP CRS 131°	Rwy Idg TDZE Apt Elev	6502 1500 1500
---------------------------	------------------------	-----------------------------	---

LOC BC RWY 13

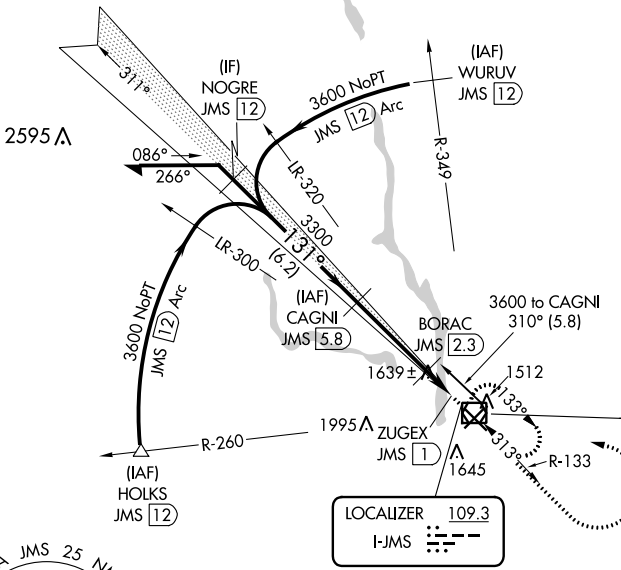
JAMESTOWN RGNL (JMS)

▽ Rwy 13 helicopter visibility reduction below ¾ SM NA.
▲ NA DME required. DME from JMS VOR/DME. Simultaneous reception of I-JMS and JMS VOR/DME required.

MISSED APPROACH: Climb to 3600 then left turn direct JMS VOR/DME and hold.

ASOS 118.425	MINNEAPOLIS CENTER 124.2 270.3	UNICOM 123.0 (CTAF) 0
------------------------	--	---------------------------------

DME REQUIRED
BACK COURSE



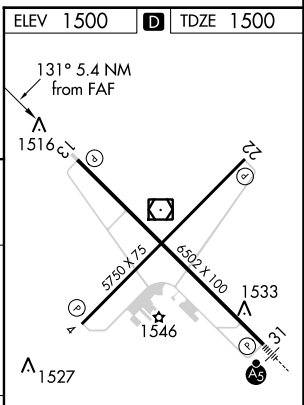
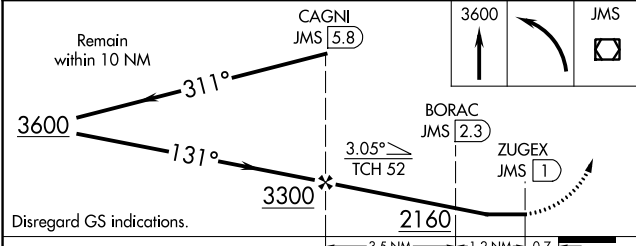
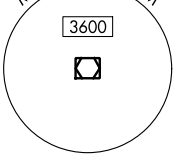
Procedure NA for arrival on JMS VOR/DME airway radials 260 CW 333.

JAMESTOWN
114.5 JMS
Chan 92

LOCALIZER 109.3
I-JMS

NC-1, 26 DEC 2024 to 23 JAN 2025

NC-1, 26 DEC 2024 to 23 JAN 2025



CATEGORY	A	B	C	D
S-13	1900-1	400 (400-1)	1900-1½	400 (400-1½)
C CIRCLING	1960-1	460 (500-1)	2000-1½	2300-2½
			500 (500-1½)	800 (800-2½)

MIRL Rwy 4-22 0
 HIRL Rwy 13-31 0
 REIL Rws 4, 13, and 22 0