

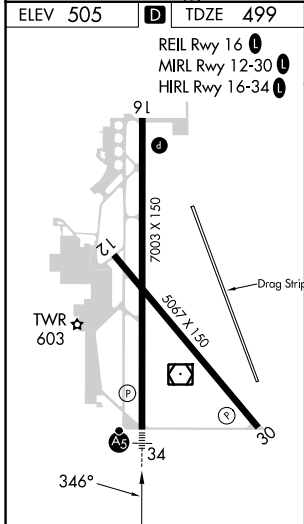
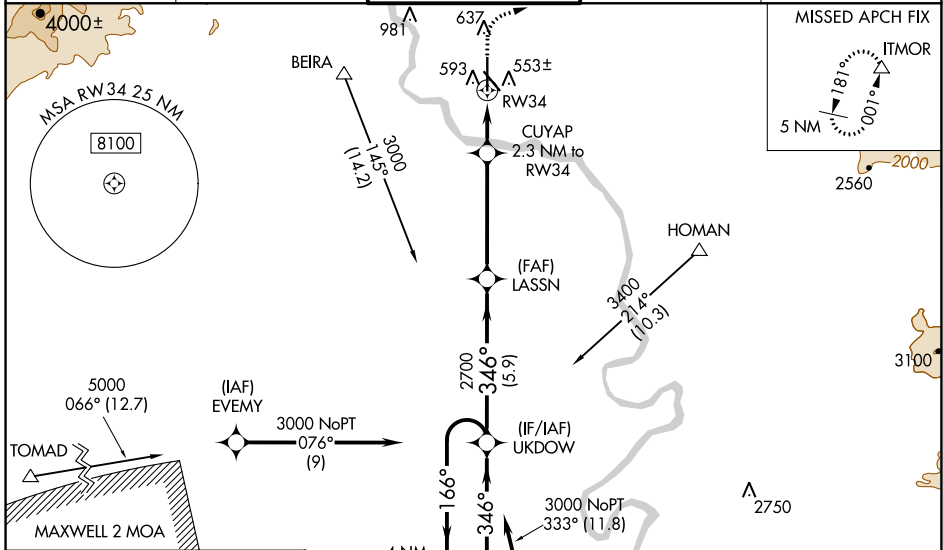
WAAS CH 56402 W34A	APP CRS 346°	Rwy Idg TDZE Apt Elev	7003 499 505
--	------------------------	-----------------------------	---

RNAV (GPS) RWY 34

REDDING RGNL (RDD)

RNP APCH.	MALSRS	MISSED APPROACH: Climb to 1700 then climbing right turn to 5000 direct ITMOR, continue climb-in-hold to 5000.
<p>▽ For uncompensated Baro-VNAV systems, LNAV/VNAV NA below -4°C or above 54°C. For inop ALS, increase LNAV/VNAV all Cats visibility to ¾ SM and LNAV Cat C, D visibility to 1 SM.</p>		

ATIS 124.1	OAKLAND CENTER 132.2 350.3	REDDING TOWER * 119.8(CTAF) 0 269.25	GND CON 121.7	UNICOM 122.95
----------------------	--------------------------------------	---	-------------------------	-------------------------



ELEV 505	TDZE 499	<p>REIL Rwy 16</p> <p>MIRL Rwy 12-30</p> <p>HIRL Rwy 16-34</p>																											
<p>4 NM Holding Pattern</p> <p>UKDOW</p> <p>6000 ← 166°</p> <p>3000 → 346°</p> <p>GP 3.00° TCH 52</p>		<p>VGSI and RNAV glidepath not coincident (VGSI Angle 3.00/TCH 55).</p> <p>LASSN 2700</p> <p>CUYAP 2.3 NM to RW34</p> <p>*1260</p> <p>*1 NM to RW34</p>		1700	5000	ITMOR																							
<p>4 NM Holding Pattern</p> <p>UKDOW</p> <p>6000 ← 166°</p> <p>3000 → 346°</p> <p>GP 3.00° TCH 52</p>	<p>LASSN 2700</p> <p>CUYAP 2.3 NM to RW34</p> <p>*1260</p> <p>*1 NM to RW34</p>		1700	5000	ITMOR																								
<table border="1"> <tr> <th>CATEGORY</th> <th>A</th> <th>B</th> <th>C</th> <th>D</th> </tr> <tr> <td>LPV DA</td> <td></td> <td>699-½</td> <td>200 (200-½)</td> <td></td> </tr> <tr> <td>LNAV/VNAV DA</td> <td></td> <td>754-½</td> <td>255 (300-½)</td> <td></td> </tr> <tr> <td>LNAV MDA</td> <td>860-½</td> <td>361 (400-½)</td> <td>860-⅝</td> <td>361 (400-⅝)</td> </tr> <tr> <td>C CIRCLING</td> <td>940-1 435 (500-1)</td> <td>1000-1 495 (500-1)</td> <td>1120-1¾ 615 (700-1¾)</td> <td>1340-2¾ 835 (900-2¾)</td> </tr> </table>	CATEGORY	A	B	C	D	LPV DA		699-½	200 (200-½)		LNAV/VNAV DA		754-½	255 (300-½)		LNAV MDA	860-½	361 (400-½)	860-⅝	361 (400-⅝)	C CIRCLING	940-1 435 (500-1)	1000-1 495 (500-1)	1120-1¾ 615 (700-1¾)	1340-2¾ 835 (900-2¾)				
CATEGORY	A	B	C	D																									
LPV DA		699-½	200 (200-½)																										
LNAV/VNAV DA		754-½	255 (300-½)																										
LNAV MDA	860-½	361 (400-½)	860-⅝	361 (400-⅝)																									
C CIRCLING	940-1 435 (500-1)	1000-1 495 (500-1)	1120-1¾ 615 (700-1¾)	1340-2¾ 835 (900-2¾)																									

SW-2, 26 DEC 2024 to 23 JAN 2025

SW-2, 26 DEC 2024 to 23 JAN 2025