

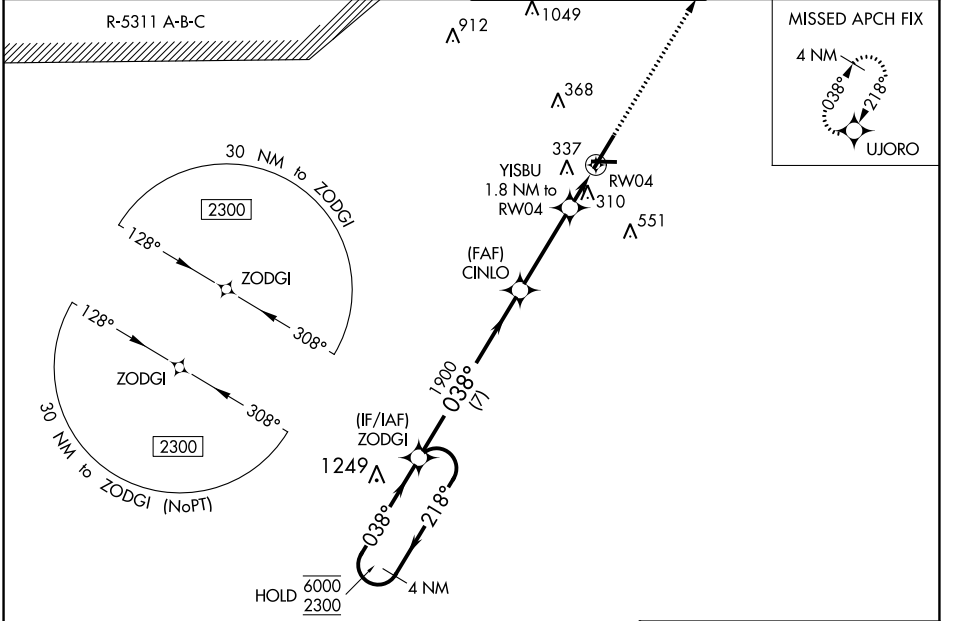
WAAS CH 50111 W04A	APP CRS 038°	Rwy Idg TDZE Apt Elev	6508 189 189
--	------------------------	-----------------------------	---

RNAV (GPS) RWY 4

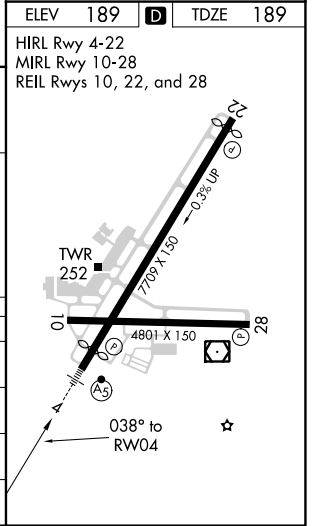
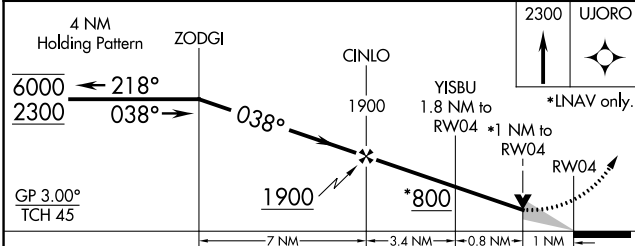
FAYETTEVILLE RGNL/GRANNIS FLD (FAY)

RNP APCH.	MALSR	MISSED APPROACH: Climb to 2300 direct UJORO and hold.
For uncompensated Baro-VNAV systems, LNAV/VNAV NA below -10° C or above 54°C. # RVR 1800 authorized with use of FD or AP or HUD to DA.		

ATIS 121.25	FAYETTEVILLE APP CON 133.0 290.25	FAYETTEVILLE TOWER 118.3 269.2	GND CON 121.7 348.6
-----------------------	---	--	-------------------------------



ELEV 189	TDZE 189
HIRL Rwy 4-22	MIRL Rwy 10-28
REIL Rwys 10, 22, and 28	



CATEGORY	A	B	C	D
LPV DA #		389/24	200 (200-½)	
LNAV/VNAV DA		588/35	399 (400-⅙)	
LNAV MDA		560/24	371 (400-½)	
CIRCLING	640-1	660-1	860-2	860-2¼
	451 (500-1)	471 (500-1)	671 (700-2)	671 (700-2¼)

SE-2, 26 DEC 2024 to 23 JAN 2025

SE-2, 26 DEC 2024 to 23 JAN 2025