

VOR/DME RIW <b>114.05</b> Chan 87(Y)	APP CRS <b>293°</b>	Rwy Idg TDZE Apt Elev	<b>8204</b> <b>5459</b> <b>5516</b>
--	------------------------	-----------------------------	---

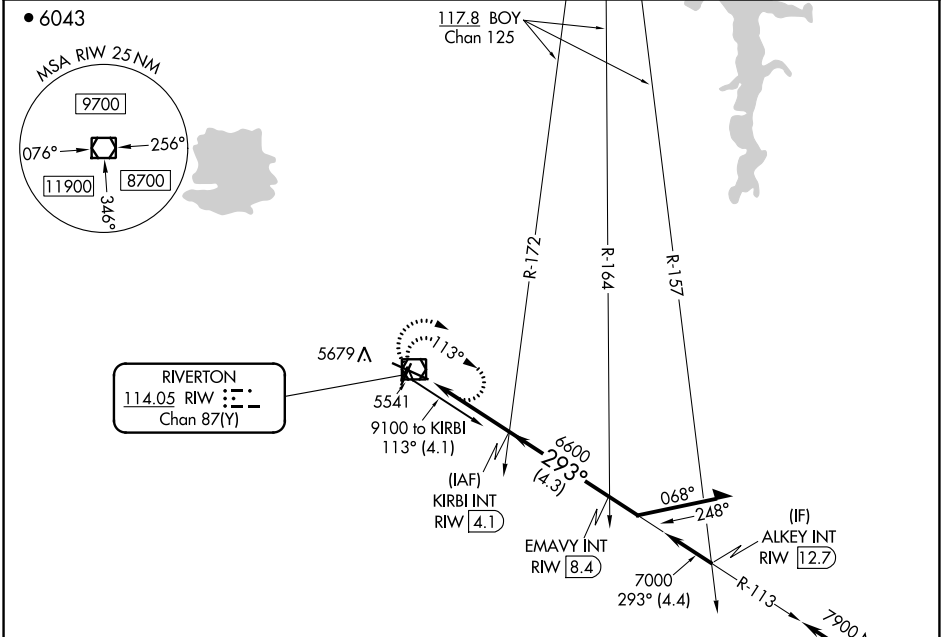
# VOR RWY 28

CENTRAL WYOMING RGNL (RIW)

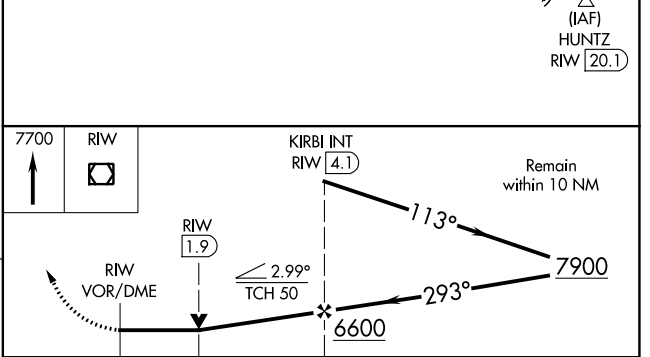
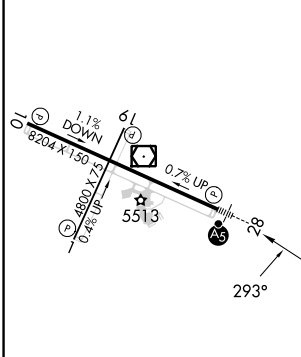
**⚠** When local altimeter setting not received, use Lander altimeter setting and increase all MDA 60 feet. VDP NA when using Lander altimeter setting. For inop MALS, increase S-28 Cat C and D visibility to 1½ miles.

**MALS** MISSED APPROACH: Climb to 7700 in RIW VOR/DME holding pattern.

ASOS <b>121.425</b>	SALT LAKE CENTER <b>133.25 285.6</b>	UNICOM <b>122.8 (CTAF)</b>
------------------------	---	-------------------------------



ELEV 5516	<b>D</b>	TDZE 5459
-----------	----------	-----------



CATEGORY	A	B	C	D
S-28	5920-½ 461 (500-½)		5920-1 461 (500-1)	
<b>C</b> CIRCLING	6000-1 484 (500-1)		6000-1½ 484 (500-1½)	6120-2 604 (700-2)

- REIL Rwy 1, 10 and 19
- MIRL Rwy 1-19
- HIRL Rwy 10-28

NW-1, 26 DEC 2024 to 23 JAN 2025

NW-1, 26 DEC 2024 to 23 JAN 2025