

ST AUGUSTINE, FLORIDA

AL-692 (FAA)

23054

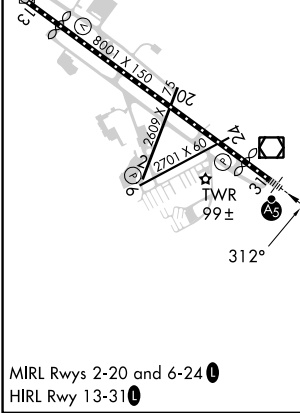
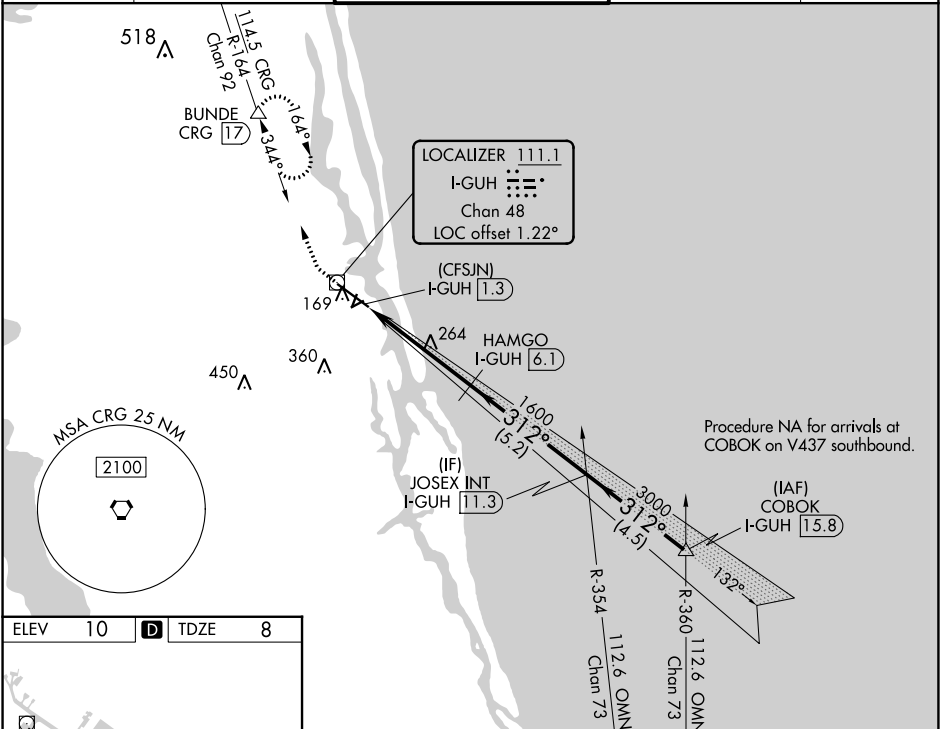
LOC/DME I-GUH <b>111.1</b> Chan <b>48</b>	APP CRS <b>312°</b>	Rwy ldg <b>5925</b> TDZE <b>8</b> Apt Elev <b>10</b>
---	------------------------	--

# ILS or LOC RWY 31

NORTHEAST FLORIDA RGNL (SGJ)

DME required.	MALSR	MISSED APPROACH: Climb to 3000 on heading 312° and on CRG VORTAC R-164 to BUNDE/CRG 17 DME and hold, continue climb-in-hold to 3000.
<b>⚠</b> Circling Rwy 2, 6 NA at night. For inop ALS, increase S-LOC 31 Cat C/D visibility to 1½ SM.		

ATIS <b>119.625</b>	JACKSONVILLE APP CON <b>120.75</b>	ST AUGUSTINE TOWER ★ <b>127.625 (CTAF) 269.475</b>	GND CON <b>121.175 251.125</b>	UNICOM <b>122.95</b>
------------------------	---------------------------------------	---	-----------------------------------	-------------------------



ELEV 10	<b>D</b> TDZE 8		
3000	CRG R-164	BUNDE	VGSI and ILS glidepath not coincident (VGSI Angle 3.00/TCH 54).
hdg 312°			
*LOC only.	JOSEX INT I-GUH 11.3	COBOK I-GUH 15.8	
	*I-GUH 2.7	HAMGO I-GUH 6.1	
	(CFSJN) I-GUH 1.3	1600	
		312°	
		3000	
		312°	
		3000	
			GS 3.00° TCH 57
	1.4 NM	3.4 NM	5.2 NM
			4.5 NM

CATEGORY	A	B	C	D
S-ILS 31	258-½ 250 (300-½)			
S-LOC 31	520-½	512 (600-½)	520-1	512 (600-1)
<b>C</b> CIRCLING	520-1	580-1	680-1¾	740-2½
	510 (600-1)	570 (600-1)	670 (700-1¾)	730 (800-2½)

ST AUGUSTINE, FLORIDA  
Amdt 1A 12AUG21

29°58'N-81°20'W

# ILS or LOC RWY 31

NORTHEAST FLORIDA RGNL (SGJ)

SE-3, 26 DEC 2024 to 23 JAN 2025

SE-3, 26 DEC 2024 to 23 JAN 2025