

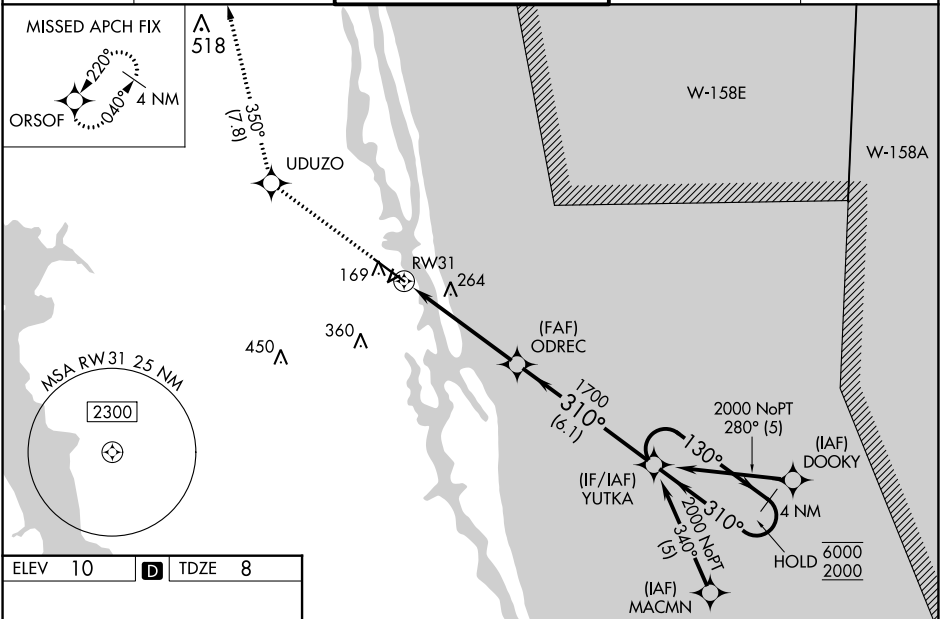
WAAS CH <b>77727</b> <b>W31A</b>	APP CRS <b>310°</b>	Rwy Idg TDZE Apt Elev	<b>5925</b> <b>8</b> <b>10</b>
--	------------------------	-----------------------------	--------------------------------------

# RNAV (GPS) RWY 31

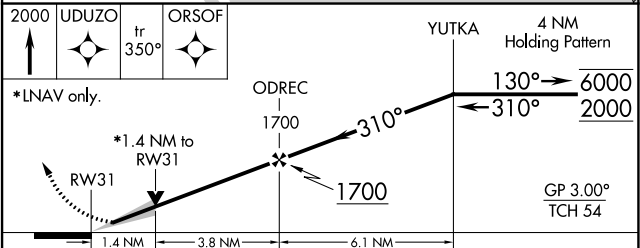
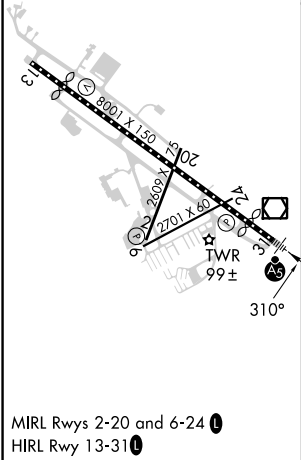
NORtheast FLORIDA RGNL (SGJ)

RNP APCH.		MALSR	MISSED APPROACH: Climb to 2000 direct UDUZO and on track 350° to ORSOF and hold.
Circling Rwy 2, 6 NA at night. For uncompensated Baro-VNAV systems, LNAV/VNAV NA below -18°C or above 54°C. For inop ALS, increase LNAV/VNAV all Cats visibility to 7/8 SM and LNAV Cat C/D visibility to 1 3/8 SM.			

ATIS <b>119.625</b>	JACKSONVILLE APP CON <b>120.75</b>	ST AUGUSTINE TOWER ★ <b>127.625 (CTAF) 269.475</b>	GND CON <b>121.175 251.125</b>	UNICOM <b>122.95</b>
------------------------	---------------------------------------	---	-----------------------------------	-------------------------



ELEV 10	<b>D</b>	TDZE 8
---------	----------	--------



CATEGORY	A	B	C	D
LPV DA		218-1/2	210 (300-1/2)	
LNAV/VNAV DA		292-1/2	284 (300-1/2)	
LNAV MDA	520-1/2	512 (600-1/2)	520-1	512 (600-1)
<b>C</b> CIRCLING	520-1 510 (600-1)	580-1 570 (600-1)	680-1 3/4 670 (700-1 3/4)	780-2 1/2 770 (800-2 1/2)

SE-3, 26 DEC 2024 to 23 JAN 2025

SE-3, 26 DEC 2024 to 23 JAN 2025