

LOC/DME I-SJC 110.9 Chan 46	APP CRS 306°	Rwy ldg 7614	30L 7597	30R 57	55
		TDZE 62		62	62
		Apt Elev			

ILS or LOC RWY 30L

NORMAN Y MINETA SAN JOSE INTL (SJC)

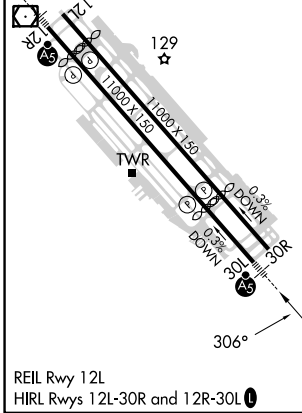
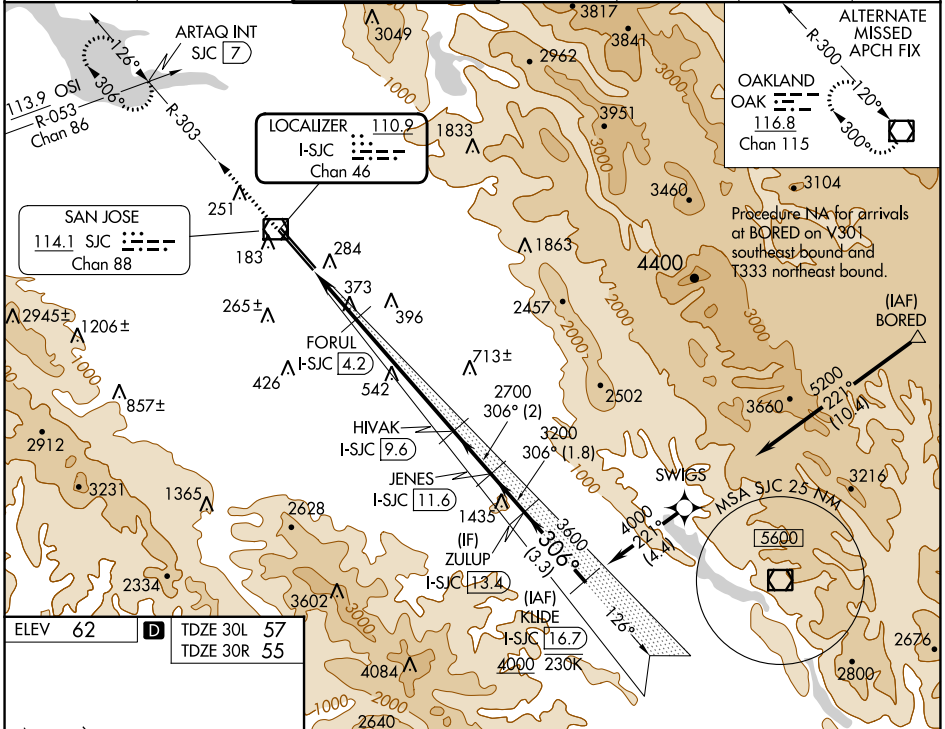
RNAV 1-GPS or RADAR required for procedure entry. DME required.
From BORED: RNAV 1-GPS required.

MALSR
Rwy 30L

MISSED APPROACH: Climb to 1900 on SJC
VOR/DME R-303 to ARTAQ INT/SJC 7 DME
and hold.

RVR 1800 authorized with use of FD or AP or HUD to DA.

D-ATIS 126.95	NORCAL APP CON 120.1 290.25	SAN JOSE TOWER* 124.0 (CTAF) 257.6	GND CON 121.7	CLNC DEL 118.0	CPDLC	UNICOM 122.95
-------------------------	---------------------------------------	--	-------------------------	--------------------------	-------	-------------------------



1900	ARTAQ INT	VGS1 and ILS glidepath not coincident (VGS1 Angle 3.00/TCH 70).			KLIDE I-SJC 16.7
SJC R-303	FORUL I-SJC 4.2	HIVAK I-SJC 9.6	JENES I-SJC 11.6	ZULUP I-SJC 13.4	4000
*LOC only	*I-SJC 3	2700	3200	3600	GS 3.00° TCH 54
I-SJC 1.4					
1.6 NM	1.2 NM	5.3 NM	2 NM	1.8 NM	3.3 NM
CATEGORY	A	B	C	D	
S-ILS 30L #	257/24 200 (200-1/2)				
S-LOC 30L	640/24	583 (600-1/2)	640-1 1/4	583 (600-1 1/4)	
SIDESTEP 30R	640-1	585 (600-1)	640-1 3/4	585 (600-1 3/4)	640-2
					585 (600-2)

SW-2, 26 DEC 2024 to 23 JAN 2025

SW-2, 26 DEC 2024 to 23 JAN 2025