

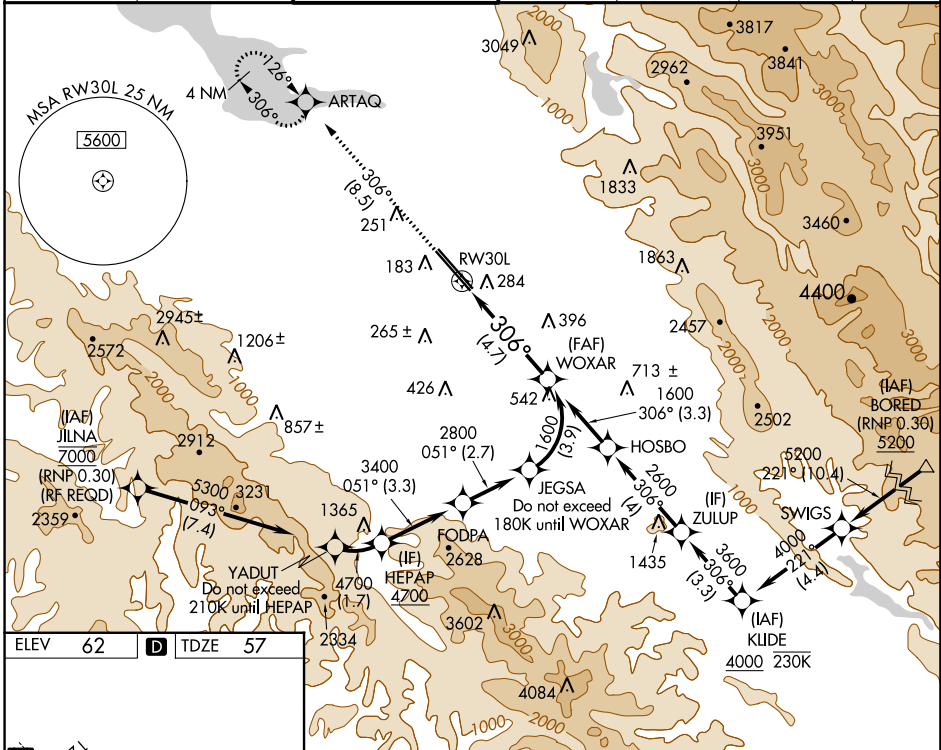
APP CRS	Rwy ldg	7614
306°	TDZE	57
	Apt Elev	62

RNAV (RNP) Z RWY 30L

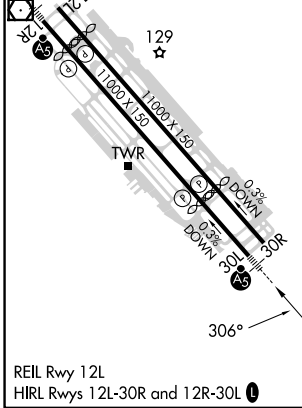
NORMAN Y MINETA SAN JOSE INTL (SJC)

RNP AR APCH.		MALSR	MISSED APPROACH: Climb to 2000 on track 306° to ARTAQ and hold.
<p>▼ For uncompensated Baro-VNAV systems, procedure NA below 1°C or above 54°C. For inop ALS, increase RNP 0.10 all Cats visibility to RVR 5500 and increase RNP 0.30 all Cats visibility to 1½ SM.</p>			

D-TIS	NORCAL APP CON	SAN JOSE TOWER ★	GND CON	CLNC DEL	CPDLC	UNICOM
126.95	120.1 290.25	124.0 (CTAF) 0 257.6	121.7	118.0		122.95



ELEV	62	D	TDZE	57
------	-----------	---	------	-----------



2000	ARTAQ	VGSI and RNAV glidepath not coincident (VGSI Angle 3.00/TCH 70).	WOXR
tr 306°			1600
See planview for multiple IF locations.			
	RW30L		1600
		4.7 NM	GP 3.00° TCH 54

CATEGORY	A	B	C	D
RNP 0.10 DA		430/35	373 (400-5%)	
RNP 0.20 DA		464/40	407 (500-3%)	
RNP 0.30 DA		541/50	484 (500-1)	

AUTHORIZATION REQUIRED