

WAAS CH 90106 W12A	APP CRS 126°	Rwy ldg TDZE Apt Elev	12R 8587 46 62	12L 8831 44 62
--	------------------------	-----------------------------	--	--

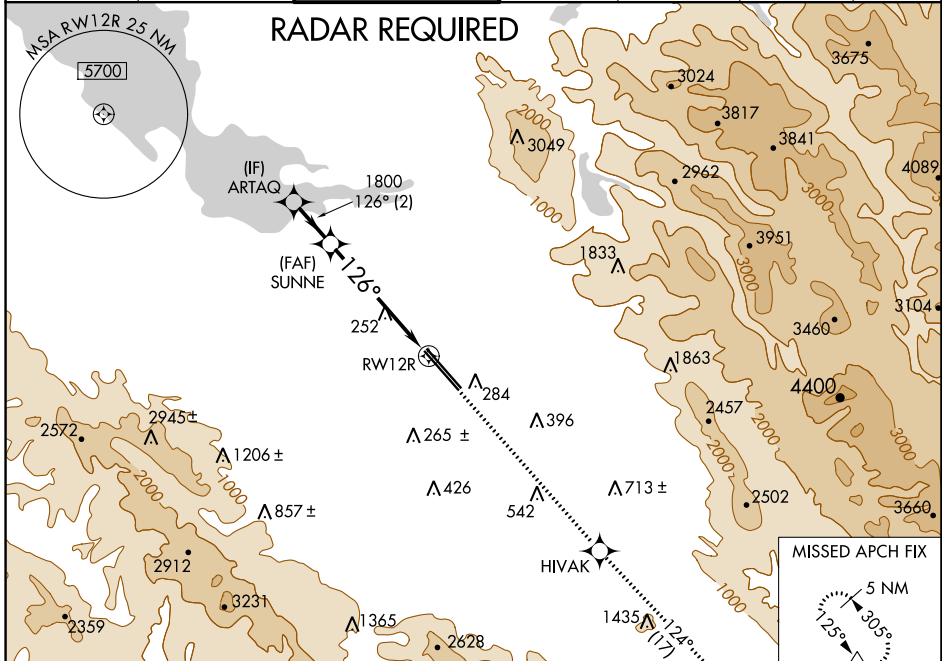
RNAV (GPS) Y RWY 12R

NORMAN Y MINETA SAN JOSE INTL (SJC)

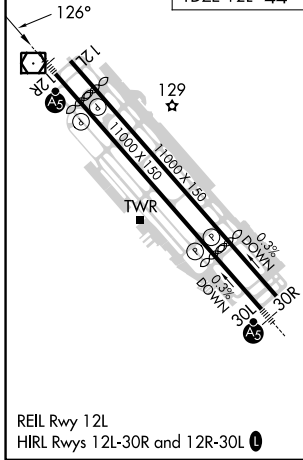
For uncompensated Baro-VNAV systems, LNAV/VNAV NA below -1°C (31°F) or above 54°C (130°F). DME/DME RNP-0.3 NA. For inoperative MALSR, increase LNAV/VNAV all Cats visibility to 1 mile and LNAV Cats C/D visibility to 1½ mile.

MALSR Rwy 12R
MISSED APPROACH: Climb to 4600 direct HIVAK and on track 124° to GILRO and hold.

D-ATIS 126.95	NORCAL APP CON 120.1 290.25	SAN JOSE TOWER * 124.0 (CTAF) 0 257.6	GND CON 121.7	CLNC DEL 118.0	CPDLC	UNICOM 122.95
-------------------------	---------------------------------------	---	-------------------------	--------------------------	-------	-------------------------



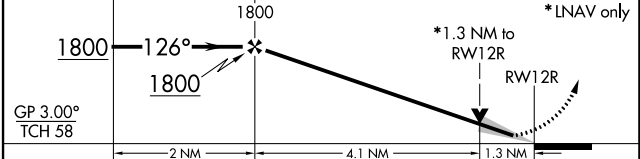
ELEV 62	TDZE 12R 46	TDZE 12L 44
---------	-------------	-------------



VGSI and RNAV glidepath not coincident (VGSI Angle 3.00/TCH 75).

4600 HIVAK tr 124° GILRO

*LNAV only



CATEGORY	A	B	C	D
LPV DA	246-½		200 (200-½)	
LNAV/VNAV DA	371-5/8 325 (400-5/8)		371-1 325 (400-1)	
LNAV MDA	520-½ 474 (500-½)		520-1 474 (500-1)	
SIDESTEP 12L	520-1 476 (500-1)		520-1½ 476 (500-1½) 520-2 476 (500-2)	

SW-2, 26 DEC 2024 to 23 JAN 2025

SW-2, 26 DEC 2024 to 23 JAN 2025