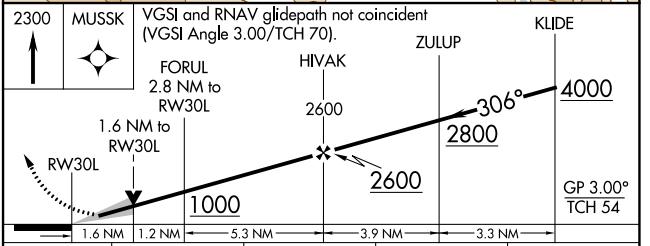
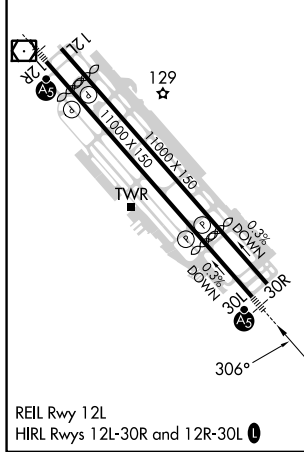
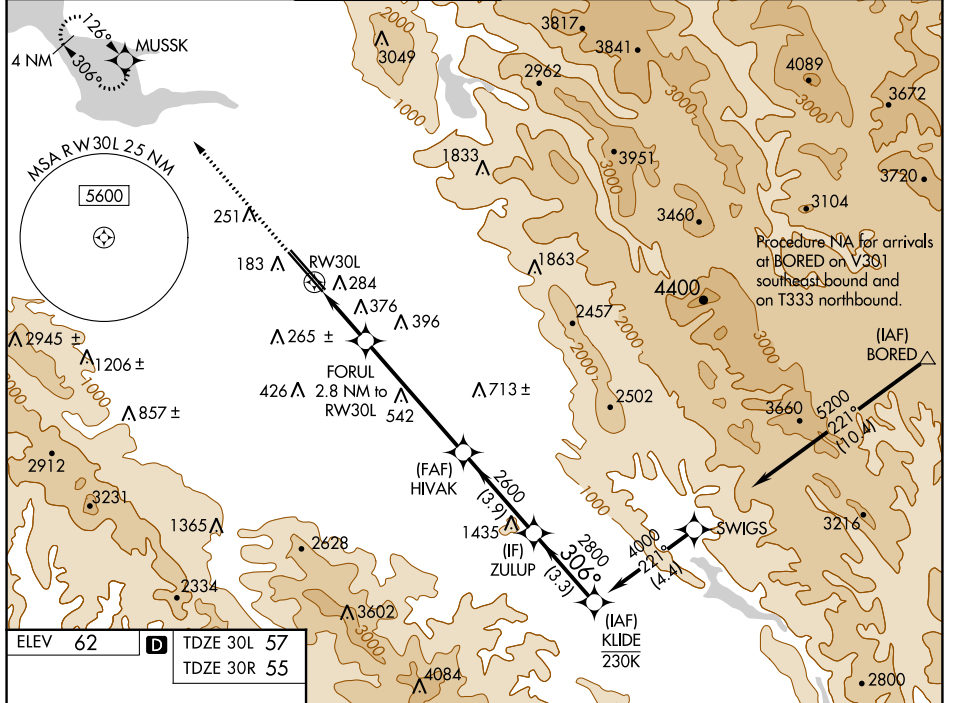


WAAS CH 97306 W30A	APP CRS 306°	Rwy ldg 30L 7614 30R 7597
		TDZE 57 55
		Apt Elev 62 62

RNAV (GPS) Y RWY 30L

NORMAN Y MINETA SAN JOSE INTL (SJC)

RNP APCH-GPS.				MALSR Rwy 30L	MISSED APPROACH: Climb to 2300 direct MUSSK and hold.	
<p>▼ For uncompensated Baro-VNAV systems, LNAV/VNAV NA below 1°C or above 54°C. For inop ALS, increase LNAV/VNAV all Cats visibility to 1½ SM. * RVR 1800 authorized with use of FD or AP or HUD to DA.</p>						
D-ATIS 126.95	NORCAL APP CON 120.1 290.25	SAN JOSE TOWER ★ 124.0 (CTAF) 257.6	GND CON 121.7	CLNC DEL 118.0	CPDLC	UNICOM 122.95



CATEGORY	A	B	C	D
LPV DA*		257/24	200 (200-½)	
LNAV/VNAV DA		540/50	483 (500-1)	
LNAV MDA	640/24	583 (600-½)	640-1¼	583 (600-1¼)
SIDESTEP 30R	640-1 585 (600-1)			

SW-2, 26 DEC 2024 to 23 JAN 2025

SW-2, 26 DEC 2024 to 23 JAN 2025