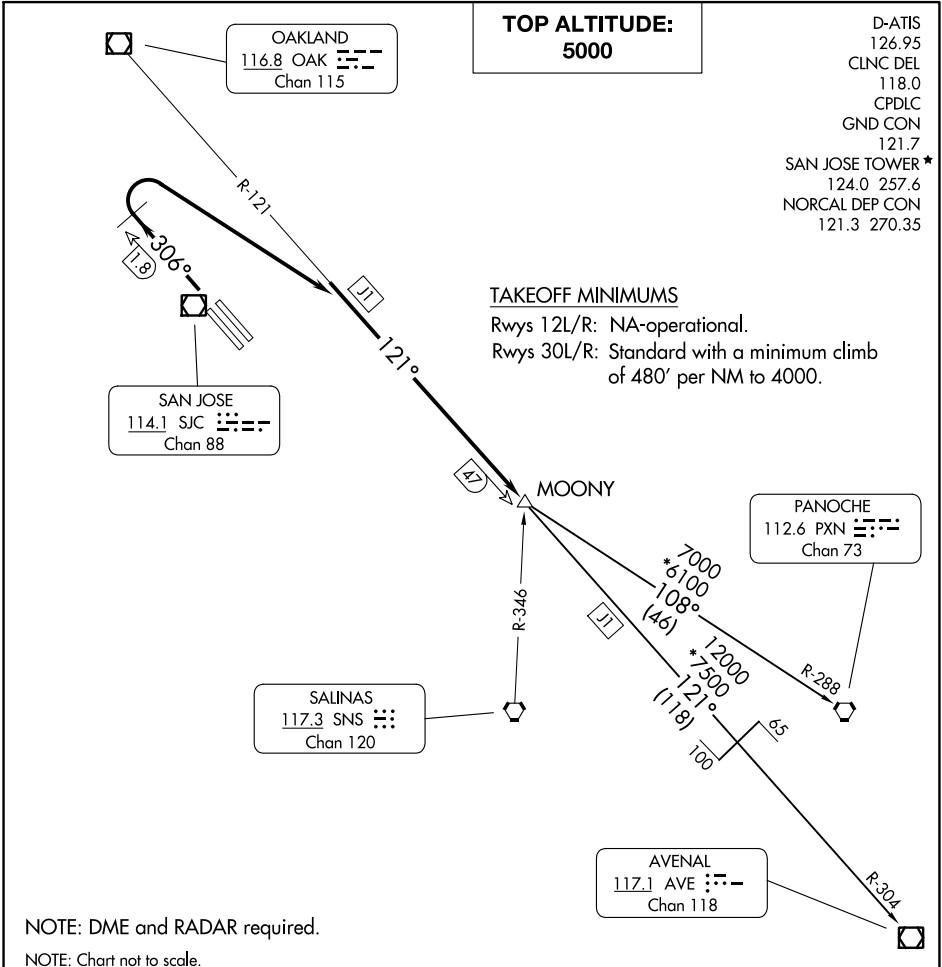


(SJC3.MOONY) 23334

# SAN JOSE THREE DEPARTURE

AL-693 (FAA)

NORMAN Y MINETA SAN JOSE INTL (SJC)  
SAN JOSE, CALIFORNIA



- D-ATIS 126.95
- CLNC DEL 118.0
- CPDLC
- GND CON 121.7
- SAN JOSE TOWER\* 124.0 257.6
- NORCAL DEP CON 121.3 270.35

**TAKEOFF MINIMUMS**  
 Rwys 12L/R: NA-operational.  
 Rwys 30L/R: Standard with a minimum climb of 480' per NM to 4000.

NOTE: DME and RADAR required.  
 NOTE: Chart not to scale.

## DEPARTURE ROUTE DESCRIPTION

**TAKEOFF RUNWAYS 30L/R:** Climb heading 306° to SJC 1.8 DME NW of SJC VOR/DME, then turn right to intercept and proceed on OAK R-121 to MOONY INT, thence. . . .  
 . . . on (transition) or (assigned route). Maintain 5000, expect clearance to filed altitude ten minutes after departure.

**AVENAL TRANSITION (SJC3.AVE):** From over MOONY INT on OAK R-121 and AVE R-304 to AVE VOR/DME.

**PANOCHÉ TRANSITION (SJC3.PXN):** From over MOONY INT on PXN R-288 to PXN VORTAC.

SW-2, 26 DEC 2024 to 23 JAN 2025

SW-2, 26 DEC 2024 to 23 JAN 2025

**SAN JOSE THREE DEPARTURE**  
(SJC3.MOONY) 15AUG19

SAN JOSE, CALIFORNIA  
NORMAN Y MINETA SAN JOSE INTL (SJC)