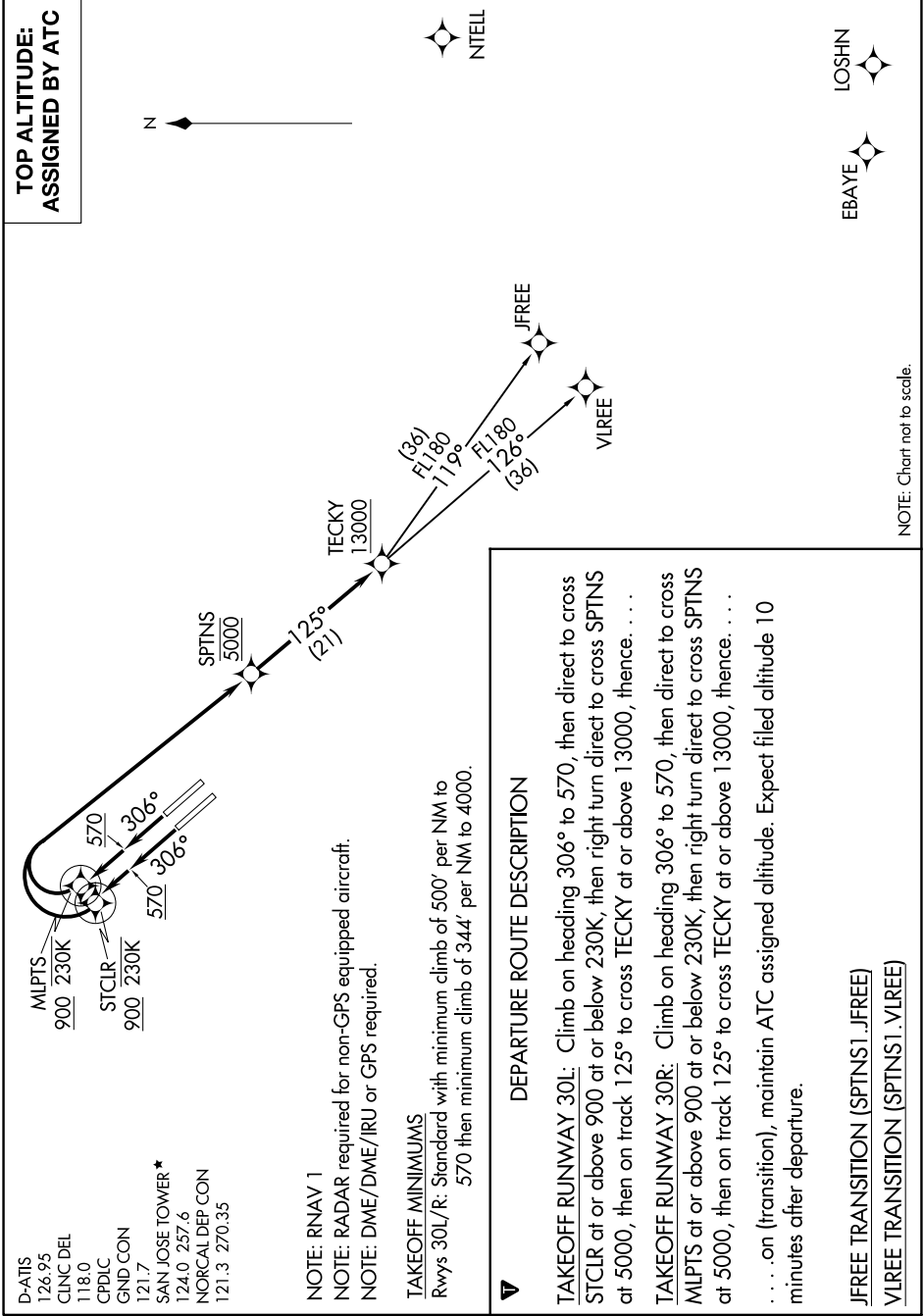


SW-2, 26 DEC 2024 to 23 JAN 2025



D-ATIS 126.95  
 CLNC DEL 118.0  
 CPDLC 121.7  
 GND CON 121.3 270.35  
 SAN JOSE TOWER \* 124.0 257.6  
 NORCAL DEP CON 121.3 270.35

**NOTE:** RNAV 1  
**NOTE:** RADAR required for non-GPS equipped aircraft.  
**NOTE:** DME/DME/IRU or GPS required.

**TAKEOFF MINIMUMS**  
 Rwys 30L/R: Standard with minimum climb of 500' per NM to 570 then minimum climb of 344' per NM to 4000.

**DEPARTURE ROUTE DESCRIPTION**

**TAKEOFF RUNWAY 30L:** Climb on heading 306° to 570, then direct to cross STCLR at or above 900 at or below 230K, then right turn direct to cross SPTNS at 5000, then on track 125° to cross TECKY at or above 13000, thence. . . .

**TAKEOFF RUNWAY 30R:** Climb on heading 306° to 570, then direct to cross MLPTS at or above 900 at or below 230K, then right turn direct to cross SPTNS at 5000, then on track 125° to cross TECKY at or above 13000, thence. . . .

. . . . (transition), maintain ATC assigned altitude. Expect filed altitude 10 minutes after departure.

**JFREE TRANSITION (SPTNS1..JFREE)**

**VLIREE TRANSITION (SPTNS1..VLIREE)**

**TOP ALTITUDE: ASSIGNED BY ATC**



NOTE: Chart not to scale.

SW-2, 26 DEC 2024 to 23 JAN 2025