

SUNOL ONE DEPARTURE

AL-693 (FAA)

NORMAN Y MINETA SAN JOSE INTL (SJC)

SAN JOSE, CALIFORNIA

D-ATIS
126.95
CLNC DEL
118.0
CPDLC
GND CON
121.7
SAN JOSE TOWER*
124.0 257.6
NORCAL DEP CON
121.3 270.35

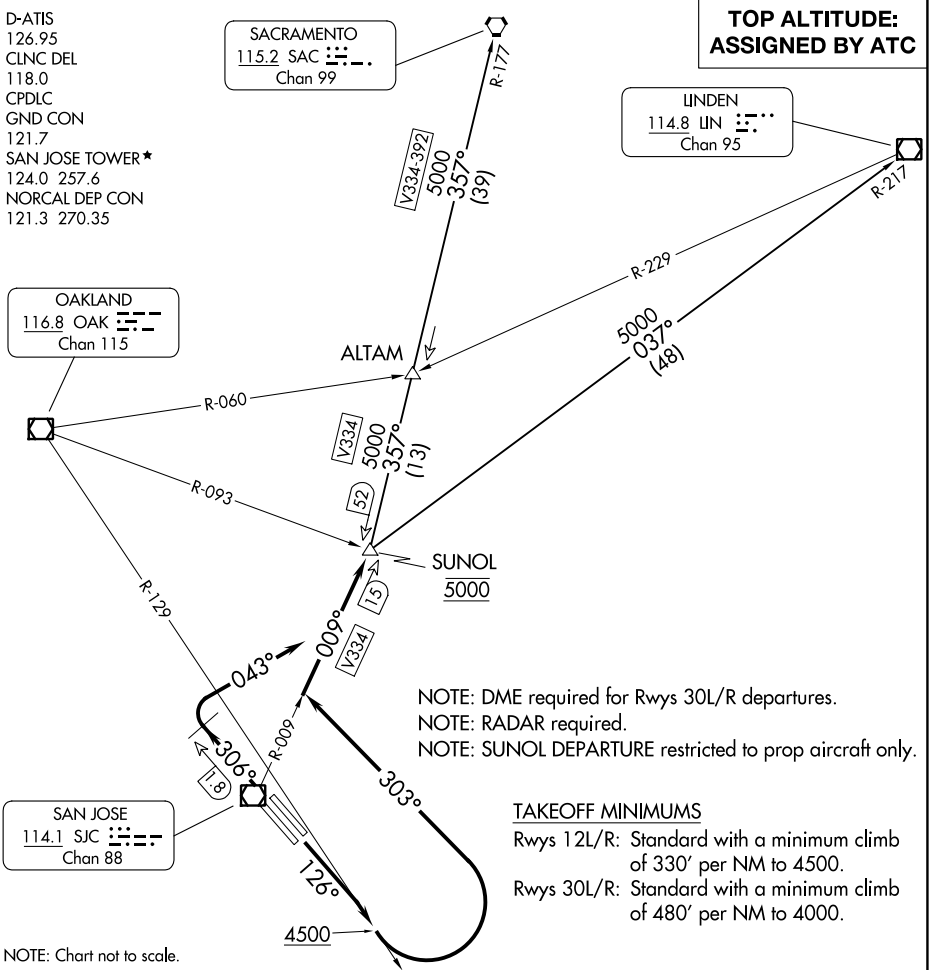
SACRAMENTO
115.2 SAC
Chan 99

**TOP ALTITUDE:
ASSIGNED BY ATC**

LINDEN
114.8 LIN
Chan 95

OAKLAND
116.8 OAK
Chan 115

SAN JOSE
114.1 SJC
Chan 88



NOTE: DME required for Rwy 30L/R departures.
NOTE: RADAR required.
NOTE: SUNOL DEPARTURE restricted to prop aircraft only.

TAKEOFF MINIMUMS

Rwys 12L/R: Standard with a minimum climb of 330' per NM to 4500.
Rwys 30L/R: Standard with a minimum climb of 480' per NM to 4000.

NOTE: Chart not to scale.

DEPARTURE ROUTE DESCRIPTION

TAKEOFF RUNWAYS 12L/R: Climb heading 126° to intercept and proceed on OAK R-129 to 4500, then turn left heading 303° for RADAR vectors to intercept and proceed on SJC R-009 to cross SUNOL at 5000, thence

TAKEOFF RUNWAYS 30L/R: Climb heading 306° at SJC 1.8 DME northwest of SJC VOR/DME, turn right heading 043° to intercept and proceed on SJC R-009 to cross SUNOL at 5000, thence

. . . . then on (transition) or (assigned route). Maintain ATC assigned altitude.

LINDEN TRANSITION (SUNOL1.LIN): From over SUNOL on LIN R-217 to LIN VOR/DME.

SACRAMENTO TRANSITION (SUNOL1.SAC): From over SUNOL on SAC R-177 to SAC VORTAC.

SUNOL ONE DEPARTURE