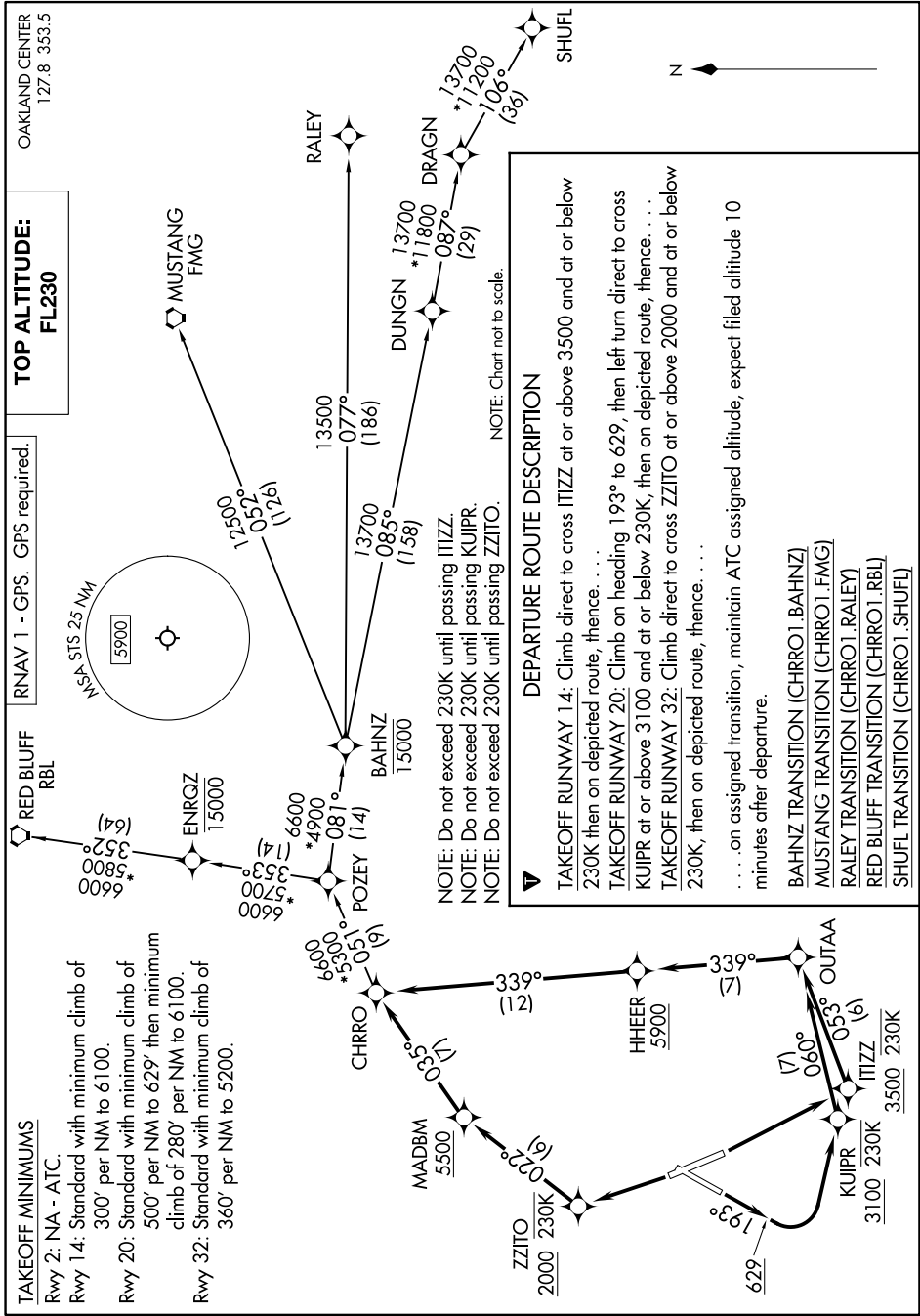


CHRRO ONE DEPARTURE (RNAV)

SW-2, 26 DEC 2024 to 23 JAN 2025



TAKEOFF MINIMUMS
 Rwy 2: NA - ATC.
 Rwy 14: Standard with minimum climb of 300' per NM to 6100.
 Rwy 20: Standard with minimum climb of 500' per NM to 629' then minimum climb of 280' per NM to 6100.
 Rwy 32: Standard with minimum climb of 360' per NM to 5200.

CHRRO ONE DEPARTURE (RNAV)

SW-2, 26 DEC 2024 to 23 JAN 2025