

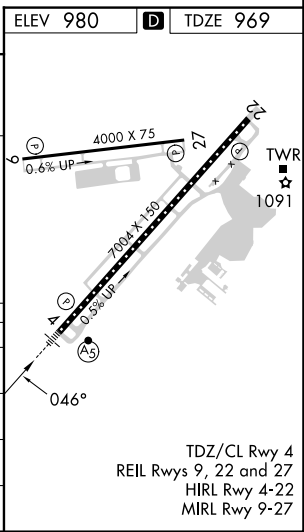
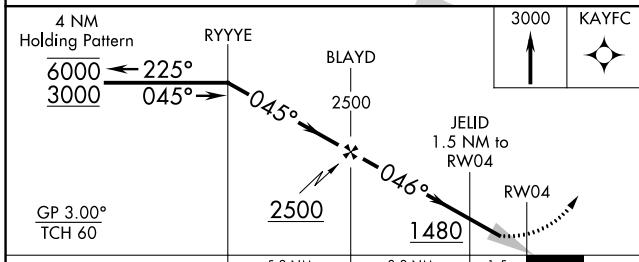
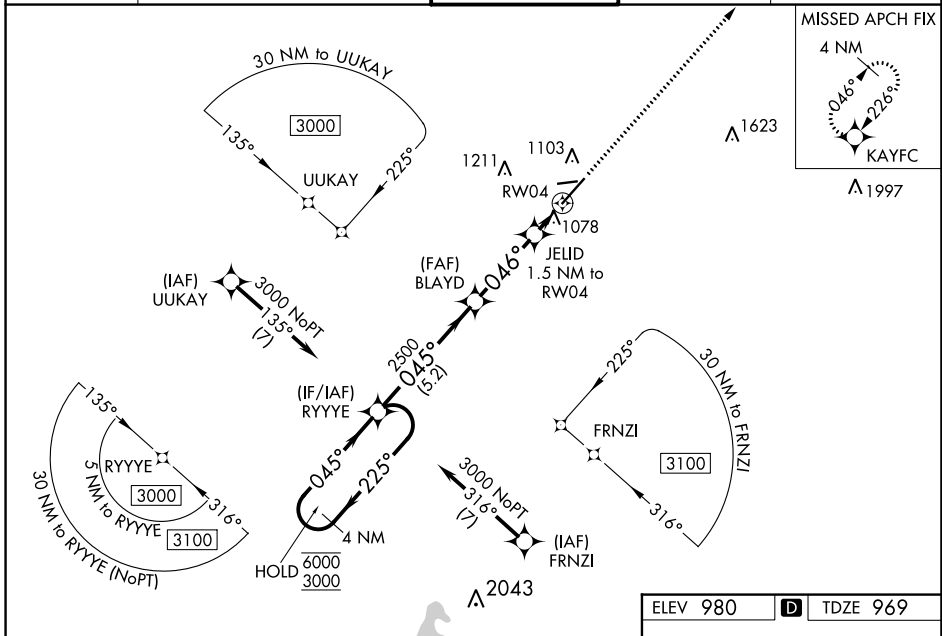
WAAS CH 70401 W04A	APP CRS 046°	Rwy Idg TDZE Apt Elev	6604 969 980
--	------------------------	-----------------------------	---

RNAV (GPS) RWY 4

BLUE GRASS (LEX)

RNP APCH - GPS.	MALSR	MISSED APPROACH: Climb to 3000 direct KAYFC and hold.
<p>⚠ For uncompensated Baro-VNAV systems, LNAV/VNAV NA below -13°C or above 54°C. For inop ALS, increase LNAV/VNAV all Cats visibility to RVR 5500, and LNAV all Cats visibility to RVR 5500.</p>		

ATIS 126.3	LEXINGTON APP CON 120.15 259.3 (040°-220°) 120.75 298.9 (221°-039°)	LEXINGTON TOWER 119.1 257.8	GND CON 121.9	CLNC DEL 132.35
----------------------	---	---------------------------------------	-------------------------	---------------------------



CATEGORY	A	B	C	D
LPV DA		1169/18	200 (200-½)	
LNAV/VNAV DA		1340/35	371 (400-¾)	
LNAV MDA	1340/24	371 (400-½)	1340/35	371 (400-¾)
C CIRCLING	1420-1 440 (500-1)	1440-1 460 (500-1)	1520-1½ 540 (600-1½)	1600-2 620 (700-2)

SE-1, 26 DEC 2024 to 23 JAN 2025

SE-1, 26 DEC 2024 to 23 JAN 2025