

VALPARAISO, FLORIDA

RNAV (GPS) Y RWY 18

WAAS CH 89520 W18A	APCH CRS 184°	Rwy ldg TDZE Arprt Elev	8025 195 195
--------------------------	------------------	-------------------------------	--------------------

(USAF)

DUKE FIELD (EGLIN AF AUX NR 3) (KEGI)

RNP APCH-GPS	ALSIF-1
* When ALS inop, increase RVR to 40, vis to 3/4 mile. ** When ALS inop, increase CAT A RVR to 40, vis to 3/4 mile; CAT BCDE RVR to 45, vis to 7/8 mile.	

MISSED APPROACH: Climb to 3000 direct WUTAR and hold.

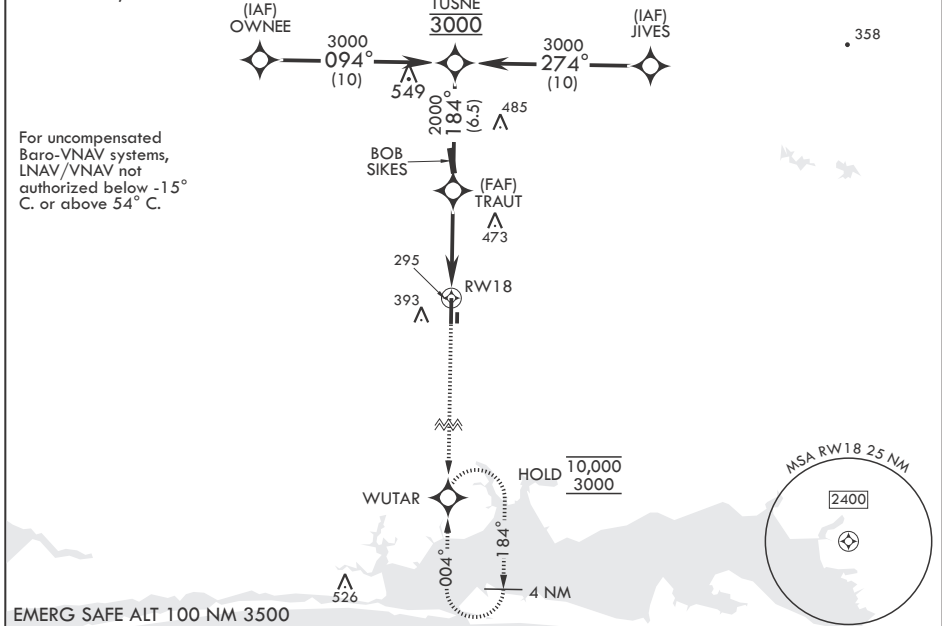
ATIS★ 244.575

APP CON
125.1 281.45 271°-089°
132.1 360.6 090°-270°

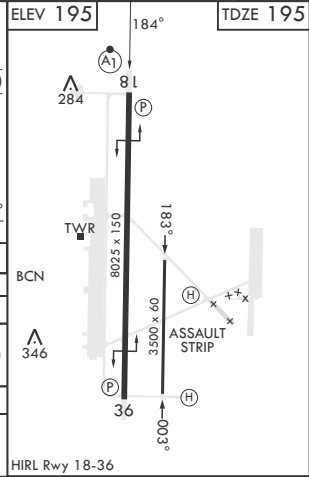
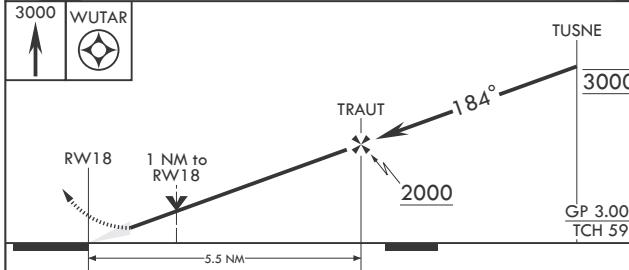
TOWER★ 133.2 290.425

GND CON 123.25 251.125

*** When ALS inop, increase RVR to 55, vis to 1 mile.



EMERG SAFE ALT 100 NM 3500



CATEGORY	A	B	C	D	E
LPV DA*	395/24		200	(200-½)	
LNAV/VNAV DA**	449/24 254 (300-½)	460/24 265 (300-½)	468/24 273 (300-½)	479/24	284 (300-½)
LNAV MDA***	560/24	365 (400-½)	560/35	365	(400-%)
CIRCLING	680-1 485 (500-1)	740-1 545 (600-1)	740-1½ 545 (600-1½)	760-2 565 (600-2)	820-2¼ 625 (700-2¼)

VALPARAISO, FLORIDA

30°39'N - 86°31'W

DUKE FIELD (EGLIN AF AUX NR 3) (KEGI)

Orig 26DEC24

RNAV (GPS) Y RWY 18

SE-3, 26 DEC 2024 to 23 JAN 2025

SE-3, 26 DEC 2024 to 23 JAN 2025