

TACAN Z RWY 18

TACAN DWG Chan 2	APCH CRS 183°	Rwy ldg TDZE Arprt Elev 8025 195 195
----------------------------	-------------------------	--------------------------------------------------------------------------

[USAF]

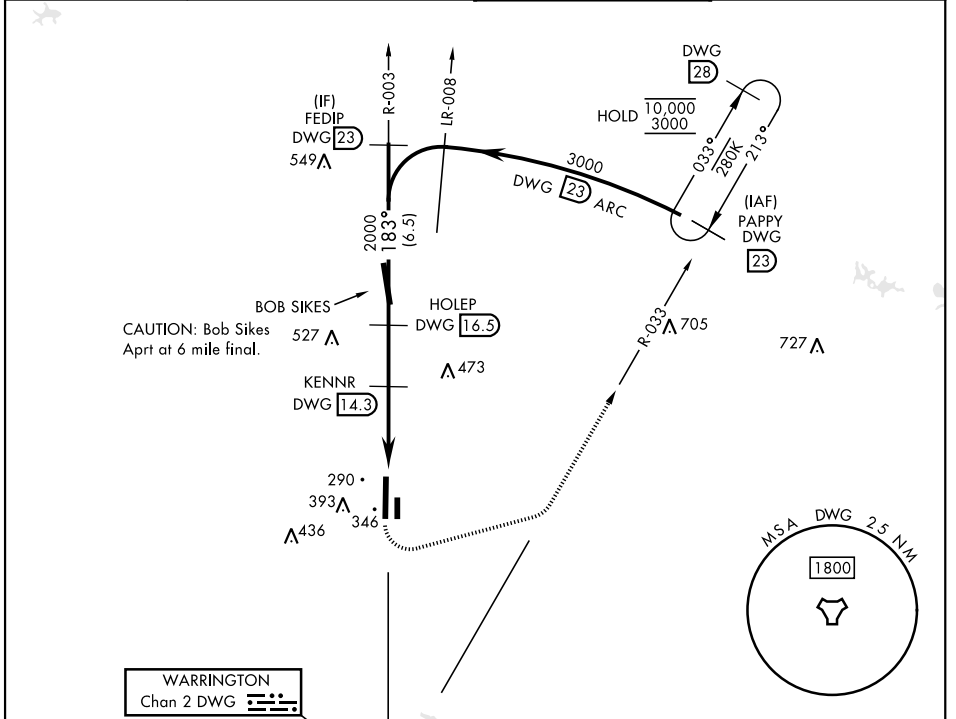
DUKE FLD (EGLIN AF AUX NR 3) (KEGI)

* When ALS inop, increase RVR to 55, vis to 1 mile.

ALSF-1 

MISSED APPROACH: Climb to 800, then climbing left turn to 3000 on heading 078° and DWG TACAN R-033 to PAPPY/23 DME and hold.

ATIS ★ 244.575	EGLIN APP CON 125.1 281.45 (271°-089°) 132.1 360.6 (090°-270°)	TOWER ★ 133.2 290.425	GND CON 123.25 251.125
--------------------------	------------------------------------------------------------------------------------	---------------------------------	----------------------------------

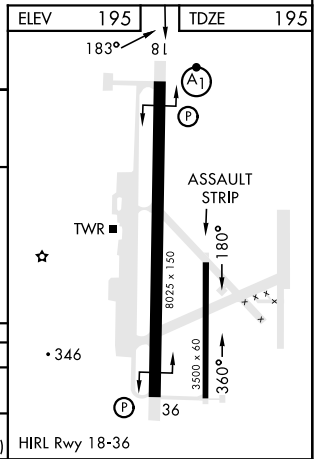
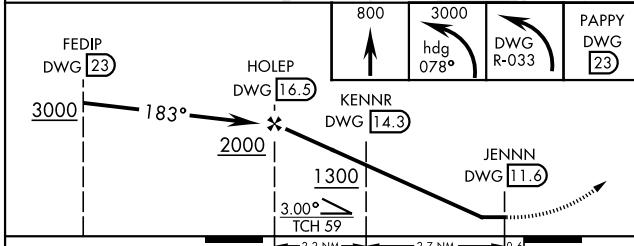


SE-3, 26 DEC 2024 to 23 JAN 2025

SE-3, 26 DEC 2024 to 23 JAN 2025

ELEV 195	TDZE 195
----------	----------

EMERG SAFE ALT 100 NM 3500



CATEGORY	A	B	C	D	E
S-18*	560/24	365 (400-½)	560/35	365 (400-¾)	
CIRCLING	680-1 485 (500-1)	740-1 545 (600-1)	740-1½ 545 (600-1½)	760-2 565 (600-2)	820-2¼ 625 (700-2¼)

TACAN Z RWY 18