

TACAN Z RWY 36

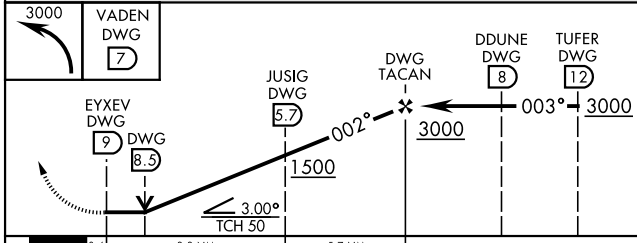
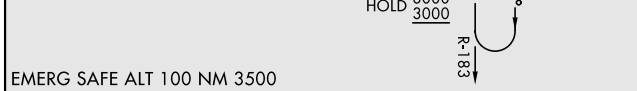
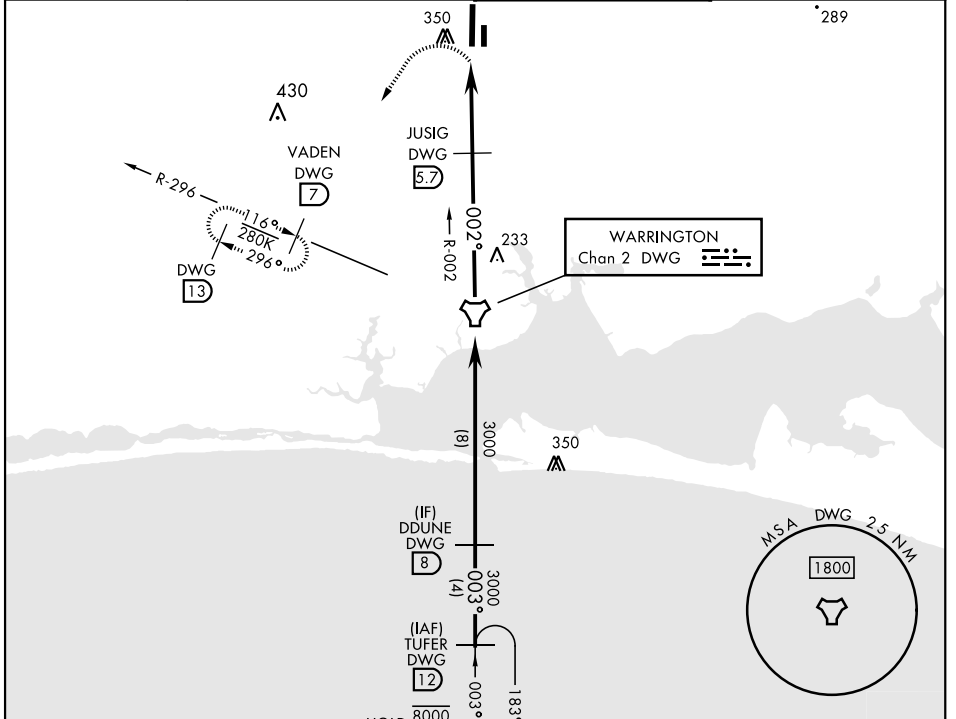
TACAN DWG Chan 2	APCH CRS 002°	Rwy Ldg TDZE 195 Arprt Elev 195
----------------------------	-------------------------	--

[USAF]

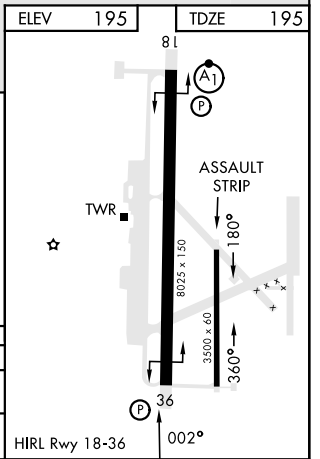
DUKE FLD (EGLIN AF AUX NR 3) (KEGI)

Missed Approach requires use of RNAV or RADAR monitoring. MISSED APPROACH: Climbing left turn to 3000 direct VADEN/DWG TACAN 7 DME and hold, continue climb-in-hold to 3000.

ATIS ★ 244.575	EGLIN APP CON 125.1 281.45 (271°-089°) 132.1 360.6 (090°-270°)	TOWER ★ 133.2 290.425	GND CON 123.25 251.125
--------------------------	--	---------------------------------	----------------------------------



CATEGORY	A	B	C	D	E
S-36	600/55	405 (500-1)	600/60	405	(500-1½)
CIRCLING	680-1 485 (500-1)	740-1 545 (600-1)	740-1½ 545 (600-1½)	760-2 565 (600-2)	820-2¼ 625 (700-2¼)



TACAN Z RWY 36

SE-3, 26 DEC 2024 to 23 JAN 2025

SE-3, 26 DEC 2024 to 23 JAN 2025