

WAAS CH 70405 W18A	APP CRS 185°	Rwy Idg TDZE Apt Elev	6499 813 813
--	------------------------	-----------------------------	---

RNAV (GPS) RWY 18

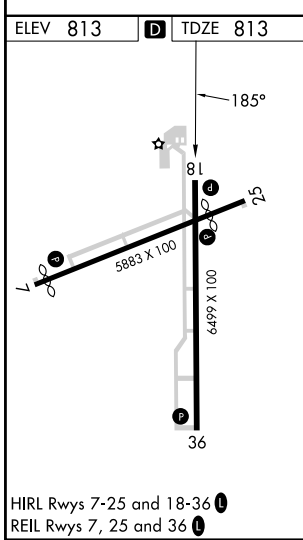
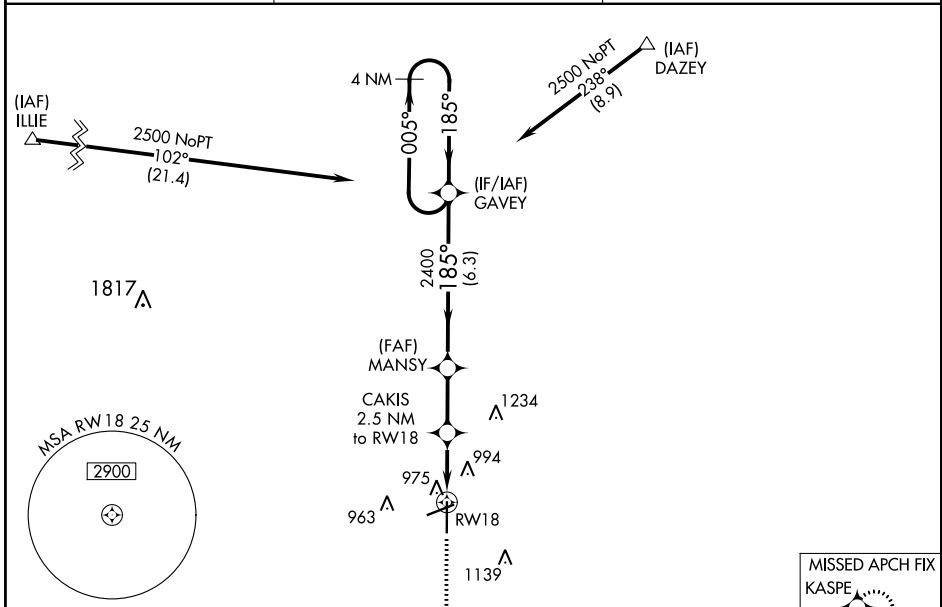
FINDLAY (F'DY)

RNP APCH-GPS.

⚠ For uncompensated Baro-VNAV systems, LNAV/VNAV NA below -16°C or above 47°C. Baro-VNAV and VDP NA when using Lima Allen County altimeter setting. When local altimeter setting not received, use Lima Allen County altimeter setting; increase all DAs/MDAs 80 feet; increase LNAV Cat C/D and Circling Cat C/D visibility ¼ SM. Circling Rwy 7 NA at night.

MISSED APPROACH: Climb to 2600 direct KASPE and hold.

ASOS 132.85	TOLEDO APP CON 120.8 317.55	UNICOM 122.725 (CTAF) 0
-----------------------	---------------------------------------	-----------------------------------



ELEV 813	D	TDZE 813																									
<table border="1"> <tr> <td>CATEGORY</td> <td>A</td> <td>B</td> <td>C</td> <td>D</td> </tr> <tr> <td>LPV DA</td> <td colspan="4">1063-1 250 (300-1)</td> </tr> <tr> <td>LNAV/VNAV DA</td> <td colspan="4">1320-1¾ 507 (600-1¾)</td> </tr> <tr> <td>LNAV MDA</td> <td>1300-1</td> <td>487 (500-1)</td> <td>1300-1⅜ 487 (500-1⅜)</td> <td>1300-1½ 487 (500-1½)</td> </tr> <tr> <td>CIRCLING</td> <td>1440-1</td> <td>627 (700-1)</td> <td>1440-1¾ 627 (700-1¾)</td> <td>1540-2¼ 727 (800-2¼)</td> </tr> </table>			CATEGORY	A	B	C	D	LPV DA	1063-1 250 (300-1)				LNAV/VNAV DA	1320-1¾ 507 (600-1¾)				LNAV MDA	1300-1	487 (500-1)	1300-1⅜ 487 (500-1⅜)	1300-1½ 487 (500-1½)	CIRCLING	1440-1	627 (700-1)	1440-1¾ 627 (700-1¾)	1540-2¼ 727 (800-2¼)
CATEGORY	A	B	C	D																							
LPV DA	1063-1 250 (300-1)																										
LNAV/VNAV DA	1320-1¾ 507 (600-1¾)																										
LNAV MDA	1300-1	487 (500-1)	1300-1⅜ 487 (500-1⅜)	1300-1½ 487 (500-1½)																							
CIRCLING	1440-1	627 (700-1)	1440-1¾ 627 (700-1¾)	1540-2¼ 727 (800-2¼)																							

EC-2, 26 DEC 2024 to 23 JAN 2025

EC-2, 26 DEC 2024 to 23 JAN 2025