

WAAS CH 56405 W25A	APP CRS 254°	Rwy Idg TDZE Apt Elev	4558 812 813
--	------------------------	-----------------------------	---

RNAV (GPS) RWY 25

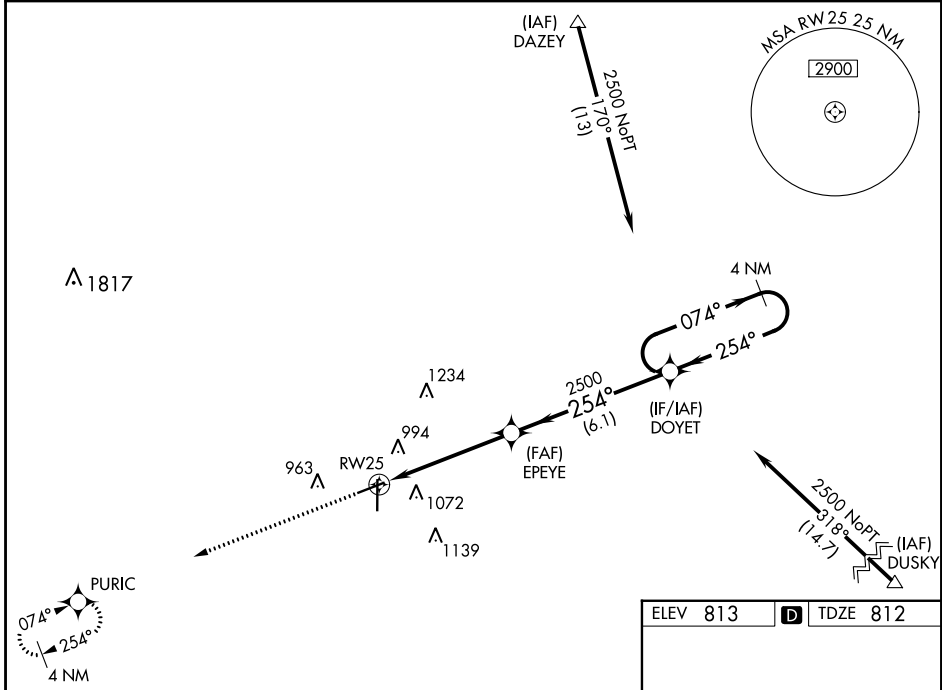
FINDLAY (F'DY)

RNP APCH-GPS.

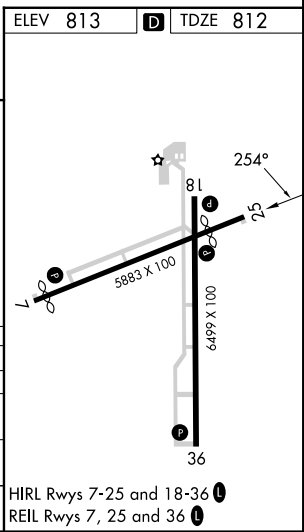
⚠ For uncompensated Baro-VNAV systems, LNAV/VNAV NA below -16°C or above 47°C. Baro-VNAV and VDP NA when using Lima Allen County altimeter setting. When local altimeter setting not received, use Lima Allen County altimeter setting: increase all DAs/MDAs 80 feet; increase LPV visibility 1/8 SM all Cats; increase LNAV Cat C/D and Circling Cat C/D visibility 1/4 SM. Circling Rwy 7 NA at night.

MISSED APPROACH: Climb to 2500 direct PURIC and hold.

ASOS 132.85	TOLEDO APP CON 120.8 317.55	UNICOM 122.725 (CTAF) 0
-----------------------	---------------------------------------	-----------------------------------



2500	PURIC	VGSI and RNAV glidepath not coincident (VGSI Angle 3.00/TCH 31).		4 NM Holding Pattern
↑	✦			
*LNAV only		EPEYE	DOYET	
*1.4 NM to RW25		2500	2500	2500
RW25		254°	074°	254°
1.4 NM		3.7 NM	6.1 NM	GP 3.00° TCH 45
CATEGORY	A	B	C	D
LPV DA	1116-1		304 (400-1)	
LNAV/VNAV DA	1411-2		599 (600-2)	
LNAV MDA	1280-1	468 (500-1)	1280-1½ 468 (500-1½)	1280-1½ 468 (500-1½)
CIRCLING	1440-1	627 (700-1)	1440-1¾ 627 (700-1¾)	1540-2¼ 727 (800-2¼)



EC-2, 26 DEC 2024 to 23 JAN 2025

EC-2, 26 DEC 2024 to 23 JAN 2025

HIRL Rwys 7-25 and 18-36 0
REIL Rwys 7, 25 and 36 0