

REDSTONE ARSENAL, ALABAMA

# RNAV (GPS) RWY 17

|                          |                  |                              |                    |
|--------------------------|------------------|------------------------------|--------------------|
| WAAS<br>CH 45638<br>W17A | APCH CRS<br>173° | Rwy ldg<br>TDZE<br>Arpt Elev | 7300<br>685<br>685 |
|--------------------------|------------------|------------------------------|--------------------|

AL-703 (USA)

REDSTONE AAF (KHUA)

RNP APCH - GPS



MISSED APPROACH: Climb to 3000 direct FASOV and hold.

\* When ALS inop, increase CAT ABCD vis to 1 1/4 miles; increase CAT E vis to 1 1/2 miles.  
 \*\* When ALS inop, increase CAT CDE vis to 1 3/8 miles.

|                |   |                                 |     |
|----------------|---|---------------------------------|-----|
| ATIS<br>120.65 | HUNTSVILLE APP CON/DEP CON<br>125.6 354.1 | TOWER*<br>126.95 (CTAF) 290.275 | PAR |
|----------------|---|---------------------------------|-----|

\*\*\* Circling not authorized E of Rwy 17-35.

Visibility reduction by helicopters below 1 mile not authorized.

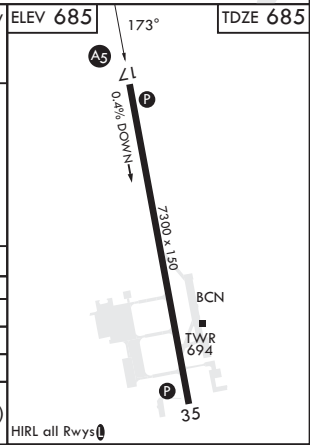
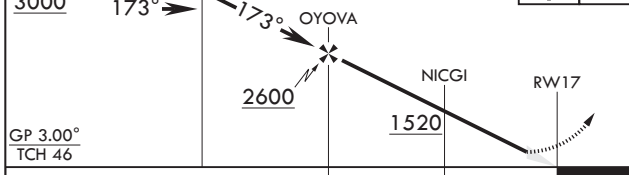
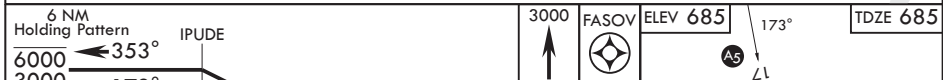
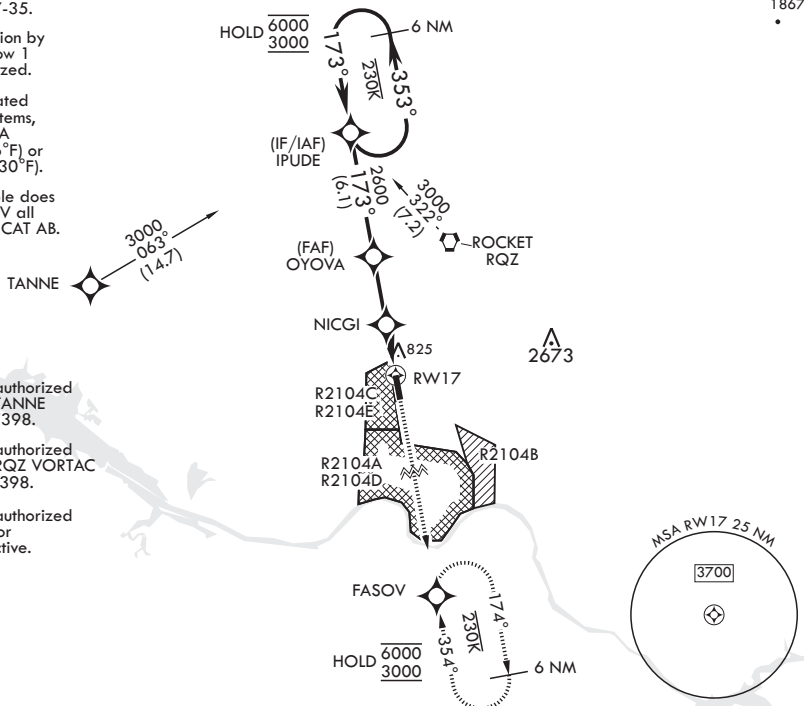
For uncompensated Baro-VNAV systems, LNAV/VNAV NA below -9°C (16°F) or above 54°C (130°F).

Inoperative table does not apply to LPV all CAT and LNAV CAT AB.

Procedure not authorized for arrivals at TANNE westbound on T398.

Procedure not authorized for arrivals at RQZ VORTAC eastbound on T398.

Procedure not authorized when R2104A or R2104C are active.



| CATEGORY             | A                     | B                     | C                                | D                    | E |
|----------------------|-----------------------|-----------------------|----------------------------------|----------------------|---|
| LPV DA               | 935-1                 |                       | 250                              | (300-1)              |   |
| LNAV/VNAV DA*        | 1113-1                |                       | 428                              | (500-1)              |   |
| LNAV MDA**           | 1180-1                |                       | 495                              | (500-1)              |   |
| <b>C</b> CIRCLING*** | 1200-1<br>515 (600-1) | 1240-1<br>555 (600-1) | 1480-2 1/4<br>795<br>(800-2 1/4) | 1740-3 1055 (1100-3) |   |

REDSTONE ARSENAL, ALABAMA

34°41'N - 86°41'W

REDSTONE AAF (KHUA)

Amdt 2 05OCT23

# RNAV (GPS) RWY 17

SE-4, 26 DEC 2024 to 23 JAN 2025

SE-4, 26 DEC 2024 to 23 JAN 2025