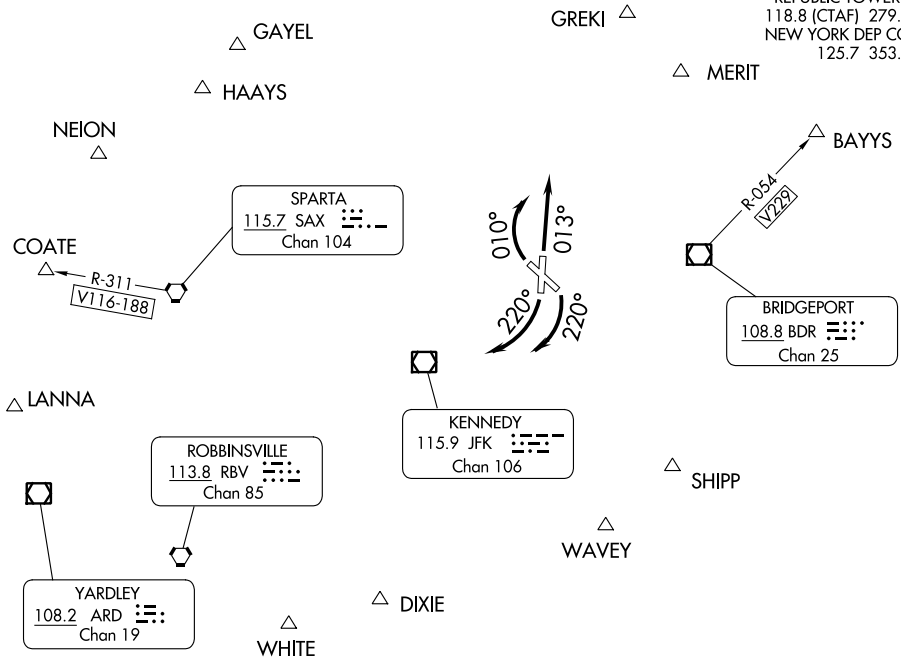


# REPUBLIC ONE DEPARTURE

REPUBLIC (F'R'G)  
FARMINGDALE, NEW YORK

**TOP ALTITUDE:  
3000**

ATIS 126.65  
CLNC DEL 128.25  
GND CON 121.6 269.6  
REPUBLIC TOWER \* 118.8 (CTAF) 279.65  
NEW YORK DEP CON 125.7 353.75



NE-2, 26 DEC 2024 to 23 JAN 2025

NE-2, 26 DEC 2024 to 23 JAN 2025

NOTE: RADAR required.

**TAKEOFF MINIMUMS:**

Rwy 14, 19: Standard.

Rwy 1: 300-1¼ or standard with minimum climb of 240' per NM to 300, or alternatively, with standard takeoff minimums and a normal 200' per NM climb gradient, takeoff must occur no later than 1900' prior to DER.

Rwy 32: Standard with minimum climb of 240' per NM to 800.

NOTE: Chart not to scale.



## DEPARTURE ROUTE DESCRIPTION

TAKEOFF RUNWAY 1: Climb heading 013°, thence....

TAKEOFF RUNWAYS 14, 19: Climbing right turn to heading 220°, thence....

TAKEOFF RUNWAY 32: Climbing right turn to heading 010°, thence....

...RADAR vectors to assigned route or depicted fix. Maintain 3000. Expect clearance to filed altitude/flight level 10 minutes after departure.

BAYYS DEPARTURES: RADAR vectors will be provided to BDR VOR/DME R-054 to BAYYS.

COATE DEPARTURES: RADAR vectors will be provided to SAX VORTAC R-311, to COATE.

# REPUBLIC ONE DEPARTURE

FARMINGDALE, NEW YORK  
REPUBLIC (F'R'G)