

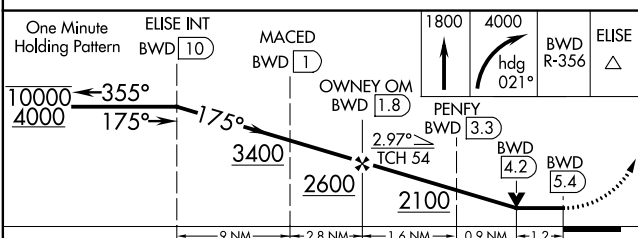
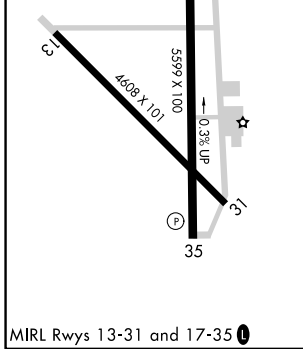
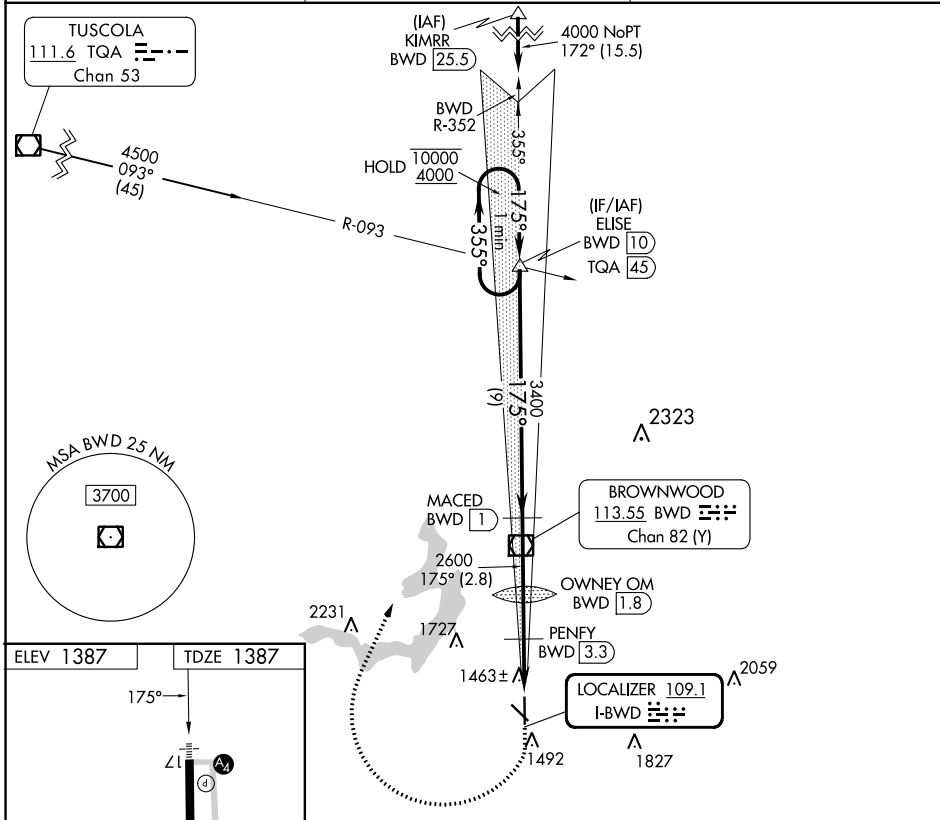
LOC I-BWD 109.1	APP CRS 175°	Rwy Idg 5599
		TDZE 1387
		Apt Elev 1387

LOC RWY 17

BROWNWOOD RGNL (BWD)

DME required. RADAR required for procedure entry at KIMRR.		MALS	MISSED APPROACH: Climb to 1800 then climbing right turn to 4000 on heading 021° and on BWD VOR/DME R-356 to ELISE INT/BWD 10 DME and hold.
Rwy 17 helicopter visibility reduction below 3/4 SM NA. DME from BWD VOR/DME. DME use requires simultaneous reception of I-BWD and BWD DME.			

AWOS-3 118.325	FORT WORTH CENTER 127.45 290.3	UNICOM 122.8 (CTAF)
--------------------------	--	-------------------------------



CATEGORY	A	B	C	D
S-LOC 17		1760-3/4	373 (400-3/4)	
CIRCLING	1820-1 433 (500-1)	1840-1 453 (500-1)	2040-1 3/4 653 (700-1 3/4)	2160-2 1/2 773 (800-2 1/2)

SC-3, 26 DEC 2024 to 23 JAN 2025

SC-3, 26 DEC 2024 to 23 JAN 2025