

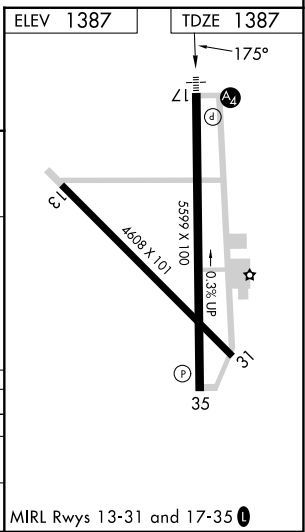
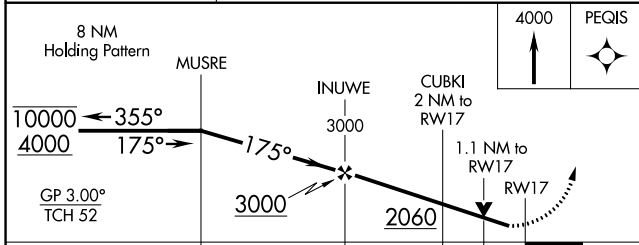
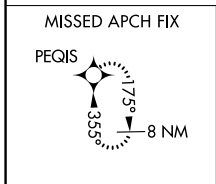
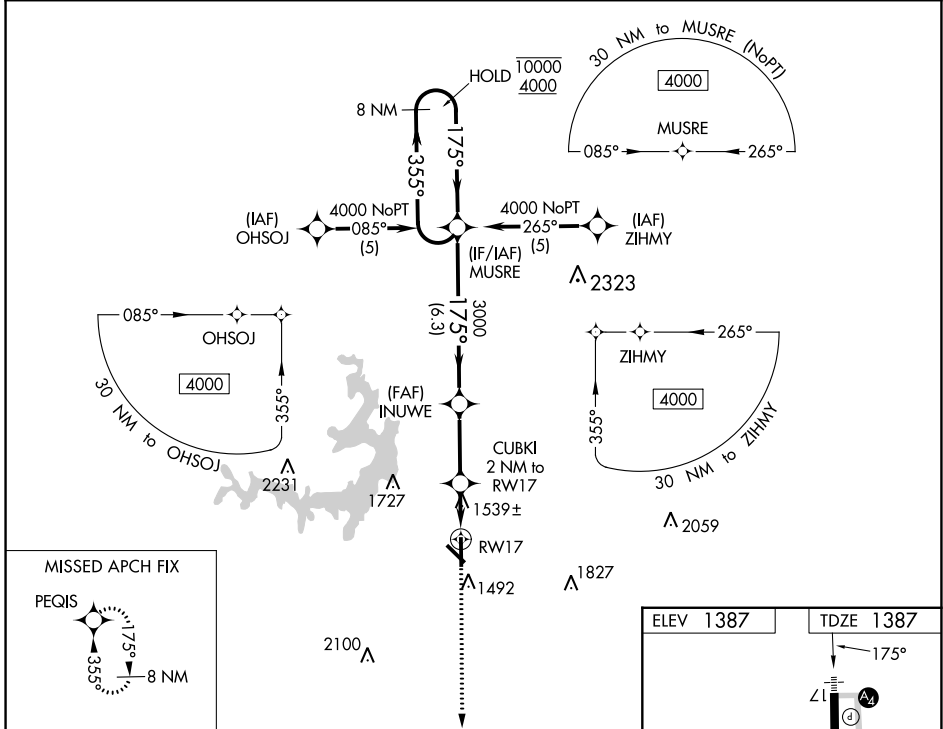
WAAS CH 70325 W17A	APP CRS 175°	Rwy Idg TDZE 1387 Apt Elev 1387	5599 1387 1387
----------------------------------------	------------------------	-----------------------------------------------------	-------------------------------------------

RNAV (GPS) RWY 17

BROWNWOOD RGNL (BWD)

RNP APCH - GPS.	MALS	MISSED APPROACH: Climb to 4000 direct PEQIS and hold.
<p>Rwy 17 helicopter visibility reduction below 3/4 SM NA. For inop ALS, increase LNAV Cats C and D visibility to 1 1/2 SM. Inop table does not apply to LPV all Cats.</p>		

AWOS-3 118.325	FORT WORTH CENTER 127.45 290.3	UNICOM 122.8(CTAF)
--------------------------	------------------------------------------	------------------------------



CATEGORY	A	B	C	D
LPV DA		1637-3/4	250 (300-3/4)	
LNAV MDA	1800-3/4	413 (500-3/4)	1800-1	413 (500-1)
CIRCLING	1820-1 433 (500-1)	1840-1 453 (500-1)	2040-1 1/4 653 (700-1 1/4)	2160-2 1/2 773 (800-2 1/2)

MIRL Rwy 13-31 and 17-35

SC-3, 26 DEC 2024 to 23 JAN 2025

SC-3, 26 DEC 2024 to 23 JAN 2025