

BROWNWOOD, TEXAS

AL-705 (FAA)

24305

VOR/DME BWD	APP CRS	Rwy Idg	5599
113.55	351°	TDZE	1386
Chan 82 (Y)		Apt Elev	1387

VOR RWY 35

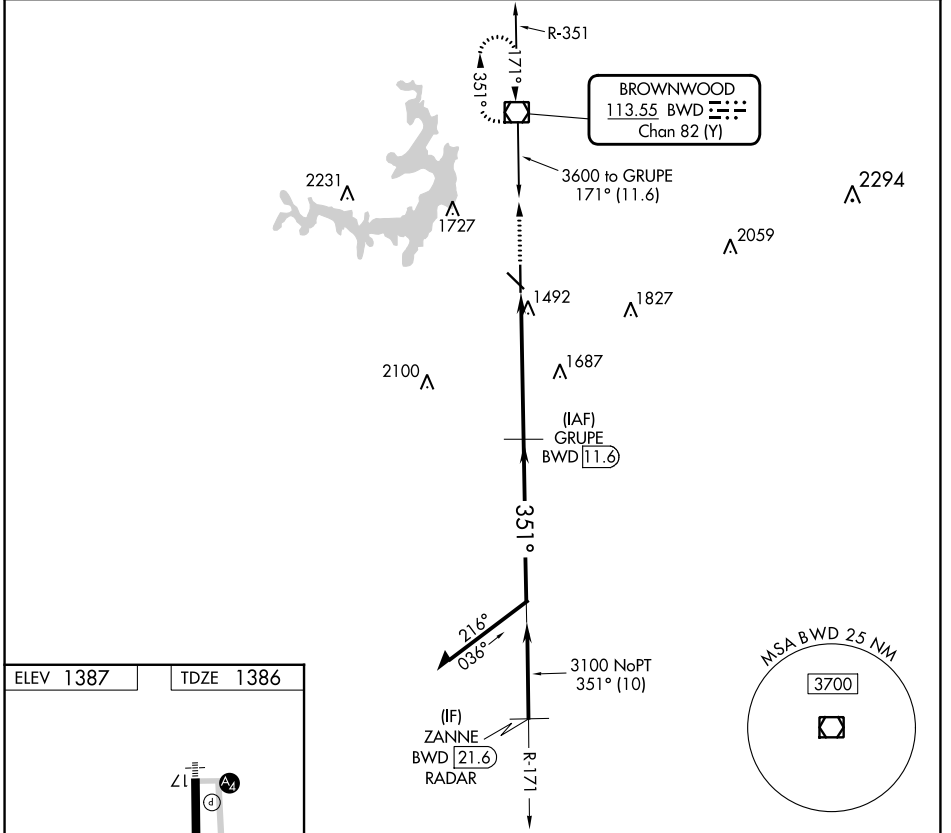
BROWNWOOD RGNL (BWD)

RADAR required for procedure entry. DME required.

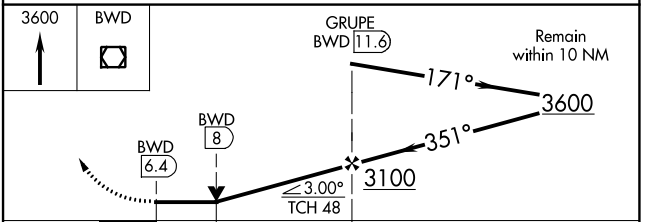
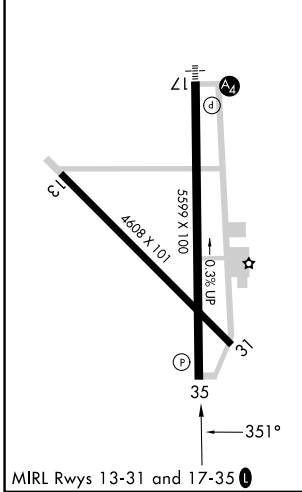
MISSED APPROACH: Climb to 3600 direct BWD VOR/DME and hold, continue climb-in-hold to 3600.

Rwy 35 helicopter visibility reduction below ¼ SM NA.

AWOS-3 118.325	FORT WORTH CENTER 127.45 290.3	UNICOM 122.8 (CTAF) U
--------------------------	--	--



ELEV 1387	TDZE 1386
------------------	------------------



CATEGORY	A	B	C	D
S-35	1940-1	554 (600-1)	1940-1½	554 (600-1½)
CIRCLING	1940-1	553 (600-1)	2040-1¾ 653 (700-1¾)	2160-2½ 773 (800-2½)

BROWNWOOD, TEXAS
Amdt 2 31OCT24

31°48'N-98°57'W

BROWNWOOD RGNL (BWD)

VOR RWY 35

SC-3, 26 DEC 2024 to 23 JAN 2025

SC-3, 26 DEC 2024 to 23 JAN 2025