

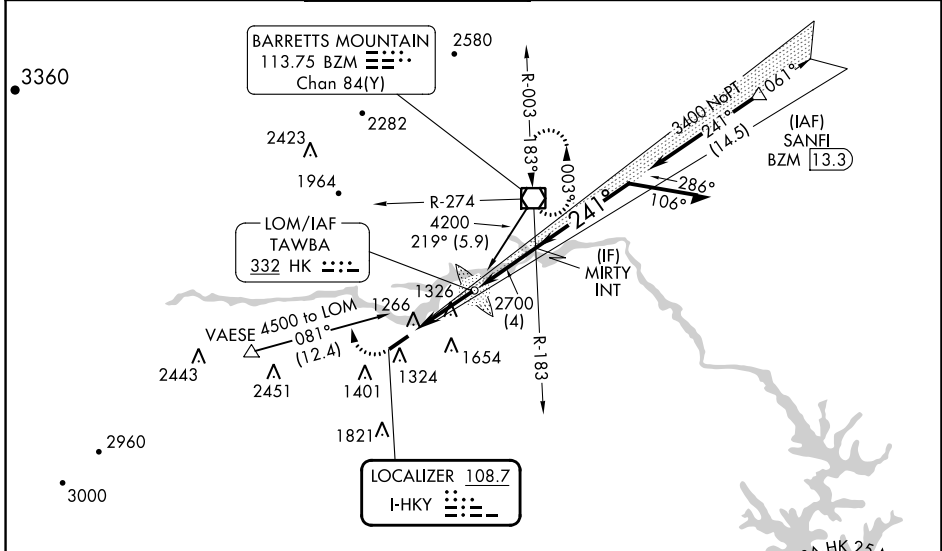
LOC I-HKY <b>108.7</b>	APP CRS <b>241°</b>	Rwy Idg TDZE Apt Elev	<b>6401</b> <b>1190</b> <b>1190</b>
---------------------------	------------------------	-----------------------------	---

# ILS or LOC RWY 24

HICKORY RGNL (HKY)

	For inop ALS, increase S-LOC 24 Cat C and D visibility 1/8 SM.	MALS 	MISSED APPROACH: Climb to 1700 then climbing right turn to 4000 on heading 340° and on BZM VOR/DME R-274 to BZM VOR/DME and hold.
--	--	----------	---

ASOS <b>118.325</b>	ATLANTA CENTER <b>125.15 263.0</b>	HICKORY TOWER ★ <b>128.15 (CTAF) 0</b>	GND CON <b>121.7</b>	CLNC DEL <b>121.7</b>	CLNC DEL <b>124.25</b> (When twr closed)
------------------------	---------------------------------------	---	-------------------------	--------------------------	--



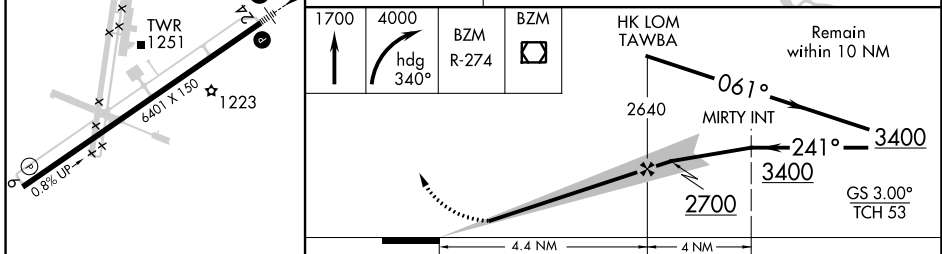
SE-2, 26 DEC 2024 to 23 JAN 2025

SE-2, 26 DEC 2024 to 23 JAN 2025

ELEV 1190	<b>D</b>	TDZE 1190
-----------	----------	-----------

ALTERNATE MISSED APCH FIX

TAWBA HK 332



CATEGORY	A	B	C	D
S-ILS 24	1390-1/2 200 (200-1/2)			
S-LOC 24	1580-1/2	390 (400-1/2)	1580-5/8	390 (400-3/8)
<b>C</b> CIRCLING	1640-1 450 (500-1)	1660-1 470 (500-1)	2020-2 1/2 830 (900-2 1/2)	2040-2 3/4 850 (900-2 3/4)

HICKORY, NORTH CAROLINA  
Amdt 9 25JAN24

35°44'N-81°23'W

# HICKORY RGNL (HKY)

## ILS or LOC RWY 24