

VOR/DME OWB 108.65 Chan 23 (Y)	APP CRS 005°	Rwy Idg TDZE Apt Elev	8000 401 407
--	------------------------	-----------------------------	---

VOR RWY 36

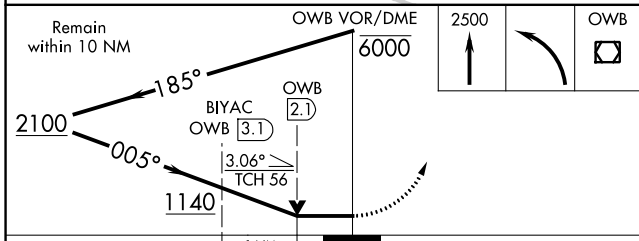
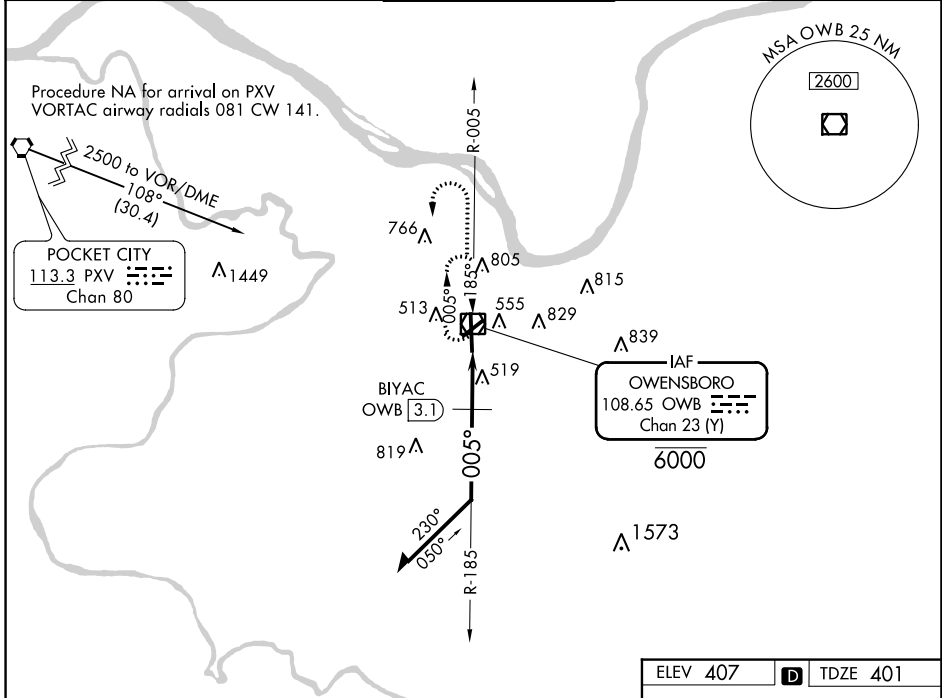
OWENSBORO/DAVIESS COUNTY RGNL (OWB)

⚠ For inop ALS, increase S-36 Cat C and D visibility to 2 SM and BIYAC fix minimums S-36 Cat C and D visibility to 1½ SM.

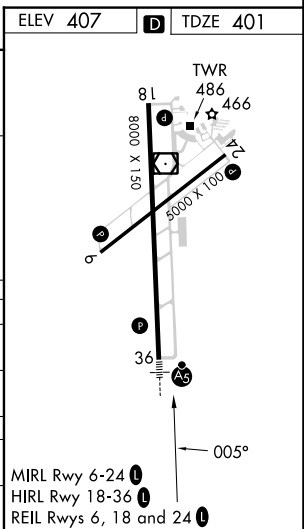
MALSR

MISSED APPROACH: Climb to 2500 then left turn direct OWB VOR/DME and hold.

AWOS-3PT 119.025	EVANSVILLE APP CON * 124.025 290.9	OWENSBORO TOWER * 120.7 (CTAF) 251.15	GND CON 121.7	UNICOM 122.95
----------------------------	--	--	-------------------------	-------------------------



CATEGORY	A	B	C	D
S-36	1140-½	739 (800-½)	1140-1⅝	739 (800-1⅝)
C CIRCLING	1140-1	733 (800-1)	1140-2	1140-2¼
			733 (800-2)	733 (800-2¼)
BIYAC FIX MINIMUMS				
S-36	820-½	419 (500-½)	820-¾	419 (500-¾)
C CIRCLING	860-1	1120-1	1140-2	1140-2¼
	453 (500-1)	713 (800-1)	733 (800-2)	733 (800-2¼)



VOR RWY 36

SE-1, 26 DEC 2024 to 23 JAN 2025

SE-1, 26 DEC 2024 to 23 JAN 2025