

WAAS CH <b>70627</b> <b>W12A</b>	APP CRS <b>120°</b>	Rwy Idg TDZE Apt Elev	<b>6799</b> <b>680</b> <b>682</b>
--	------------------------	-----------------------------	---

# RNAV (GPS) RWY 12

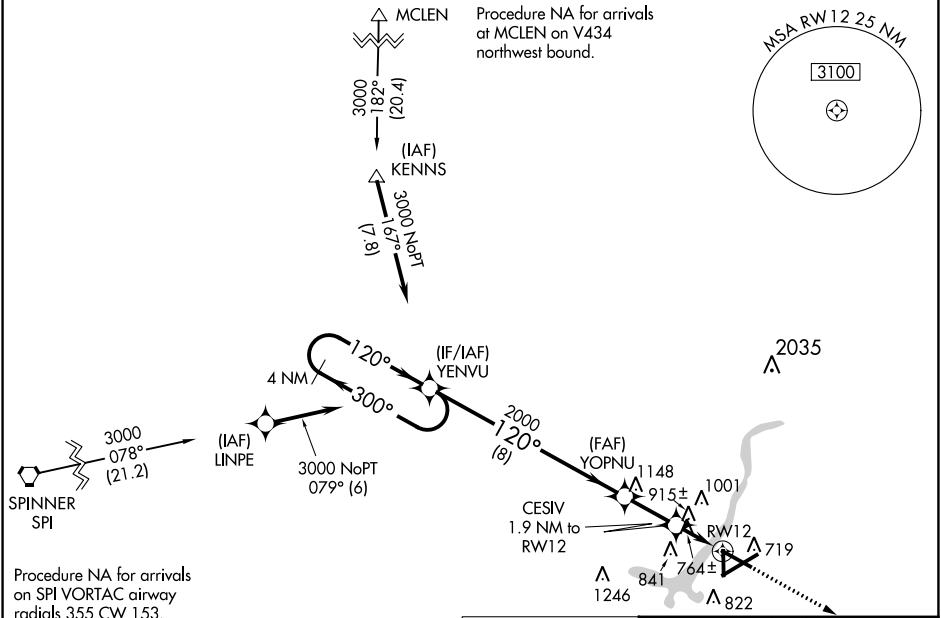
DECATUR (DEC)

RNP APCH - GPS.

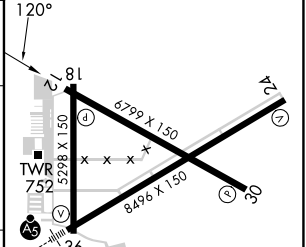
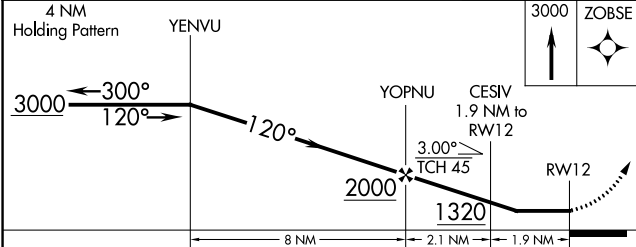
**⚠** Procedure NA at night. Rwy 12 helicopter visibility reduction below 3/4 SM NA. When local altimeter setting not received, use Lincoln altimeter setting and increase all MDA 80 feet, increase LP Cat C and D visibility 1/4 SM, LNAV Cat C and D visibility 3/8 SM, and Circling Cat C and D visibility 1/4 SM.

**MISSED APPROACH:**  
Climb to 3000 direct ZOBSE and hold.

ATIS <b>126.35</b>	CHAMPAIGN APP CON* <b>132.85 290.225</b>	DECATUR TOWER* <b>118.9 (CTAF) 291.775</b>	GND CON <b>121.75 291.775</b>	UNICOM <b>122.95</b>
-----------------------	---	---	----------------------------------	-------------------------



MISSED APCH FIX	ELEV 682	TDZE 680
-----------------	----------	----------



CATEGORY	A	B	C	D
LP MDA	1020-1 340 (400-1)			
LNAV MDA	1180-1	500 (500-1)	1180-1 3/8	500 (500-1 3/8)
CIRCLING	1200-1 518 (600-1)	1240-1 558 (600-1)	1360-2 678 (700-2)	1360-2 1/4 678 (700-2 1/4)

HIRL Rwy 6-24	MIRL Rwy 12-30 and 18-36
---------------	--------------------------

EC-3, 26 DEC 2024 to 23 JAN 2025

EC-3, 26 DEC 2024 to 23 JAN 2025