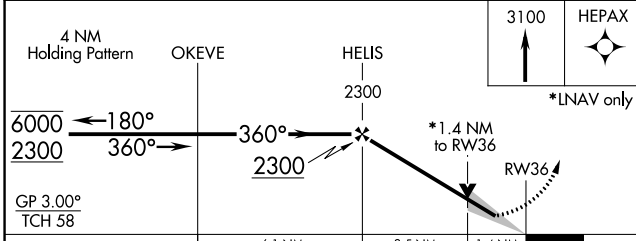
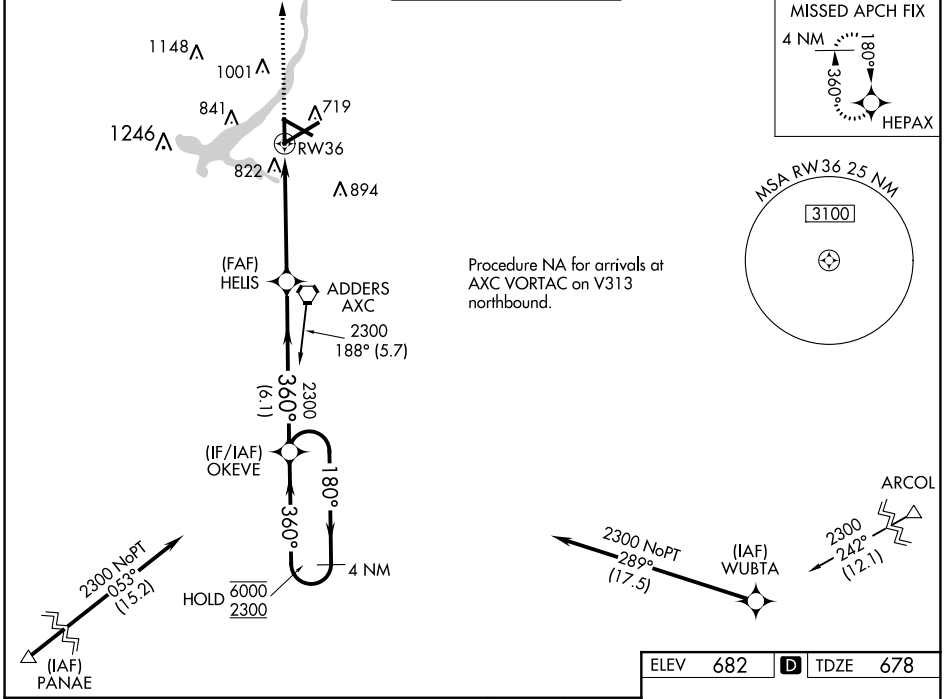


WAAS CH <b>45738</b> <b>W36A</b>	APP CRS <b>360°</b>	Rwy Idg TDZE Apt Elev	<b>5298</b> <b>678</b> <b>682</b>
--	------------------------	-----------------------------	---

# RNAV (GPS) RWY 36

DECATUR (DEC)

RNP APCH		MISSED APPROACH: Climb to 3100 direct HEPAX and hold.	
<p>Baro-VNAV and VDP NA when using Lincoln altimeter setting. For uncompensated Baro-VNAV systems, LNAV/VNAV NA below -19°C or above 54°C. When local altimeter setting not received, use Lincoln altimeter setting and increase all DA/MDA 80 feet, increase LPV all Cats visibility ¼ SM, LNAV/VNAV all Cats visibility ¼ SM, LNAV Cat C/D and Circling Cat C/D visibility ¾ SM.</p>			
ATIS <b>126.35</b>	CHAMPAIGN APP CON* <b>132.85 290.225</b>	DECATUR TOWER* <b>118.9(CTAF) 0 291.775</b>	GND CON <b>121.75 291.775</b>
		UNICOM <b>122.95</b>	



ELEV	682	TDZE	678
------	-----	------	-----

HIRL Rwy 6-24  
MIRL Rws 12-30 and 18-36

CATEGORY	A	B	C	D
LPV DA	984-7/8		306 (400-7/8)	
LNAV/VNAV DA	1082-1 1/8		404 (400-1 1/8)	
LNAV MDA	1180-1	502 (500-1)	1180-1 3/8	502 (500-1 3/8)
CIRCLING	1180-1 498 (500-1)	1240-1 558 (600-1)	1360-2 678 (700-2)	1360-2 1/4 678 (700-2 1/4)

EC-3, 26 DEC 2024 to 23 JAN 2025

EC-3, 26 DEC 2024 to 23 JAN 2025