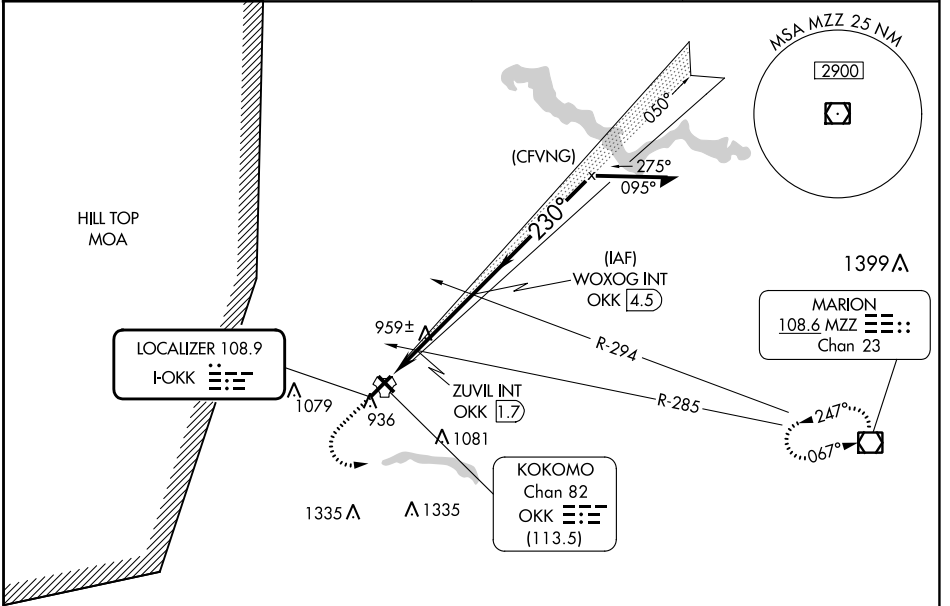


LOC I-OKK 108.9	APP CRS 230°	Rwy ldg TDZE 6001 827	Apt Elev 832
---------------------------	------------------------	---------------------------------	------------------------

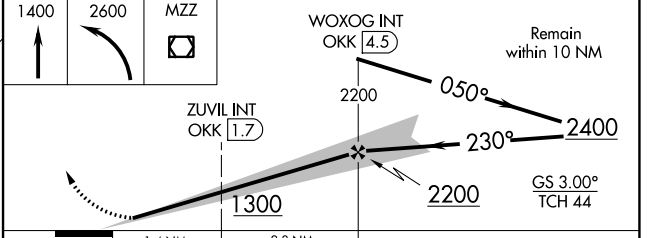
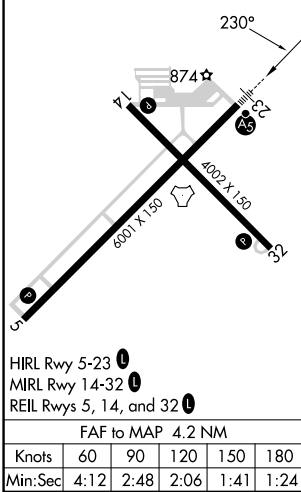
ILS or LOC RWY 23

KOKOMO MUNI (OKK)

RADAR required for procedure entry.		MALSR 	MISSED APPROACH: Climb to 1400 then climbing left turn to 2600 direct MZZ VOR/DME and hold.
▼ For inop ALS, increase S-LOC 23 Cat C/D visibility to 1½ SM. ▲ NA * DME from OKK			
AWOS-3PT 128.675	GRISSOM APP CON* 121.05 338.275	CLNC DEL 120.0	UNICOM 123.0 (CTAF) 0



ELEV 832	TDZE 827
----------	----------



CATEGORY	A	B	C	D
S-ILS 23	1027-½ 200 (200-½)			
S-LOC 23	1300-½	473 (500-½)	1300-1	473 (500-1)
C CIRCLING	1300-1	468 (500-1)	1400-1½ 568 (600-1½)	1420-2 588 (600-2)
ZUVIL FIX MINIMUMS* (DUAL VOR RECEIVERS or DME REQUIRED)				
S-LOC 23	1220-½	393 (400-½)	1220-¾	393 (400-¾)
C CIRCLING	1260-1 428 (500-1)	1300-1 468 (500-1)	1400-1½ 568 (600-1½)	1420-2 588 (600-2)

EC-2, 26 DEC 2024 to 23 JAN 2025

EC-2, 26 DEC 2024 to 23 JAN 2025