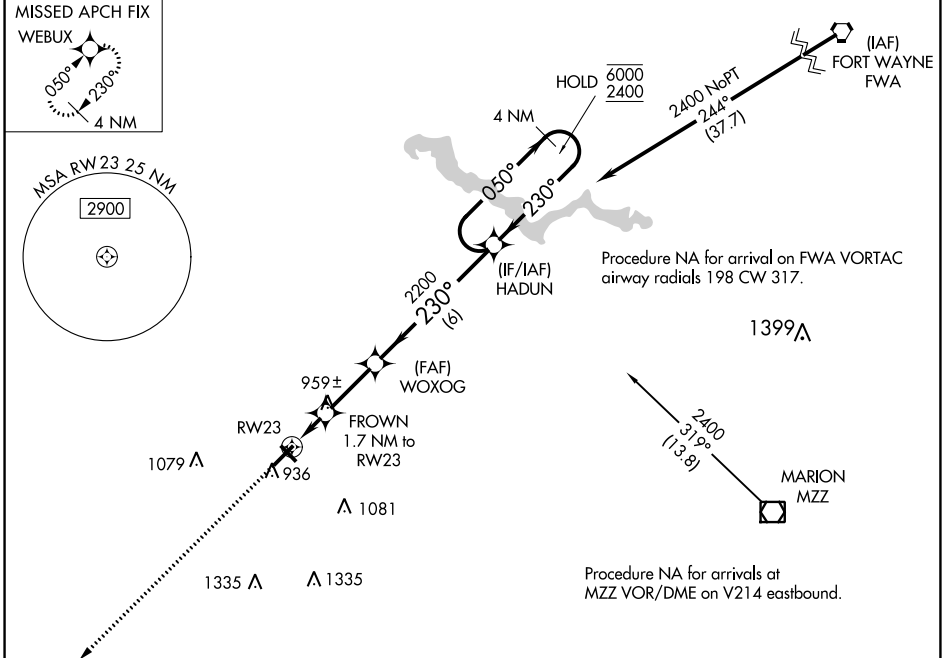


WAAS CH <b>40119</b> <b>W23A</b>	APP CRS <b>230°</b>	Rwy Idg TDZE Apt Elev	<b>6001</b> <b>827</b> <b>832</b>
--	------------------------	-----------------------------	---

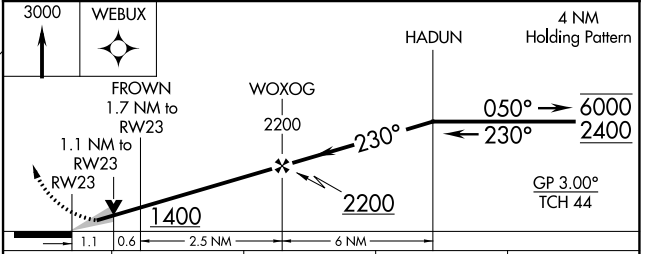
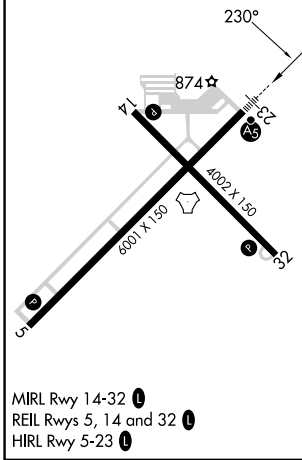
# RNAV (GPS) RWY 23

KOKOMO MUNI (OKK)

RNP APCH - GPS.		MALSR	MISSED APPROACH: Climb to 3000 direct WEBUX and hold.
<p>▼ For uncompensated Baro-VNAV systems, LNAV/VNAV NA below -16°C or above 54°C.</p>			
AWOS-3PT <b>128.675</b>	GRISSOM APP CON * <b>121.05 338.275</b>	CLNC DEL <b>120.0</b>	UNICOM <b>123.0 (CTAF) 0</b>



ELEV 832	TDZE 827
----------	----------



CATEGORY	A	B	C	D
LPV DA		1027-½	200 (200-½)	
LNAV/VNAV DA		1224-⅝	397 (400-⅝)	
LNAV MDA	1220-½	393 (400-½)	1220-⅝	393 (400-⅝)
CIRCLING	1260-1 428 (500-1)	1300-1 468 (500-1)	1400-1½ 568 (600-1½)	1420-2 588 (600-2)

EC-2, 26 DEC 2024 to 23 JAN 2025

EC-2, 26 DEC 2024 to 23 JAN 2025