

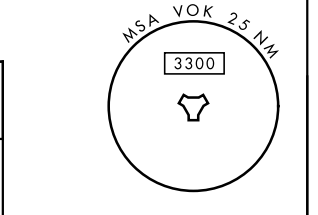
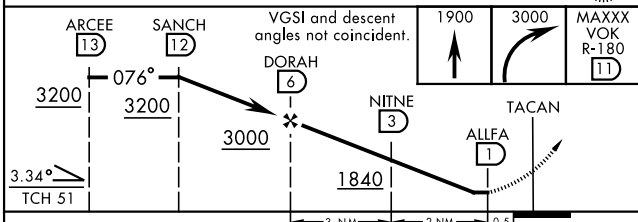
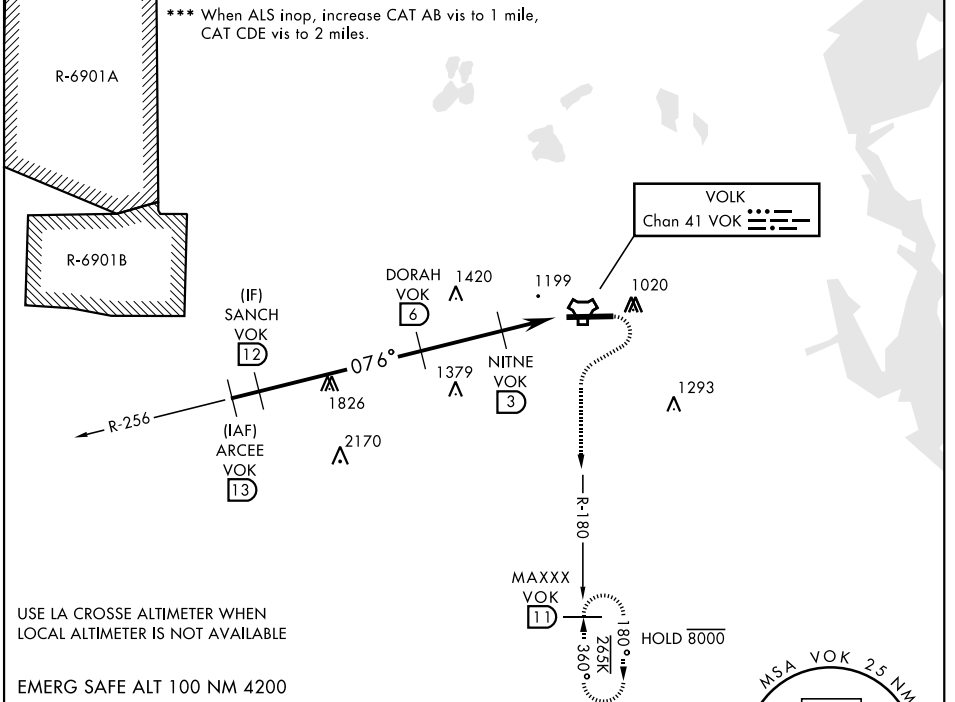
TACAN VOK Chan 41	APCH CRS 076°	Rwy ldg THRE 9000 912 Arpt Elev 912	AL-714 [USAF]	VOLK FLD (KVOK)
----------------------	------------------	---	---------------	-----------------

▼ * When ALS inop, increase CAT AB vis to 1 mile, CAT CDE vis to 1¾ miles.
 ** Circling not authorized South of Rwy 9-27.

MALSR A5

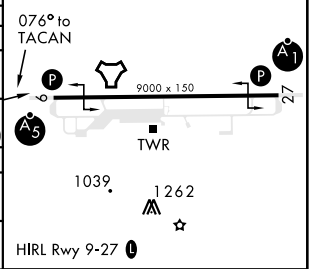
MISSED APPROACH: Climb to 1900, then climbing right turn to 3000 intercept VOK R-180 to MAXXX and hold.

ATIS 134.35 257.85	APP CON 135.25 244.875	TOWER * 127.5 0 (CTAF) 239.25 0	GND CON 121.9 275.8
-----------------------	---------------------------	------------------------------------	------------------------



ELEV 912	THRE 912
----------	----------

CATEGORY	A	B	C	D	E
S-9*	1500-¾ 588 (600-¾)		1500-1¼ 588 (600-1¼)		
CIRCLING**	1500-1 588 (600-1)		1500-1¾ 588 (600-1¾)	1500-2 588 (600-2)	1580-2¼ 668 (700-2¼)
LA CROSSE ALTIMETER SETTING MINIMUMS					
S-9***	1640-¾ 728 (800-¾)		1640-1⅝ 728 (800-1⅝)		
CIRCLING**	1640-1 728 (800-1)		1640-2 728 (800-2)	1640-2¼ 728 (800-2¼)	1720-2¾ 808(900-2¾)



EC-3, 26 DEC 2024 to 23 JAN 2025

EC-3, 26 DEC 2024 to 23 JAN 2025