

WAAS CH <b>42632</b> <b>W35A</b>	APP CRS <b>352°</b>	Rwy Idg TDZE Apt Elev	<b>4809</b> <b>3641</b> <b>3649</b>
--	------------------------	-----------------------------	---

# RNAV (GPS) RWY 35

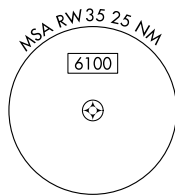
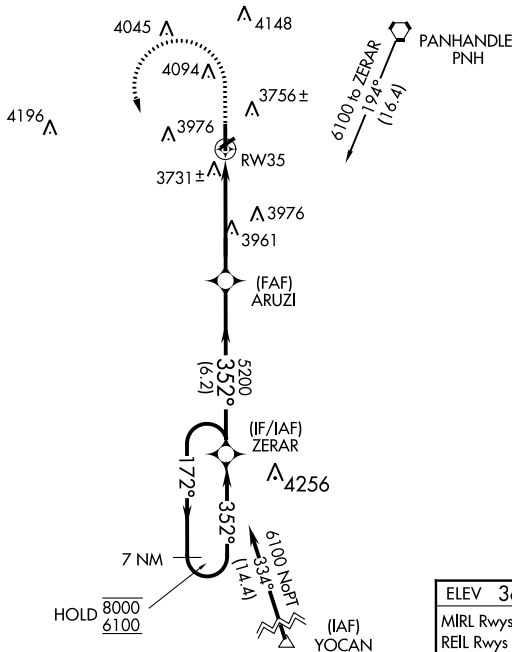
TRADEWIND (TDW)

RNP APCH-GPS.

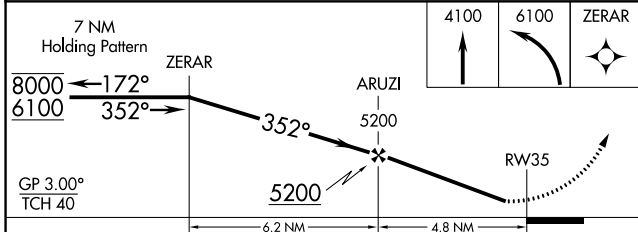
**NA** Procedure NA at night. Rwy 35 helicopter visibility reduction below 1 SM NA. Baro-VNAV NA. Use Rick Husband Amarillo Intl altimeter setting; when not received, use Hereford altimeter setting; increase LPV DA to 3983 feet, LNAV/VNAV DA to 4108 feet, and all MDAs 80 feet, and increase LNAV/VNAV all Cats and Circling Cat B visibility 1/4 SM.

**MISSED APPROACH:** Climb to 4100 then climbing left turn to 6100 direct ZERAR and hold. continue climb-in-hold to 6100.

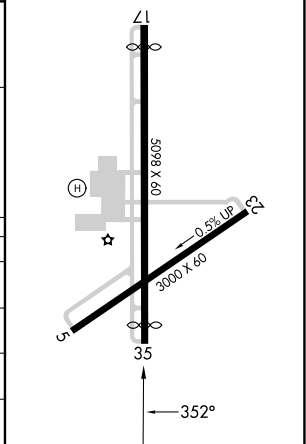
AWOS-AV <b>118.475</b>	AMA ASOS <b>118.85 350.3</b>	AMARILLO APP CON * <b>119.5 307.0</b>	CLNC DEL <b>125.4</b>	UNICOM <b>122.8 (CTAF) 0</b>
---------------------------	---------------------------------	--	--------------------------	---------------------------------



ELEV 3649	TDZE 3641
MRL Rwy 5-23 and 17-35 0	
REIL Rwy 17 and 35 0	



CATEGORY	A	B	C	D
LPV DA	3913-1	272 (300-1)		NA
LNAV/VNAV DA	4038-1 1/8	397 (400-1 1/8)		NA
LNAV MDA	4300-1	659 (700-1)		NA
CIRCLING	4300-1 651 (700-1)	4420-1 771 (800-1)		NA



SC-2, 26 DEC 2024 to 23 JAN 2025

SC-2, 26 DEC 2024 to 23 JAN 2025