


| | | | |
|---------------------------|------------------------|-----------------------------|---|
| LOC I-AZO 110.9 | APP CRS 354° | Rwy Idg TDZE Apt Elev | 6502 868 874 |
|---------------------------|------------------------|-----------------------------|---|

ILS or LOC RWY 35

KALAMAZOO/BATTLE CREEK INTL (AZO)

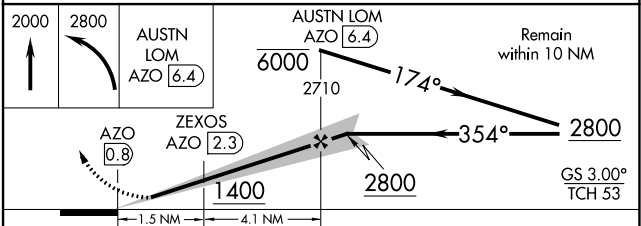
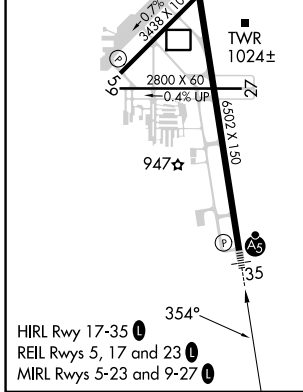
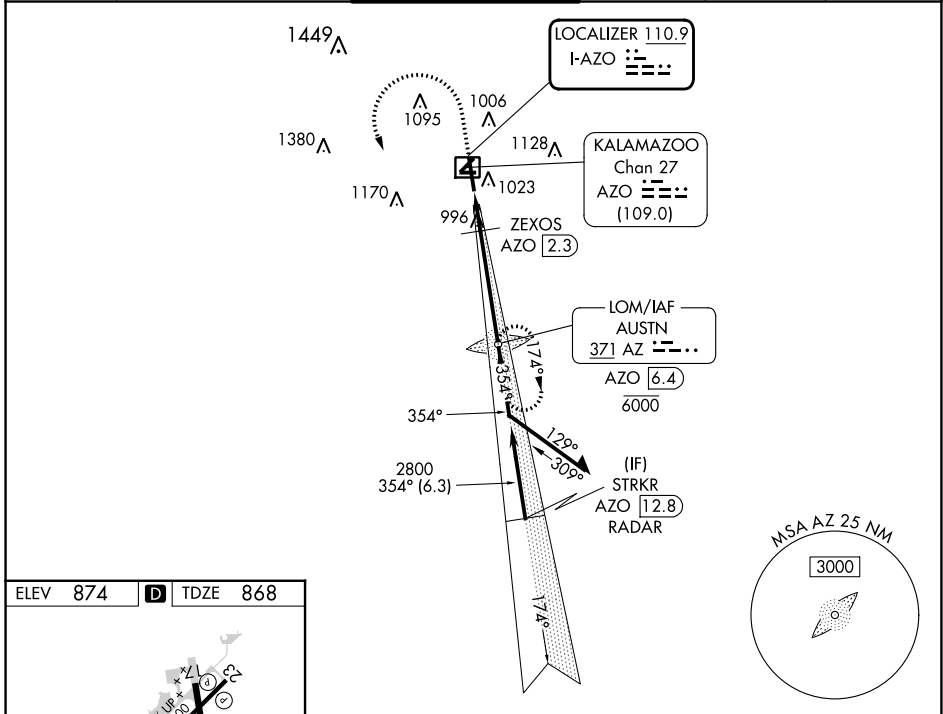
ADF required. DME required for LOC only. RADAR required for procedure entry.

NA DME from AZO DME. DME use requires simultaneous reception of I-AZO and AZO DME. Circling Rwy 5, 9, 23, 27 NA at night. When local altimeter setting not received, use Battle Creek altimeter setting: increase S-ILS 35 DA to 1112 feet; increase all MDAs 60 feet and visibility S-LOC 35 Cat C/D to RVR 4500. * RVR 1800 authorized with use of FD or AP or HUD to DA (NA when using Battle Creek altimeter setting).

MALSR 

MISSED APPROACH: Climb to 2000 then climbing left turn to 2800 direct AUSTN LOM/AZO 6.4 DME and hold.

| | | | | | |
|-----------------------|--|--|-------------------------|---------------------------|-------------------------|
| ATIS 127.25 | GREAT LAKES APP CON * 121.2 239.25 | KALAMAZOO TOWER * 118.3 (CTAF) 0 257.875 | GND CON 121.9 | CLNC DEL 121.75 | UNICOM 122.95 |
|-----------------------|--|--|-------------------------|---------------------------|-------------------------|



| CATEGORY | A | B | C | D |
|-------------------|---------------------|-------------|-------------------------|-----------------------|
| S-ILS 35* | 1068/24 200 (200-½) | | | |
| S-LOC 35 | 1260/24 | 392 (400-½) | 1260/35 | 392 (400-¾) |
| C CIRCLING | 1340-1 | 466 (500-1) | 1480-1¾ 606 (700-1¾) | 1480-2 606 (700-2) |

EC-1, 26 DEC 2024 to 23 JAN 2025

EC-1, 26 DEC 2024 to 23 JAN 2025