

WAAS CH 57933 W17A	APP CRS 174°	Rwy Idg TDZE Apt Elev	6502 867 874
--	------------------------	-----------------------------	---

RNAV (GPS) RWY 17

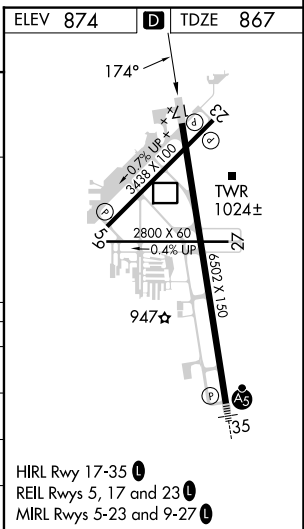
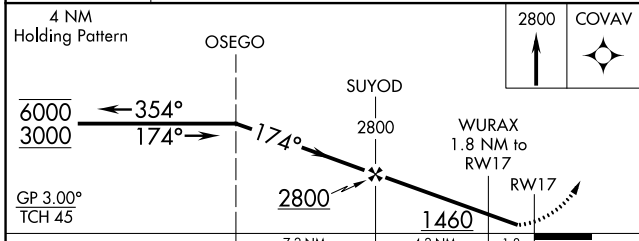
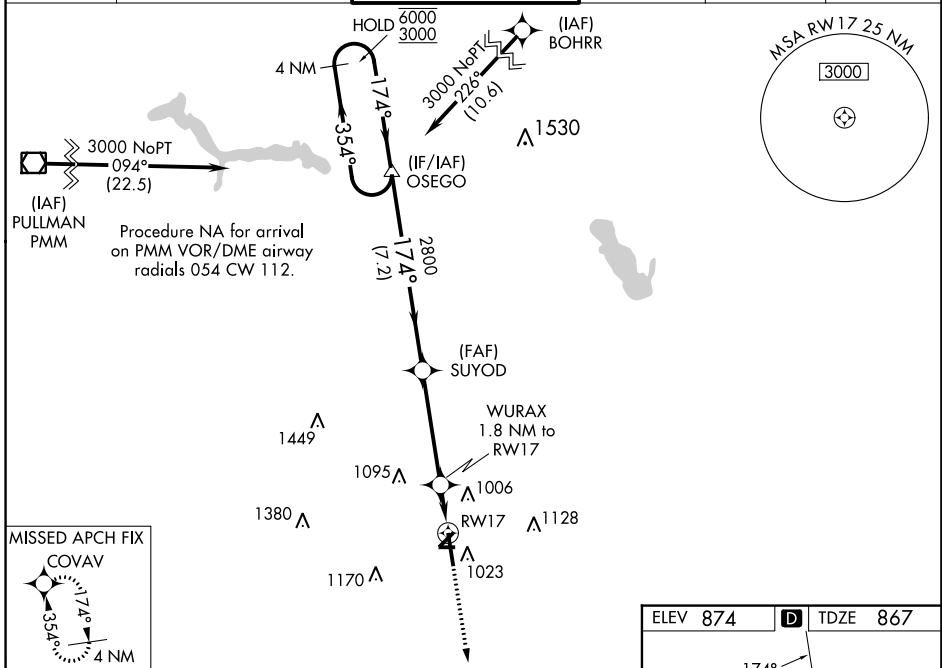
KALAMAZOO/BATTLE CREEK INTL (AZO)

RNP APCH - GPS

⚠ Rwy 17 helicopter visibility reduction below 3/4 SM NA. Baro-VNAV NA when using Battle Creek altimeter setting. For uncompensated Baro-VNAV systems, LNAV/VNAV NA below -20°C or above 54°C. Circling Rwy 5, 9, 23, 27 NA at night. When local altimeter setting not received, use Battle Creek altimeter setting: increase LPV DA to 1200 feet, LNAV/VNAV DA to 1229 feet; increase all MDAs 60 feet.

MISSED APPROACH:
Climb to 2800 direct COVAV and hold.

ATIS 127.25	GREAT LAKES APP CON ★ 121.2 239.25	KALAMAZOO TOWER ★ 118.3 (CTAF) 0 257.875	GND CON 121.9	CLNC DEL 121.75	UNICOM 122.95
-----------------------	--	--	-------------------------	---------------------------	-------------------------



CATEGORY	A	B	C	D
LPV DA		1156-1	289 (300-1)	
LNAV/VNAV DA		1185-1	318 (400-1)	
LNAV MDA	1320-1	453 (500-1)	1320-1 3/8	453 (500-1 3/8)
C CIRCLING	1380-1	506 (600-1)	1480-1 3/4	1480-2
			606 (700-1 3/4)	606 (700-2)

EC-1, 26 DEC 2024 to 23 JAN 2025

EC-1, 26 DEC 2024 to 23 JAN 2025